



0.02mm Chip Precision SMD Mounting Machine HT-F7 Mounting Speed 100000-150000 CPH

Our Product Introduction

Basic Information

- Place of Origin: China
- Brand Name: ETON
- Certification: CE CCC ISO
- Model Number: HT-F7
- Minimum Order Quantity: 1
- Price: US \$85,000-86,000 / Units
- Packaging Details: Standard export package(Wooden case with vacuum package)
- Delivery Time: 15 days
- Payment Terms: T/T
- Supply Ability: 50



Product Specification

- Dimension: 2700*2450*1530 Mm
- Total Weight: 1400 KG
- PCB Length Width: Max :330*1200 Mm
- PCB Thickness: 0.5-5 Mm
- Mounting Height: <15 Mm
- No.of Feeder Station: 68 PCS
- Highlight: **smd assembly machine,
smd led mounting machine**

Product Description

F7: Mounting Module Speed Capacity Reach 150000 CPH For LED Mounting Machine

Product Description

F7: Mounting Module Speed Capacity Reach 150000 CPH For LED Mounting Machine

Features

Double module professional high speed mounter

Apply to the **0.6M,0.9M,1.2M** hard light board and 0.5M, 1M LED soft lamp strip. Producing with **2-4 types of materials** with high capacity, available for board with any proportion of LED chip and resistor. Two mounting part, 17 nozzles for each mounting part, part A or part B can be mounted separately or synchronously.

Correction automatically, high precision, available for RGB

Global first technology patent: counterfeiting not allowed

IPC 9850 Capacity:150000-170000 CPH

Patent number: ZL 2011 2 0237740.9 ZL 20 11 2 0334606.0

ZL 2012 2 0178869.1 ZL 2012 2 0415505.0

ZL 2012 2 0415044.7 ZL 2012 2 0415356.8

ZL 2012 2 0415061.0

Company Information

Company five level management policy: sincere business, focus on R&D, manufacturing intentions, considerate service, customer trust.

"No worries"after sale service concept: the Pearl River Delta region to arrive within 4 hours, day to solve; Guangdong Province 24 hours.

Eton mission: professional, excellent technology, sharing the results.

Eton goal: to create a national brand, build international Chinese enterprise.

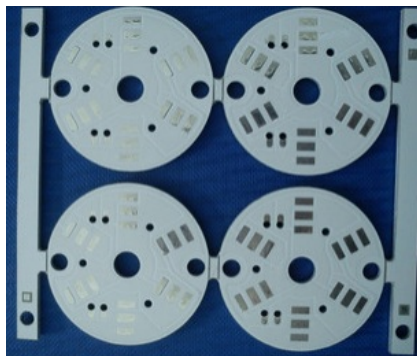
Eton purpose: to create value for customers, creating benefits for society.

Technical Parameter

led bulb assembly machine/smt production line

Dimension	Length	2700MM
	Width	2450MM
	Height	1530MM
	Total Weight	1400 kg
PCB	PCB length width	Max:330*1200 mm Min:330*80 mm
	PCB thickness	0.5~5mm
	PCB Clamping	Adjustable pressure pneumatic.
	Mounting Mode	Group to pick and group to mount
O.S.	system	Windows7
	software	R&D independently
	Display	LED Monitor
	Input Device	Keyboard, Mouse
Feeding system	No. of feeders	68 PCS
	No. of nozzles	34 PCS
	Feeder type	Electronic feeder
	No. of Camera	5 sets of imported camera
		Vision for the flight identification + MARK correction
	Mounting Precision	±0.02mm chip
	Mounting Height	<15mm
	Mounting Speed	100000-150000CPH(optimum)
	Components	LED 3014/3020/3528/5050 and resistor, capacitors, bridge rectifiers.

Vision System	Components Space	0.2mm
	Power	220AC 50HZ
	Power Consumption	5 kw
	Operating Environment	23 ±3
	Conveyor Transmission	Max Length:1200 mm
	Transmission Speed	>500mm/sec
	Transmission Direction	Single(left→right or right→left)
	Transmission Mode	Online drive
	Air pressure	>5.0kg/cm2
	Air consumption	<100 L/min
	Electrical control	Independent research and development by ETON
	Motion control card module 2 sets	Independent research and development by ETON
	X,Y Axes Driving	Servo motor control for X, Y, Z axes.



FAQ

Q: What are your advantages?

Our company stick to five level management policy: sincere business, focus on R&D, manufacturing intentions, considerate service, customer trust.

Q : Is there any quality guarantee?

We stick to quality first, client-oriented, Continuous improvement!

Q: What is SMT Machine?

This is an LED lamp patch machine using surface mount technology.

Q: Whether the machine's after-sale service is guaranteed?

Each of our machines has a one-year warranty and will regularly visit customers for use.

Our Services

Maintenance Period: 1 year.(whole machine, any parts need to be repaired or replaced will be free)

Upgrade the software will be free

Visit customer regularly and gather information.

Provide latest information about technology and equipment.

Packaging & Shipping



We use standard export packing(wooden case with vacuum packing)and deliver the goods at ShenZhen port 15days after payment.

Quality Principle:

**Quality First, Client-oriented,
Continuous Improvement!**

About Exhibition



About our Client



易通自动化

战略合作伙伴 (排名不分先后)
Strategic partner (in no particular order)



If you are interested in our products, please feel free to contact me and I will be happy to answer any questions you have!

How to contact us ?

Company	Shenzhen Eton Automation Equipment Co., Ltd
Address	The 44th Bld.,The 5th.Huaidecuigang Industrial area,Fuyong,Bao'an,Shenzhen,China
Mobile	+86 13652436725
Wechat	+86 13652436725
QQ	1762937684



Shenzhen Eton Automation Equipment Co., Ltd.



0086 13670197725 (Whatsapp/Wechat)



linda@eton-mounter.com



smtmountingmachine.com

HENGFENG INDUSTRIAL AREA,ZHOUSHI ROAD NO. 739,HEZHOU COMMUNITY,HANGCHENG STREET,BAOAN,SHENZHEN,CHINA