



## E6T-1200 Led Chip SMD Mounting Machine To Picking And Separate Placing High Speed

### Our Product Introduction

#### Basic Information

- Place of Origin: China
- Brand Name: ETON
- Certification: CE CCC ISO
- Model Number: HT-E6T
- Minimum Order Quantity: 1
- Price: US \$45000 - 46000 / Unit
- Packaging Details: Standard export package(Wooden case with vacuum package)
- Delivery Time: 30
- Payment Terms: T/T
- Supply Ability: 50



#### Product Specification

- Dimension: 2550\*1650\*1600 MM
- Total Weight: 1200 KG
- PCB Length Width: Max 1200\*350 MM
- Mounting Speed: 30000 CPH
- Power Supply: 220 AC 50 HZ
- No.of Nozzles: Single Module.totally 8
- Highlight: **smd assembly machine,**  
**smd led mounting machine**

## Product Description

### Product Description:

Multi-functional SMT Machine, Create the lowest-cost patch plan

### Features

Single module multi-functional mounter.

Mounting parts: LED, capacitors, resistors, IC, shaped components, etc.

Applicable to vibration feeding system for lens.

Apply to tube, driver, bulb, strip, lamp, panel, ceiling light, down light, screen display, street light etc.

### Exclusive patented technology:

Electronic feeder feeding system

Vision for the flight identification, MARK correction

Auto-optimization feature after coordinates generated, etc.



### Technical Parameter

Create the lowest-cost patch solution for better cooperation with you

|                           |  |
|---------------------------|--|
| PCB Length Width          | Max.:1200mm*350mm Min.:50mm*50mm   |
| PCB Thickness             | 0.5~5mm  |
| PCB Clamping              | Adjustable Pressure Pneumatic  |
| Mounting Mode             | Group picking and placing separately, taking separately and placing separately   |
| System                    | Windows 7  |
| Software                  | R&D independently  |
| Display                   | LED Monitor  |
| Input Device              | Keyboard, Mouse  |
| No. of Camera             | 2 sets of imported camera/Vision for the flight identification + Mark correction |
| Repeat mounting Precision | ±0.02mm  |
| Mounting Height           | <15mm  |
| Mounting Speed            | 30000CPH   |
| Components                | LED, IC, capacitors, resistors, shaped components etc.                           |
| Components Space          | 0.2mm  |
| No. of Feeders            | 1*20PCS  |
| No. of nozzles            | Single module, totally 8   |
| Power                     | 220AC 50HZ   |
| Power Consumption         | 4KW  |
| Operating Environment     | 23 ±3  |
| Conveyor Transmission     | Max Length:1.2m  |
| Transmission Speed        | >500mm/sec.  |
| Transmission Direction    | single (left→right or right→left)  |
| Transmission Mode         | Online   |
| Position Mode             | Optical  |
| Air Pressure              | >5.0kg/cm <sup>2</sup>   |
| Air Consumption           | <200L/min.   |
| Electrical Control        | Research and Develop Independently by ETON                                       |

|                            |  |
|----------------------------|--|
| Motion Control Card 1 sets | Research and Develop Independently by ETON |
| X,Y Axes Driving           | Servo motor                                |
| Feeding Way                | Electronic Feeder                          |

### **Packaging& Shipping**



Package: Standard export package(Wooden case with vacuum package)  
Shipping: Shenzhen port within 15 days after payment

***Faith ful cooperation, win –win future!***

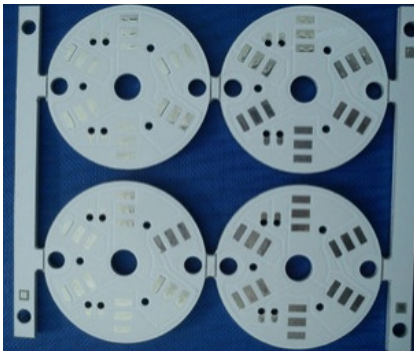
**Excellent After-sale Service.**

**Maintenance Period: 1 year.(whole machine, any parts need to be repaired or replaced will be free)**

**Upgrade the software will be free**

**Visit customer regularly and gather information.**

**Provide latest information about technology and equipment.**



### **Company profile**

***Eton mission:*** professional, excellent technology, sharing the results.

***Eton goal:*** to create a national brand, build international Chinese enterprise.

***Eton purpose:*** to create value for customers, creating benefits for society.



Complete packing, guaranteed with latest product display.



## FAQ

**Q: Quality Principle**

We stick to quality first, client-oriented, Continuous improvement!

**Q: Why choose us ?**

We adopt professional, high efficiency, low consumption and specialized in research and development, production, sales and service of SMT high-speed SMT machine automation.

**Q: What's the credibility of your brand?**

Our company stick to sincere business, focus on R&D, manufacturing intentions, considerate service, customer trust.

**Q: What is your delivery date?**

The delivery date is about 15 days after receipt of payment.

## Business Card

|         |   |
|---------|---|
| Company | Shenzhen Eton Automation Equipment Co., Ltd   |
| Address | The 44th Bld., The 5th. Huaidecui gang Industrial area, Fuyong, Bao'an, Shenzhen, China |
| Mobile  | +86 13652436725   |

|        |                 |
|--------|-----------------|
| Wechat | +86 13652436725 |
| QQ     | 1762937684      |



**Shenzhen Eton Automation Equipment Co., Ltd.**



0086 13670197725 (Whatsapp/Wechat)



[linda@eton-mounter.com](mailto:linda@eton-mounter.com)



[smtmountingmachine.com](http://smtmountingmachine.com)

HENGFENG INDUSTRIAL AREA,ZHOUSHI ROAD NO. 739,HEZHOU COMMUNITY,HANGCHENG  
STREET,BAOAN,SHENZHEN,CHINA