



220AC Smd Led Pick And Place Machine E6T-1200 Conveyor Transmission Max Length 1200MM

Our Product Introduction

for more products please visit us on smtmountingmachine.com

Basic Information

- Place of Origin: China
- Brand Name: ETON
- Certification: CE CCC ISO
- Model Number: HT-E6T
- Minimum Order Quantity: 1
- Price: US \$45000 - 46000 / Unit
- Packaging Details: Standard export package(Wooden case with vacuum package)
- Delivery Time: 30
- Payment Terms: T/T
- Supply Ability: 50



Product Specification

- Dimension: 2550*1650*1600 MM
- Total Weight: 1200 KG
- PCB Length Width: Max 1200*350 MM
- Mounting Speed: 30000 CPH
- Power Supply: 220 AC 50 HZ
- No.of Nozzles: Single Module.totally 8
- Highlight: **smd assembly machine,
smd pick and place machine**



More Images



Product Description

Product Description:

Multi-functional SMT Machine, Create the lowest-cost patch plan

Features

Single module multi-functional mounter.

Mounting parts: LED, capacitors, resistors, IC, shaped components, etc.

Applicable to vibration feeding system for lens.

Apply to tube, driver, bulb, strip, lamp, panel, ceiling light, down light, screen display, street light etc.

Exclusive patented technology:

Electronic feeder feeding system

Vision for the flight identification, MARK correction

Auto-optimization feature after coordinates generated, etc.

Technical Parameter

Create the lowest-cost patch solution for better cooperation with you

PCB Length Width	Max.:1200mm*350mm Min.:50mm*50mm
PCB Thickness	0.5~5mm
PCB Clamping	Adjustable Pressure Pneumatic
Mounting Mode	Group picking and placing separately, taking separately and placing separately
System	Windows 7
Software	R&D independently
Display	LED Monitor
Input Device	Keyboard, Mouse
No. of Camera	2 sets of imported camera/Vision for the flight identification + Mark correction
Repeat mounting Precision	±0.02mm
Mounting Height	<15mm
Mounting Speed	30000CPH
Components	LED, IC, capacitors, resistors, shaped components etc.
Components Space	0.2mm
No. of Feeders	1*20PCS
No. of nozzles	Single module, totally 8
Power	220AC 50HZ
Power Consumption	4KW
Operating Environment	23 ±3
Conveyor Transmission	Max Length:1.2m
Transmission Speed	>500mm/sec.
Transmission Direction	single (left→right or right→left)
Transmission Mode	Online
Position Mode	Optical
Air Pressure	>5.0kg/cm ²
Air Consumption	<200L/min.
Electrical Control	Research and Develop Independently by ETON
Motion Control Card 1 sets	Research and Develop Independently by ETON
X,Y Axes Driving	Servo motor
Feeding Way	Electronic Feeder

Packaging& Shipping



Package: Standard export package(Wooden case with vacuum package)

Shipping: Shenzhen port within 15 days after payment

Faith ful cooperation, win –win future!

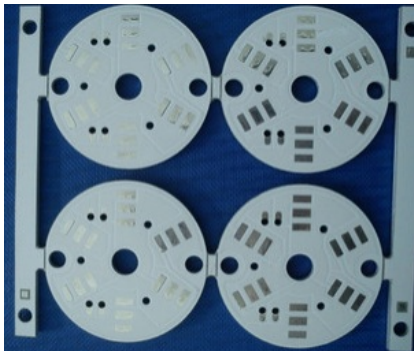
Excellent After-sale Service.

Maintenance Period: 1 year.(whole machine, any parts need to be repaired or replaced will be free)

Upgrade the software will be free

Visit customer regularly and gather information.

Provide latest information about technology and equipment.



Company profile

Eton mission: professional, excellent technology, sharing the results.

Eton goal: to create a national brand, build international Chinese enterprise.

Eton purpose: to create value for customers, creating benefits for society.



Complete packing, guaranteed with latest product display.



FAQ

Q: Quality Principle

We stick to quality first, client-oriented, Continuous improvement!

Q: Why choose us ?

We adopt professional, high efficiency, low consumption and specialized in research and development, production, sales and service of SMT high-speed SMT machine automation.

Q: What's the credibility of your brand?

Our company stick to sincere business, focus on R&D, manufacturing intentions, considerate service, customer trust.

Q: What is your delivery date?

The delivery date is about 15 days after receipt of payment.

Business Card

Company	Shenzhen Eton Automation Equipment Co., Ltd
Address	The 44th Bld., The 5th. Huaidecuigang Industrial area, Fuyong, Bao'an, Shenzhen, China
Mobile	+86 13652436725

Wechat	+86 13652436725
QQ	1762937684



Shenzhen Eton Automation Equipment Co., Ltd.



0086 13670197725 (Whatsapp/Wechat)



linda@eton-mounter.com



smtmountingmachine.com

HENGFENG INDUSTRIAL AREA,ZHOUSHI ROAD NO. 739,HEZHOU COMMUNITY,HANGCHENG
STREET,BAOAN,SHENZHEN,CHINA