



Shenzhen Eton Automation Equipment Co., Ltd.
smtmountingmachine.com

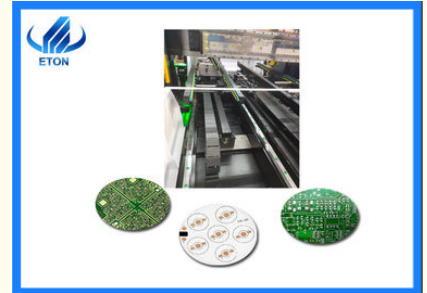
Durable SMT Mounting Machine Led Bulb Assembly 80000cph Capacity CCC Approval

Our Product Introduction

for more products please visit us on smtmountingmachine.com

Basic Information

- Place of Origin: CHINA
- Brand Name: ETON
- Certification: CCC
- Model Number: HT-E8D
- Minimum Order Quantity: 1 set
- Price: 80000 usd
- Packaging Details: Wooden case
- Delivery Time: 4 weeks after payment
- Payment Terms: T/T, Western Union
- Supply Ability: 50 sets per month



Product Specification

- Warranty: 1 Year
- Power: 8 Kw
- Capacity: 80000 Cph
- Max Pcb: 1200*300 Mm
- Name: SMT Pick And Place Machine
- Apply To: Led Chip, Ic , Capacitor, etc
- Highlight: **smt pick and place machine, smt pick and place equipment**



Product Description

Led bulb assembly machine

The placement machine is the main equipment in the SMT production line. The placement machine has evolved from an early low-speed mechanical placement machine to a high-speed optical centering placement machine, and has evolved into a modular and flexible connection.

Multifunctional machine----HT-E8D

HT-E8D is multifunctional smt assembly machine, it can apply to Power driver, electric board, lens, linear bulb, household appliance etc.

There are two mounting modules, two system, can produce two different products at same time.

Suitable for most of the components

Suitable for max size:17mm, min size:0402:	
LED	Capacitors
Resistors	Shaped components
IC	Shaped components

Axis Configuration

1.Types:

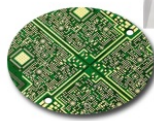
X-axis: The moving head assembly is parallel to the PCB transfer direction.

Y-axis: The moving head assembly is perpendicular to the PCB transfer direction.

Z-axis: Controls the height of the work head assembly.

R axis: Controls the rotation of the nozzle shaft of the working head assembly.

W axis: adjust the width of the transport rail.



Axis of HT-E8D:

The x axis is high-end magnetic linear motor, and the y axis and y axis is servo motor, it promise the high precision---0.02mm.

PCB

The max pcb size is 1200*300 mm, the min size is 100*100 mm, also the thickness is 0.5-5 mm, it is using the adjustable pressure pneumatic to clamping.

Exclusive patented technology:

Electric feeder feeding system

Vision alignment flight identification, mark correction

Non-stop material re-loading function

Auto-optimization after coordinates generated, etc.

High mounting speed:

The mounting speed of HT-E8D is 80000 chip per hour, there are four factors promote patch speed:

1. There are two mounting modules, two system, can produce two different products at same time.
2. Powerful feeding method: electric feeder with double motor, support non-stop material re-loading function.
3. High speed conveyor transmission speed which more than 500mm/sec.
4. Flexible mounting mode: Group picking and separate placing, separate picking and separate placing.

About us:

We are a manufacturer specializing in LED placement machines, ETON Automation Equipment Co., Ltd., established in 2011. We have been steadfast in research and development in the field of LED. We believe that in the smt field, more companies will

be able to achieve maximum capacity and higher social value.

Our future plans are dedicated to the global market, tailoring more perfect placement machines for different market needs.

Always customer-oriented, market-oriented, determined to become the world's most competitive placement machine and cutting-edge electronic testing equipment manufacturing and service provider



Shenzhen Eton Automation Equipment Co., Ltd.



0086 13670197725 (Whatsapp/Wechat)



linda@eton-mounter.com



smtmountingmachine.com

HENGFENG INDUSTRIAL AREA,ZHOUSHI ROAD NO. 739,HEZHOU COMMUNITY,HANGCHENG
STREET,BAOAN,SHENZHEN,CHINA