



## Whole SMT production line solution, high quality multi-functional high speed pick and place machine

### Our Product Introduction

for more products please visit us on [smtmountingmachine.com](http://smtmountingmachine.com)

#### Basic Information

- Place of Origin: china
- Brand Name: ETON
- Certification: ccc, ce, sira
- Model Number: HT-E5D
- Minimum Order Quantity: 1 unit
- Price: \$75,000.00/unit
- Packaging Details: waterproof material packing and wooden case
- Delivery Time: 30 working days
- Payment Terms: L/C, T/T
- Supply Ability: 80 units per month

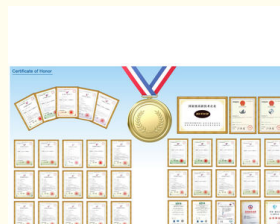


#### Product Specification

- Pcb Size: 100\*100 Mm~500\*300 Mm
- PCB Thickness: 0.5~3 Mm
- PCB Clamping: Adjustable Pressure Pneumatic
- Mounting Mode: Group Picking And Separate Placing\separate Picking And Separate Placing
- Software: Windows 7
- Display: Touch Screen Monitor
- No. Of Camera: 4
- Power: 380AC 50HZ
- Power Consumption: 8 Kw
- Mounting Repeat Precision:  $\pm 0.02$ mm Chip
- Mounting Height: <36 Mm(component Max Height 20 Mm)
- Mounting Speed: 80000 CPH(optimum)
- No. Of Feeders: 72 PCS
- No. Of Nozzles: 80 Nozzles



#### More Images



## Product Description

### Double-module magnetic linear motor multifunctional pick and place machine



#### Why you need a multifunctional pick and place machine?

Comparison of multifunctional machine and high-speed machine: the multifunctional machine has high placement accuracy and can mount a variety of components; the high-speed machine can only put on a specific product, but the placement speed is high. In the SMT chip production plant, multifunctional chip mounter and high-speed chip mounter are used together.

**New attack, new breakthrough: 4 exclusive patented technologies, 4 major features, 3 major technical breakthroughs . Here you can find what you need!**

#### 4 exclusive patented technologies:

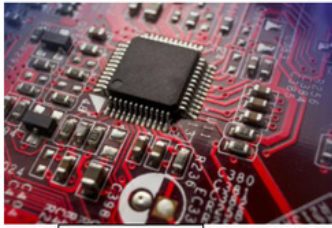
1. Electronic feeder feeding system
2. Vision alignment flight identification, mark correction
3. Non-stop material re-loading function
4. Auto-optimization after coordinates generated

#### 4 core features:

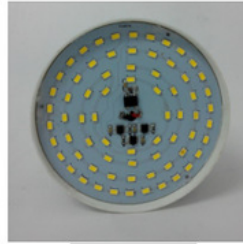
1. Dual system,dual module multifunctional mounter. To produce two different products at the same time.
2. Mounting components: LED, capacitors, resistor, IC, shaped components,etc.
3. Component: Min. Size:0402, Max height:36mm
4. Application:power driver, electric board,lens,linear bulb, household appliance.

**mount various types of products:** capacitors, resistors, lenses, lamp beads, IC, heterosexual components, etc.

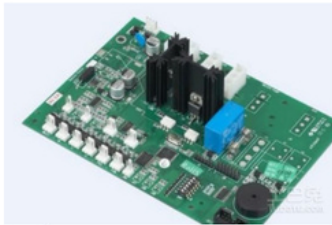
Application :



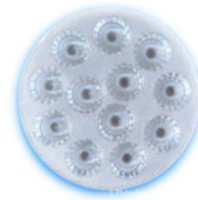
Electric board



Linear bulb



Household appliance



lens

serve SMT line solution:

1. Economical SMT Assembly line, suitable for LED light, middle PCB, TV



2.Hi speed SMT Assembly line, Suitable for GPS, Car PCB, DVD, Home Used PCB



3.High Speed SMT Assembly line, Suitable for Mobile phone, Laptop, GPS, Industrial PCB

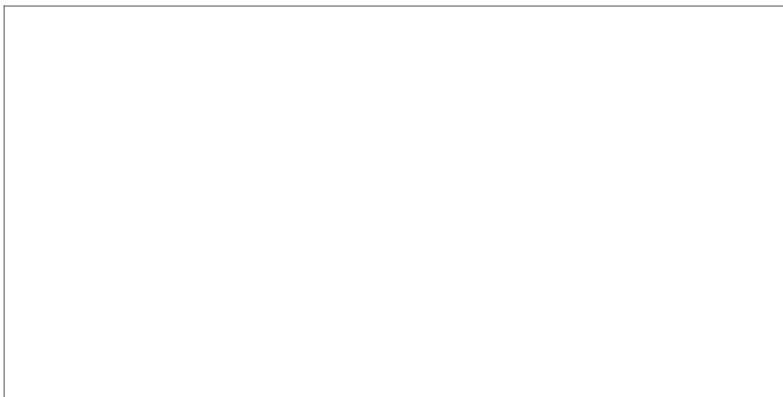


4.DIP insert SMT Assembly line.



We have a professional **R&D team**, we can design the SMT line for you according to your needs, and the customer service 24 hours online to provide you with services without worrying about the time difference. If you have any questions, please call or log on our official website!

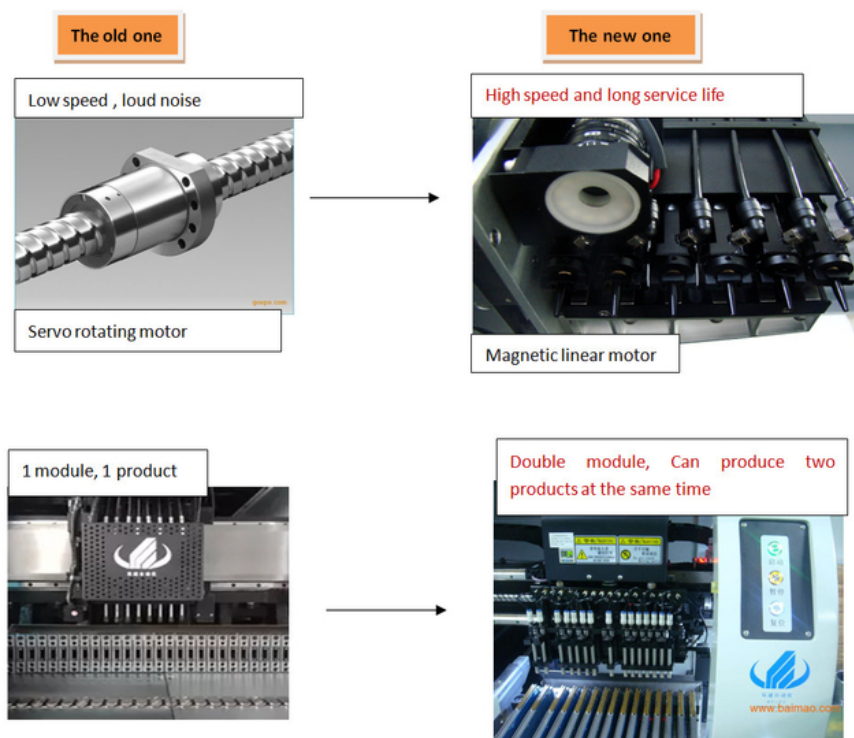
technical parameter:



Birth place	China
Model	HT-E5D
Dimension	1650*2000*1550mm
PCB	Max:500*300mm Min:100*100mm
PCB thickness	0.5—3mm
Mounting mode	Group picking and separate placing Separate picking and separate placing
Mounting precision	+/-0.02mm
Mounting height	<36mm
Mounting speed	8000CPH
Power consumption	8KW
No of feeders station	72
No of nozzles	20
XYZ axis drive way	High-end magnetic linear motor+servo motor

If you want to know more about its parameters, don't hesitate to contact us in private, we will serve you sincerely online at any time!

### 3 New technological breakthroughs:



#### Supplementary explanation:

Using 4 sets of imported cameras, more accurate flight recognition

Magnetic suspension linear motor instead of the original rotating motor, faster speed and longer life

Double modules, two different products can be mounted at the same time, one The machine can be used as two

#### Sincere services:

##### Pre-sale service:

1. Provide machine related videos to let you know our machine directly.
2. We have a professional team of consultants who can answer any of your questions at any time.
3. If you have needs, you can visit the factory to learn about the machine. We will have professional technicians and international specialists to accompany you to ensure barrier-free English communication.

##### On-sale service:

As soon as your order is received, we will process it immediately and stock it up. After receiving the deposit, we will ship immediately.

##### After-sales service:

1. Provide manual / video for machine installation, adjustment, setting and maintenance.
2. If any problems occur and you cannot find a solution, please do not hesitate to contact us immediately, we will be at your service online at any time.
3. If you agree to pay the fee, our engineers and technicians can be dispatched to your country to provide services.
4. The machine is guaranteed for 12 months. During the warranty period, if there are any parts that are not artificially damaged. We will replace your new one for free. After the machine issues our bill of lading, the warranty begins.
5. We have an independent after-sales service team. In case of emergency, please call the salesperson or our after-sales manager. On-site maintenance or instructions can also be provided.





### About us:

ETON ( Shenzhen ETON automation equipment CO.,LTD.)

- 1.We are committed to the R & D, production, sales and after-sales technical services of SMT high-speed patch.
- 2.We are 13 years old this year , still younger, but we have won many prizes: the 4th China · LED Pioneer Award, National High-tech Enterprise, Industry Special Contribution Award...
- 3.We are still committed to R & D and innovation to continuously improve the speed and quality of the pick and place machine.
- 4.We are very happy to have many friends from all directions, we are also willing to make progress together with friends from all over the world.



**Nationally certified well-known brand:** has an independent R&D team, has achieved a number of technological breakthroughs, products are widely exported to South Korea, India, Vietnam, Egypt and more than 20 countries.



#### FAQS:

1. This is the first time I use this kind of machine, is it easy to operate?  
There is English manual or guide video that show you how to use machine. Generally you can learn in two to three days.
  - 2.If machine have any problem after I receive it, how can I do ?If the machine has quality problems that are not caused by humans, we will re-send you new replacements for free. However, the quality problem of the product itself generally does not occur, and each machine will be inspected by a person before the shipment.
  3. How long can be shipped after the order ?  
After the order is placed, we will immediately prepare the goods, generally can be shipped within 1 month, except for customized products .
  4. What can we do for you?  
Free placement machine installation, operation training, SMT production line plan design.
  5. Are you a trading company or a factory?  
We have the factory and we are committed to the R & D, production, sales and after-sales technical services of SMT high-speed patch.
  6. Do you have your own R&D team?  
Yes, we can customize products as your requirements.
  7. How can I buy this machine from you? ( Very easy and flexible !)
- A. Consult us about this product on line or by e-mail.
  - B. Negotiate and confirm the final price , shipping , payment methods and other terms.
  - C. Send you the proforma invoice and confirm your order.
  - D. Make the payment according to the method put on proforma invoice.
  - E. We prepare for your order in terms of the proforma invoice after confirming your full payment.
- And 100% quality check before shipping.
- F.Send your order by air or by sea.

**Add:** If you have any other questions, please do not hesitate to contact us, there is our contact information at the end, we will serve you 24 hours.



**welcome to Contact us:**

**Shenzhen ETON Automation Equipment Co., Ltd.**  
**International Hotline:** 0755-27311922  
**International Department Commissioner:** Ms. He: 13670197725

**Address:** Yitong Automation, Building 44, Area 5, Cuigang Industrial Park, Huaide, Fuyong, Baoan District, Shenzhen  
**Website:** [www.eton-mounter.com](http://www.eton-mounter.com)/[www.etonsmt.com](http://www.etonsmt.com)/ [www.etonsz.net](http://www.etonsz.net)



**Shenzhen Eton Automation Equipment Co., Ltd.**



0086 13670197725 (Whatsapp/Wechat)



[linda@eton-mounter.com](mailto:linda@eton-mounter.com)



[smtmountingmachine.com](http://smtmountingmachine.com)

HENGFENG INDUSTRIAL AREA,ZHOUSHI ROAD NO. 739,HEZHOU COMMUNITY,HANGCHENG  
STREET,BAOAN,SHENZHEN,CHINA