



## automatic pick and place machine LED making machine with high speed high precision

### Our Product Introduction

for more products please visit us on [smtmountingmachine.com](http://smtmountingmachine.com)

#### Basic Information

- Place of Origin: CHINA
- Brand Name: ETON
- Certification: CCC,CE,SIRA
- Model Number: HT-E8S-1200
- Minimum Order Quantity: 1 SET
- Packaging Details: Wooden case
- Supply Ability: 50 SET /month



#### Product Specification

- Length: 2550mm
- Width: 1650mm
- Height: 1550mm
- PCB Thickness: 0.5-5mm
- Warranty: 1 Year
- Feeders Station: 28 PCS Single Module
- Nozzles: 12 PCS Single Module
- Feeding Way: Electric Feeder With Double Motor
- Highlight: 2550mm Length SMT Chip Mounter,  
0.2mm Components SMT Chip Mounter,  
45000CPH Bulb LED Chip Mounter

## Product Description

### Multi-functional high precision with good stable SMT pick and place machine

#### Introduce products

The machine is single module magnetic linear motor multifunctional pick and place machine, which can produce bulb, flexible strip, lens, drive etc.

#### Product parameter

|                         |  |
|-------------------------|--|
| PCB Length width        | Max:1200*500mm<br>Min:100*100mm  |
| PCB thickness           | 0.5~5mm  |
| PCB clamping            | Adjustable pressure pneumatic  |
| Mounting mode           | Group pick and separate placing, separate pick and separate placing                |
| camera                  | 2 sets of imported camera<br>Vision for the flight identification, mark correction |
| Mounting precision      | ±0.04  |
| Mounting element height | <15mm(automatic changing)  |
| Mounting speed          | 45000CPH   |

#### Feeding system

The pick and place machine single module, totally 28 PCS feeder station and 12 PCS nozzles, the feeding way is electric feeder with double motor.

#### Application

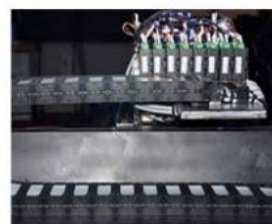
Components: LED, resistor, capacitor, shaped components and so on.

Application: flexible light, bulb, panel light, lens, etc.

#### Machine details



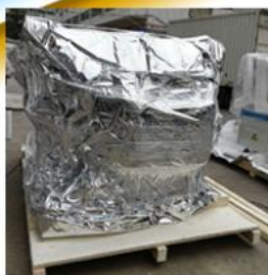
### Product details



#### Way of packing:

We adopt vacuum packing, the outer packing is in wooden cases

## Packing details



#### Logistics transportation

We support three modes of transportation, which is land, sea and air transport



## Transportation

### After sales service

1. Training and installation are provided free of charge
2. Visit customers regularly and gather information

### FAQ:

#### Q: what is your delivery date?

A: The delivery date is 30 days after receipt of deposit.

#### Q: What is terms of payment?

A: 30% deposit in advance and 70% payment before delivery.

#### Q: Machine is easy to operate?

A: Yes, Machine is easy to operate, usually 3 to 5 days training of operating is enough.

#### Q: 4. How is your training?

If you buy our machine, we will send our engineer to your factory to install machine and training freely.



**Shenzhen Eton Automation Equipment Co., Ltd.**



0086 13670197725 (Whatsapp/Wechat)



[linda@eton-mounter.com](mailto:linda@eton-mounter.com)



[smtmountingmachine.com](http://smtmountingmachine.com)

HENGFENG INDUSTRIAL AREA, ZHOUSHI ROAD NO. 739, HEZHOU COMMUNITY, HANGCHENG STREET, BAOAN, SHENZHEN, CHINA