



## 12 Heads SMT Pick And Place Machine 45000CPH Power Driver SIRA

### Our Product Introduction

for more products please visit us on [smtmountingmachine.com](http://smtmountingmachine.com)

#### Basic Information

- Place of Origin: CHINA
- Brand Name: ETON
- Certification: CCC/CE/SIRA
- Model Number: HT-E8S-1200
- Minimum Order Quantity: 1 Set
- Packaging Details: wooden box with vacuum package
- Delivery Time: 30 days after deposit
- Payment Terms: T/T
- Supply Ability: 50 sets per month



#### Product Specification

- Dimension: 2550\*1650\*1550mm
- Total Weight: 1700kg
- PCB Thickness: 0.5~5mm
- PCB Clamping: Adjustable Pressure Pneumatic
- Mounting Precision:  $\pm 0.04\text{mm}$
- Warranty: 1 Year
- Delivery Date: Within 30 Days After Payment
- Packing: Standard Export Packing
- Highlight: **12 Heads SMT Pick And Place Machine ,  
SMT Pick And Place Machine 45000CPH,  
SIRA Electric Board SMT Mounter**

## Product Description

### High speed 12 heads 45000CPH LED manufacturer SMT pick and place machine Power driver/electric board mounter

#### Features:

- 1.Single module magnetic linear motor multifunctional pick and place machine.
- 2.Precision mounting head system:  
12 nozzles, group picking and splitting and splitting and splitting, can meet the installation requirements of different components.  
Each placement head is independently controlled by an independent servo motor, ensuring that the machine can pick and place more accurately at higher speeds.
- 3.Mounting components: LED, capacitor, resistor, Shaped components.
- 4.Components size: Min size: 0402. Max height:15mm.
- 5.Application: Power driver, electric board, lens, linear bulb, household appliance, LED tube/bulb/panel/display/down-light/lens/Ceiling light etc.

With the rapid development of the LED industry, the quality requirements for automation equipment products are getting higher and higher, and the ETON placement machine is equipped with MARK point positioning vision + equipment recognition functions. Pursuing high speed and high stability, it is a cost-effective and practical LED multi-function placement machine.

#### Technical parameter:

	HT-E8S-1200
L*W*H	2550*1650*1550mm
Total Weight	1700kg
PCB Length Width	MAX:1200*500mm MIN:100*100mm
PCB Thickness	0.5~5mm
Mounting Mode	Group picking and separate placing, separate picking and separate placing
Mounting height	<15mm
No. of Camera	2sets of imported camera
Mounting Precision	±0.04mm
Mounting Speed	45000CPH
Components Space	0.2mm
Feeders Station	28PCS single module
No. of nozzles	12PCS single module
Power	380AC 50Hz
Power Consumption	4KW
X,Y,Z, Axis Drive way	High-end magnetic linear motor + servo motor

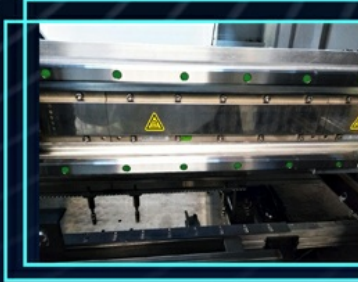
#### Product Details:



## Product details

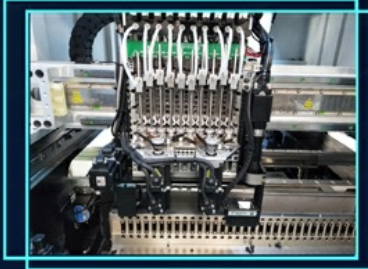
### High-end magnetic linear motor + servo motor

It can ensure the high-speed and stable operation of the equipment, while maintaining the positioning accuracy of the equipment for a long time, and the placement process is smooth and low-noise.



### 12 PCS Mounting head

Each head is controlled by an independent servo motor, which can absorb different components at the same time, which is suitable for mounting a variety of products.



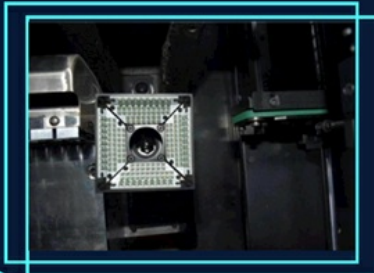
### Independent R&D software

Touch screen monitor  
Chinese and English interface, easy to operate  
Independent software research and development



### Vision system + Vision camera

Vision alignment flight identification,  
Mark correction, accurate  
identification of components, saving  
time and improving production  
efficiency to the greatest extent



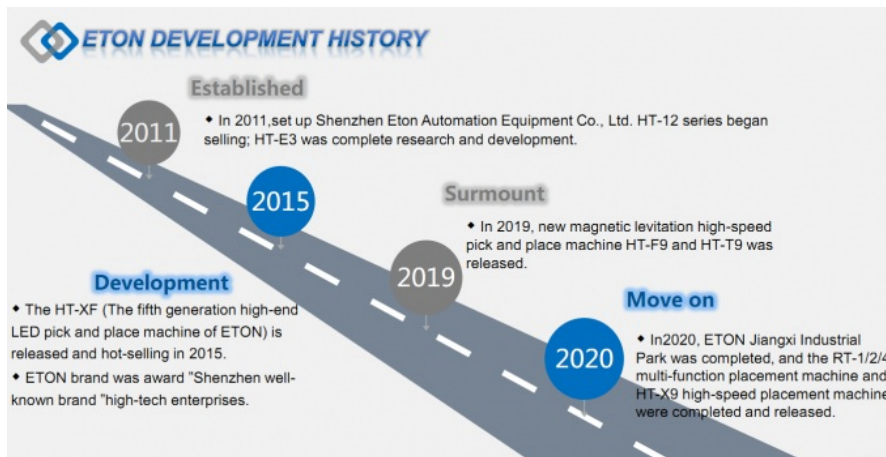
### Our company:

Shenzhen Eton Automation Equipment Co., Ltd. is the world's leading manufacturer of "high-efficiency and low-consumption" placement machines. At the same time, ETON is also China's largest high-tech manufacturer, with strong design, R&D, manufacturing, sales and service capabilities.

We have more than 10 years of experience in the field of SMT machines and a unique understanding of SMT technology. We provide long-term professional services for domestic and foreign electronics companies.

The products are of high quality, competitive price, easy to operate and energy saving, and are very popular in the domestic and foreign markets. All our machines are widely used in electronic circuits, LED industries, instruments and equipment.

### Development History:



#### Client:

We have exported ETON placement machines to more than 20 different countries, such as India, Egypt, South Korea, Vietnam, Turkey, Brazil, etc.

In the domestic LED market share reached 80%, many well-known brands such as NVC, Foshan Lighting, Konka, navigate, OPPL, HELI, etc., are our customers.

In foreign countries, such as India, RK, SURYA, Fiem, Calcom, POLYCRB, etc., are our customers

#### Exhibition:

Our company participates in many exhibitions at home and abroad every year,

Domestic exhibitions include the Munich exhibition in Shanghai, the Guangya exhibition in Guangzhou, the led exhibition in Chongqing, the NEPCON China exhibition in Shenzhen and so on.

Foreign countries include India, Turkey, Egypt, Pakistan, Vietnam, Russia and more than 20 countries.



#### Packaging and transportation:

1. Our main transportation methods are sea, rail, air, etc.
2. The packaging method is standard export packaging, using double-layer packaging of vacuum packaging + wooden boxes.
3. Delivery time: Delivery will be made within 30 days after payment.

#### Service:

We have an office in India. If you buy our machine, we will arrange an engineer to help you install, debug and train until you learn to use the machine.

In addition, we also have local engineers in Turkey and Egypt, who can provide you with free installation and training.  
1 year warranty, we will arrange delivery for you within 30 days after payment. We will help you solve any problems during the warranty period.  
Chinese engineers will provide you with technical support online. If necessary, Chinese engineers can also go to your factory to help you install the machine.  
We have professional engineers who can provide you with the design of a whole production line plan.

#### **FAQ:**

##### **1.How is the warranty?**

Standard warranty is one year, during warranty, any parts need to be repaired and replaced will be free.

##### **2.How is the breakdown rate of machine?**

Our machine is very stable, the breakdown rate is less than 0.001.

##### **3. Is your software interface in English?**

English interface and Chinese interface are both available.

##### **Q4:How can you make sure we will receive the machine with high quality?**

A4: Our team will inspect each batch of machine before delivery, we have certificates of CE,CCC,SIRA.



**Shenzhen Eton Automation Equipment Co., Ltd.**



0086 13670197725 (Whatsapp/Wechat)



linda@eton-mounter.com



smtmountingmachine.com

HENGFENG INDUSTRIAL AREA,ZHOUSHI ROAD NO. 739,HEZHOU COMMUNITY,HANGCHENG  
STREET,BAOAN,SHENZHEN,CHINA