



## SIRA 120w SMT Solder Paste Printer Circuit Board Printing Machine 2.0mm PCB

### Our Product Introduction

for more products please visit us on [smtmountingmachine.com](http://smtmountingmachine.com)

#### Basic Information

- Place of Origin: CHINA
- Brand Name: ETON
- Certification: CCC/CE/SIRA
- Model Number: ET-S1200
- Minimum Order Quantity: 1 Set
- Packaging Details: wooden box with vacuum package
- Delivery Time: 30 days after deposit
- Payment Terms: T/T
- Supply Ability: 50 sets per month



#### Product Specification

- Power: 220V 50Hz
- PCB Plate Thickness: 0.2-2.0mm
- Weight: 360 Kg
- Dimension: (L)1600 X(W)900 X(H)1650 Mm
- Power Consumption: 120w
- Type: Semi-automatic Solder Paste Printing Machine
- Warranty Period: 1 Year
- Mode Of Transportation: Sea/railway/air
- Highlight: **SIRA SMT Solder Paste Printer, 120w SMT Solder Paste Printer, 2.0mm PCB Circuit Board Printing Machine**



## Product Description

### Hot-selling factory price/SMT semi-auto solder paste printer/Circuit Board Printing Machine for SMT Production Line

#### What is Solder paste printing machine?

Modern solder paste printers generally consist of plate loading, solder paste addition, imprinting, and circuit board transfer. Its working principle is: first fix the circuit board to be printed on the printing positioning table, and then the solder paste or red glue is printed on the corresponding pad through the stencil by the left and right scrapers of the printer. The transfer station is input to the placement machine for automatic placement.

As a highly intelligent and high-precision electromechanical integrated equipment, SMT patch processing printing machine is one of the main equipment of SMT patch. At present, there are many types of printing presses used for SMT processing solder paste printing, which are classified according to the degree of automation, which can be divided into three categories: manual printing machines, semi-automatic printing machines, and fully automatic printing machines.

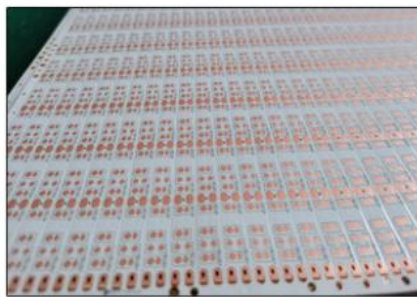
#### Features:

- (1) The governor motor drive scraper, combining precision linear guide, ensure the printing precision;
- (2) Printing scraper can rotate 45 degrees of fixed upwards, printing plate and scraper cleaning and replacement;
- (3) The scraper holder can adjust forward and backward, to select the suitable printing position;
- (4) Combined printing platen, has a fixed groove and positioning PIN, easy installation and adjustment, it is used for single and double panel printing;
- (5) Steel bar-mesh mobile school edition way, combined with the printing machine (PCB) XYZ calibration adjustment, convenient and quick.
- (6) Can be set unidirectional and bidirectional multiple printing methods.

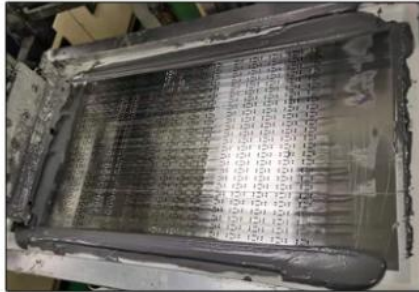
<b>Model</b>	<b>ET-S1200</b>
Printing area	1200×250 mm
Plate Area	1250×300 mm
Stencil Frame Size	470×370 mm 1300×550 mm (L×W)
Positioning way	positioning pin
Scraper Speed	0-100 mm/sec
Power	220V single phase,50/60 HZ
Power Consumption	120 W
PCB plate thickness	0.2-2.0 mm
Plate Trimming	Front/back +/- 10mm Right/Left +/- 10mm
Printing Precision	+/- 0.05 mm
Air supply	5-7 KGF/cm2
Weight	360 kg
Dimension	(L)1600 x(W)900 x(H)1650 mm

#### Steps for usage:

- Step 1. Fully stir the solder paste by hand or a mixer
- Step 2. Take a small amount of solder paste and add it to the stencil
- Step 3. Fix the PCB board to be printed on the printing positioning table
- Step 4. Use the left and right scrapers of the solder paste printer to print the solder paste on the PCB through the stencil.

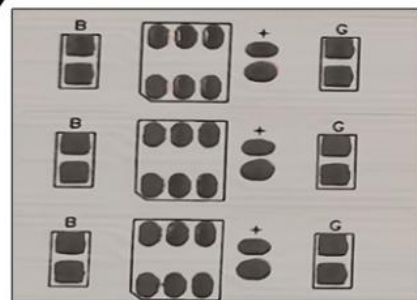
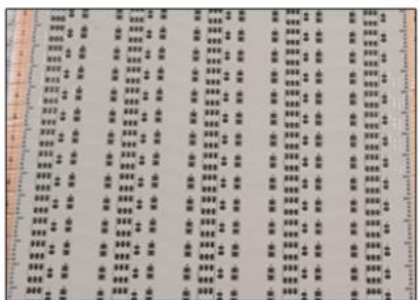


Raw material: Solder Paste and PCB board



Steel mesh

Scraper



PCB board with solder paste

#### **Our company:**

Shenzhen ETON Automation Equipment Co., Ltd. has always adhered to the mission of "professionalism, excellent technology, and sharing results"; "creating a national brand and building an international Chinese enterprise" as the goal; "creating value for customers and creating benefits for the society" For the purpose, keep moving forward.

The company has been committed to the research and development and manufacturing of placement machine equipment, always with the concept of "serving customers", keeping up with the market trend, and launching LED light board placement machines, LED flexible light strip placement machines, A series of products such as non-wire flexible light strip placement machine, LED display placement machine, copper wire lamp placement machine, lens placement machine and module placement machine, maximize customer needs.



ETON Administration Building



ETON R&D and Production Center



ETON front desk



ETON machine exhibition workshop

#### **After-sales service:**

1. Install and train the machine for free, and master the use of the machine within 5 days at most.
2. The warranty period of the whole machine is 1 year, and the parts that need to be replaced during the warranty period are free of charge.
3. Chinese engineers provide online technical support to help you solve problems in the use of the machine.
4. Regularly visit customers to understand the usage and collect customer opinions.

5. Provide customers with the latest production technology and equipment information on a regular basis.
6. Our company is a professional manufacturer of SMT placement equipment. We can provide you with machines and solutions for the entire production line of SMT placement.

#### FAQ:

##### Q1: In addition to semi-automatic printing machines, does your company have other SMT machines?

A: Yes, in addition to semi-automatic printing machines, our company also has equipment such as placement machines, reflow soldering, connection stations, loading machines, receiving machines, etc. If you need it, you can contact me at any time.

##### Q2: Does your company's machines have quality assurance?

A: We have our own industrial park. There are production centre and R&D centre and quality inspection centre to guarantee the machines quality.

##### Q3: How is the breakdown rate of machine?

A: Our machine is very stable, the breakdown rate is less than 0.001.

##### Q4: Who is your client?

A: We have exported machine to different countries, such as India, Egypt, Korea, Turkey, Brazil etc.  
Such as FSL, ETI, KONKA, OPPL, MLS are our client, In India such as RK, Surya, skyquad are our client.

#### Other machine:

## Our Products ETON

### High Speed Pick And Place Machine



HT-F9

HT-X9

HT-T9

HT-F8

### Multifunctional Pick And Place Machine



HT-E5S

HT-E5D

HT-E8D

HT-E8S

RT-1

RT-1/2

RT-4

HT-E6T



## Lorna

☎ : +86 13802252825

💬 : +86 13802252825

✉ : [lorna@eton-mounter.com](mailto:lorna@eton-mounter.com)




WhatsApp scan      Wechat scan



Shenzhen Eton Automation Equipment Co., Ltd.

☎ 0086 13670197725 (Whatsapp/Wechat)

✉ [linda@eton-mounter.com](mailto:linda@eton-mounter.com)

🌐 [smtmountingmachine.com](http://smtmountingmachine.com)

HENGFENG INDUSTRIAL AREA,ZHOUSHI ROAD NO. 739,HEZHOU COMMUNITY,HANGCHENG  
STREET,BAOAN,SHENZHEN,CHINA