



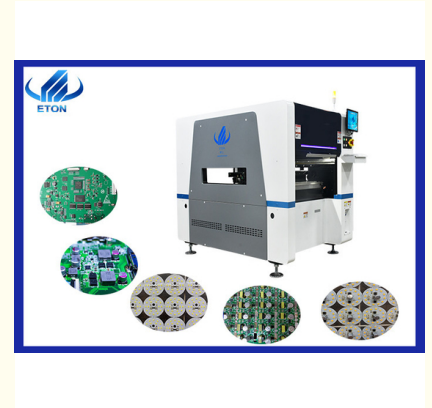
## Vision system high precision multifunctional with 32 PCS heads SMT pick and place machine

### Our Product Introduction

for more products please visit us on [smtmountingmachine.com](http://smtmountingmachine.com)

#### Basic Information

- Place of Origin: China
- Brand Name: ETON
- Certification: CCC, CE, SIRA
- Model Number: RT-1
- Minimum Order Quantity: 1 set
- Packaging Details: vacuum package, wooden case
- Delivery Time: 30 days
- Payment Terms: T/T
- Supply Ability: 50 sets/month



#### Product Specification

- Name: SMT Pick And Place Machine
- Application: SMD Production Line, for SMT Machine
- Power Supply: 380AC 50HZ
- Type: Automatic
- Positioning Accuracy: 0.04mm
- Feeders: 32PCS
- Camera: 2 Pcs
- Warranty: 12 Months



#### More Images



## Product Description

### Vision system high precision multifunctional with 32 PCS heads SMT pick and place machine

#### Product Description

High precision full automatic multifunctional pick and place machine. with 2 pcs camera high precision identification and Mark correction. software Independent research and development by eton , remote control, free upgrade.

#### Feature

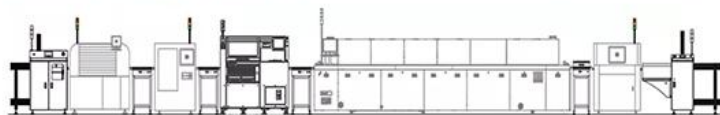
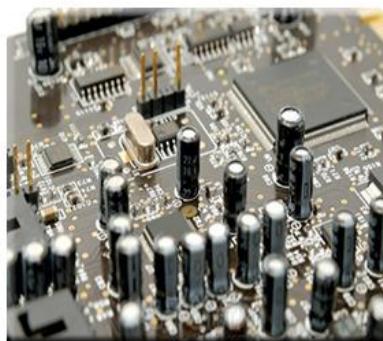
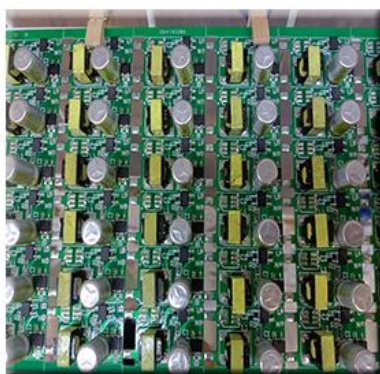
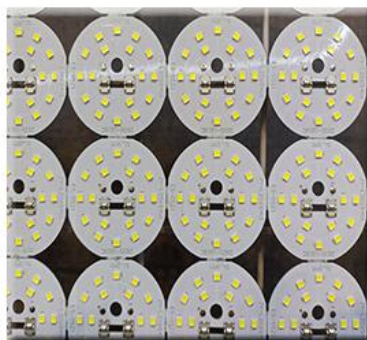
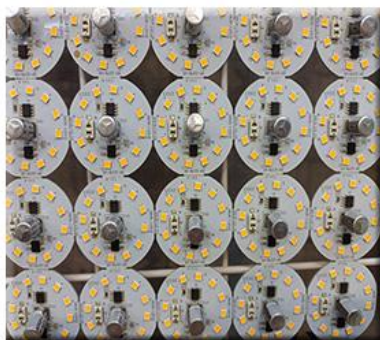
mounting precision 0.04mm

XYZ Axis drive way high-end magnetic linear motor and serv  
producing household appliance ,drive board, LED tube, bulb,etc  
the capacity reach 40000cph

#### Machine parameter

Dimension	1200*1930*1500mm
mounting speed	40000CPH
component space	0.2mm
Power consumption	4KW
Display	touch screen monitor
operating environment	23 ±3

#### Appliance



#### Company profile

Our company was founded in 2011, it is a manufacturing and process solution provide focusing on R&D, production, sales and service of SMT high-speed pick and place machines and SMT peripheral automation equipment.

Our industrial park in Jiangxi, covers an area of 53 square meters, more than 300 employees. Enterprise patent: 9 invention patents, 12 software copyrights, 112 practical patents. And our products are exported to more than 20 countries and regions, such as South Korea, India, Vietnam, Tunisia, Egypt, Turkey, Russia, Brazil, Iran,etc.



## Package



Packaging process has professional personnel for packaging, loading. Record and track the whole packaging process.

## After sales Service

1. Maintenance period:1year
2. Free installation and training
3. Free software upgrade

## FAQ

Q: if there is a problem with the machine,can it be repaired?

Of course, the machine failure rate is 0.001 , and in addition to the warranty period, we also provide you with free maintenance 1-2 times a year.

Q: How can I buy this machine from you?(Very easy and flexible!)

A: Consult us about this product online or by e-mail.

B: Negotiate and confirm the final price,ship, payment methods and other terms.

C: Send you the proforma invoice and confirm your order.

D: Make the payment according to the method put on proforma invoice.

E: We prepare for your order in term of the proforma invoice after confirming your full payment. And 100% quality check before shipping.

F: Send your order by air or by sea.

Q: How about the quality of your products?

A: We have more than 10 years of experience in this industry, the quality of products is guaranteed, the products are popular at home and abroad, and have won the trust of many customers.

Q: How can I buy this machine from you?(Very easy and flexible!)

A: Consult us about this product online or by e-mail.

B: Negotiate and confirm the final price,ship, payment methods and other terms.

C: Send you the proforma invoice and confirm your order.

D: Make the payment according to the method put on proforma invoice.

E: We prepare for your order in term of the proforma invoice after confirming your full payment. And 100% quality check before shipping.

F: Send your order by air or by sea.

Q:Do you have offices and local engineers in overseas?

Yes, we have established offices and local engineers in Egypt, Turkey and India,etc



**Shenzhen Eton Automation Equipment Co., Ltd.**



0086 13670197725 (Whatsapp/Wechat)



[linda@eton-mounter.com](mailto:linda@eton-mounter.com)



[smtmountingmachine.com](http://smtmountingmachine.com)

HENGFENG INDUSTRIAL AREA,ZHOUSHI ROAD NO. 739,HEZHOU COMMUNITY,HANGCHENG  
STREET,BAOAN,SHENZHEN,CHINA