



## Single module multifunction magnetic linear motor high precision smt mounter machine

### Our Product Introduction

for more products please visit us on [smtmountingmachine.com](http://smtmountingmachine.com)

#### Basic Information

- Place of Origin: CHINA
- Brand Name: ETON
- Certification: CCC/CE/SIRA
- Model Number: HT-E8S-1200
- Minimum Order Quantity: 1 set
- Packaging Details: vacuum packaging and wooden cases
- Delivery Time: 5~8 work days
- Payment Terms: L/C, T/T



HT-E8S-1200

#### Product Specification

- Warranty: 1 Year
- Name: SMT Pick And Place Machine
- Application: SMT Production Line
- Power Supply: 380AV 50HZ
- Weight: 1700kg
- Mounting Speed: 45000CPH
- Usage: SMT Mounting Machine
- Dimension: 2500\*1650\*1550mm
- Pcb Thickness: 0.5~5mm
- NO.of Feeder Station: 28PCS

## Single module multifunction magnetic linear motor high precision smt mounter machine

### Product description

HT-E8S is single module magnetic linear motor multifunctional pick and place machine,. It has 2 PCS camera ,which is 1 PCS MARK camera and 1 PCS flight recognition camera.MARK camera is make the PCB mounting program by scanning the mark point as the benchmark. Flight recognition camera is take photos of the components absorbed by the head, compare the previous mounting procedures with the mark camera, and calculate whether it is necessary to correct the components through compensation.





Dimension	2550*1650*1550mm
Weight	1700kg
PCB length width	1200*500mm 100*100mm
PCB thickness	0.5~5mm
PCB clamping	pneumatic

Mounting mode	group picking and separately placing,separately picking and separately placing
NO.of camera	2 PCS
Mounting precision	$\pm 0.04\text{mm}$
Mounting speed	CPH
NO.of feeders station	64PCS

## Main feature<sup>w</sup>

Magnetic linera motor multifunctional pick and place machine.

Vision alignment flight identification, MARK correction.

Auto-optimization after coordinates generated,etc

Application: Power driver.electric board.lens.DOB bulb.linear bulb.household appliance etc.

Non-stop material re-loading function.

## Detail description

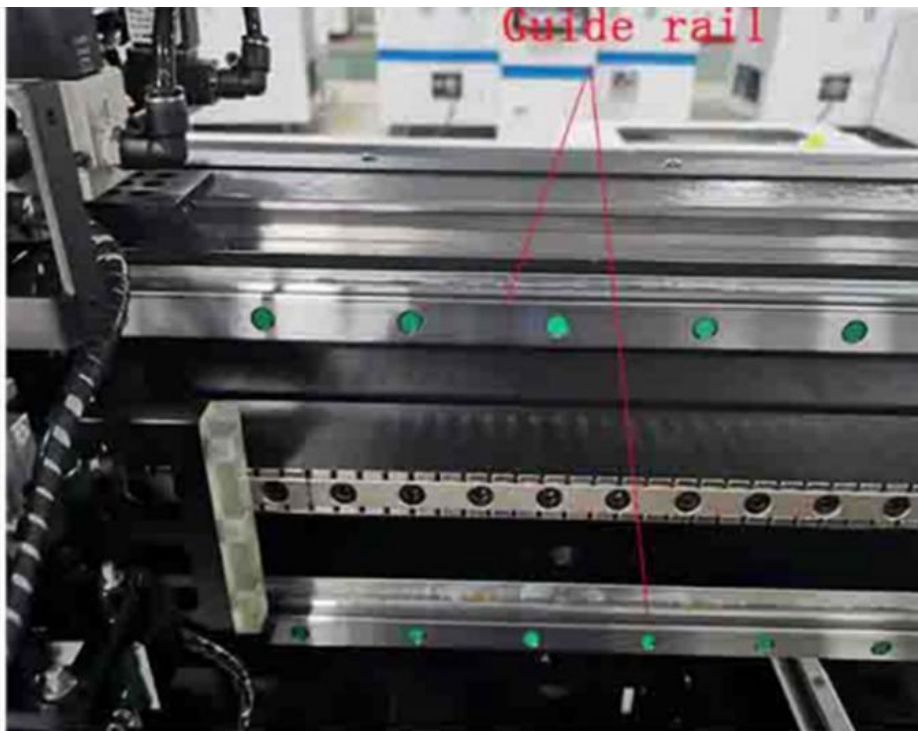
### Mounting head

10 PCS nozzles can group picking and separately placing,seprately picking and separately placing,Because each head is controlled by an independent motor.The mounting head can high speed and accurate mounting lens, LED chip, capacitors, resistors, shaped components.



### Guide rail

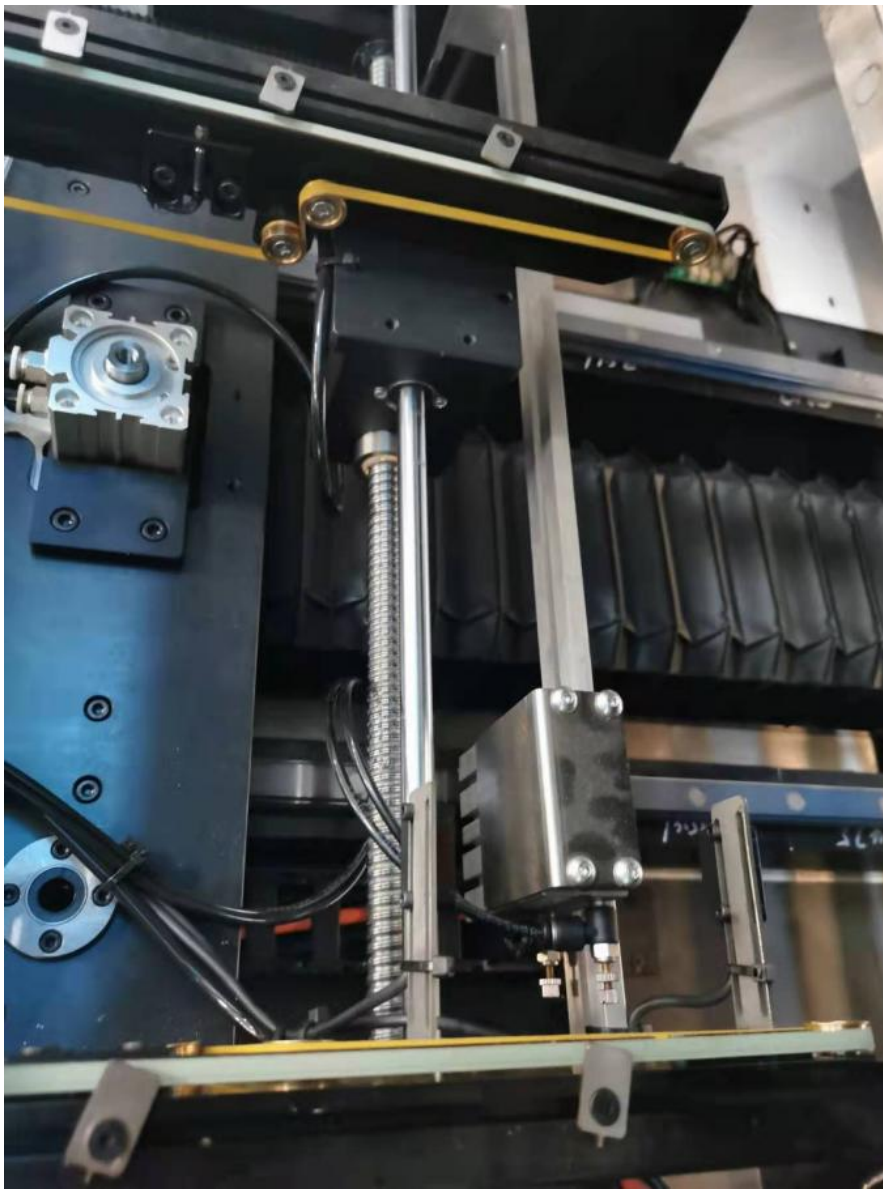
It is used to support and guide the moving part and make high-precision reciprocating motion in the specified direction.



### Screw rod

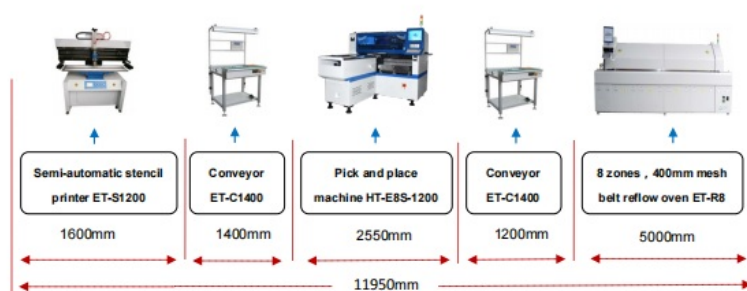
The function of the screw rod is to convert the rotary motion of the servo motor into linear motion, so as to drive the mounting head to move back and forth on the linear guide rail to mount components.





## Production line

ETON - HT-E8S-1200 Semi-automatic Production Line



## Packing&delivery

Our company use vacuum packaging and wooden cases to arrive at the port you require by truck airplane and ship.









## Company Profile

Shenzhen ETON Automation Equipment Co., Ltd., founded in 2011, is a provider focusing on the R & D, production and sales of SMT high-speed mounter and SMT peripheral automation equipment, as well as the manufacturing and process scheme of garment production.



## FAQ

1.What can you company offer us?

A:Free warranty within one year .

2.Can you provide a complete production line machine for us ?

A:Yes,our company can provide for your.

### 3.Why we choose you company?

A:ETON has independently developed the world's first technological invention patents and proprietary technologies, including 9 invention patents, 12 software copyrights and 112 practical patents.

### 4.Can we visit the workshop?

A:If you want to visit the workshop and it's inconvenient for you to come, we can let you visit through video.

### 5.What is your delivery date?

A:The delivery date is about 20 date upon the full payment.



**Shenzhen Eton Automation Equipment Co., Ltd.**



0086 13670197725 (Whatsapp/Wechat)



[linda@eton-mounter.com](mailto:linda@eton-mounter.com)



[smtmountingmachine.com](http://smtmountingmachine.com)

HENGFENG INDUSTRIAL AREA,ZHOUSHI ROAD NO. 739,HEZHOU COMMUNITY,HANGCHENG  
STREET,BAOAN,SHENZHEN,CHINA