



led automatic assembly machine led bulb production line / assembly machine

Our Product Introduction

for more products please visit us on smtmountingmachine.com

Basic Information

- Place of Origin: CHINA
- Brand Name: ETON
- Certification: CCC/CE/SIRA
- Model Number: RT-2
- Minimum Order Quantity: 1 Unit/Units
- Price: FOB USD 46000~86000/sets
- Packaging Details: Vacuum packing in wooden case
- Delivery Time: 15-30days
- Payment Terms: L/C, T/T
- Supply Ability: 50 Unit/UNits per month

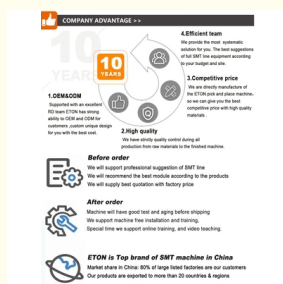


Product Specification

- Dimension (L*W*H): 1200*1930*1500mm
- Total Weight: 2500kg
- PCB Length Width: Max:450*330mm Min:80*80mm
- PCB Thickness: 0.1-6mm(If<0.6mm Need Jig)
- PCB Clamping: Pneumatic
- No.of Feeders Station: 64 PCS
- No.of Head: 20 PCS
- Mounting Speed: 80000 CPH
- Power: AC 380 V
- Operating Environment: 6KW



More Images



Product Description

LED automatic assembly machine led bulb production line / assembly machine

The machine is introduced

1. This is multifunctional machine with double module, total 20 head, each part 10 head, can produce two types of products at the same time.
2. The X axis is magnetic liner motor, Y axis and Z axis is servo motor, very good performance and high accuracy.
3. It's intelligent, can produce different types of LED light and electric board, such as bulb, strip, Panel, Downlight, streetlight, power driver, other electronic boards, etc
4. Its high precision (accuracy), apply to LED chips, resistor, capacitor, IC, shaped components etc.
5. It is highspeed machine, the optimum speed is 80000CPH

Dimension (L*W*H)	1200*1930*1500mm
Total weight	2500kg
PCB Length width	Max:450*330mm Min:80*80mm
PCB thickness	0.1-6mm (If < 0.6mm need jig)
PCB clamping	pneumatic
No. of feeders station	64 PCS
No. of head	20 PCS
Mounting speed	80000 CPH
Power	AC 380 V
Operating environment	6 KW



New Design Moulder



RT-2

80000 CPH

- PCB Size(mm): 80*80-450*300
- Placement Head: 20 PCS
- Camera Feature: Vision alignment,
- Mark correction
- No. of feeder station: 68 PCS
- Mounting components: LED chip/capacity/resistors/IC/shaped components, etc



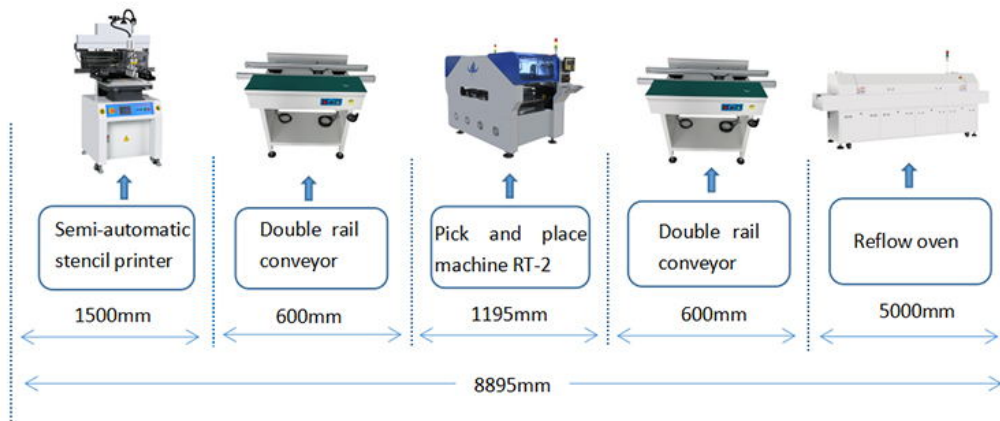
What is smt device

The so-called SMT is both surface assembly technology (surface mount technology) (abbreviation of Surface Mounted Technology), and is currently the most popular technology and process in the electronic assembly industry. The SMT equipment refers to the machines and equipment used in the SMT processing process. The most basic equipment includes: fully automatic printing machine, placement machine, and multi-temperature reflow soldering.

We provide smt production line

ETON manufacturer can provide whole smt line machine for different products, like the tube, bulb, flexible strip, DOB, display, lens, panel light, downlight, electric board, etc.

ETON RT-2 Semi-automatic Production Line



SMT Full Solution LED Light Production Line



LED Bulb



LED Tube



LED Strip



LED Lens



Power Driver



PCB Loader



Automatic Stencil Printer



SPI



Pick&Place Machine



AOI



Lead-free Reflow Oven



PCB Unloader

SMT equipment operator job responsibilities

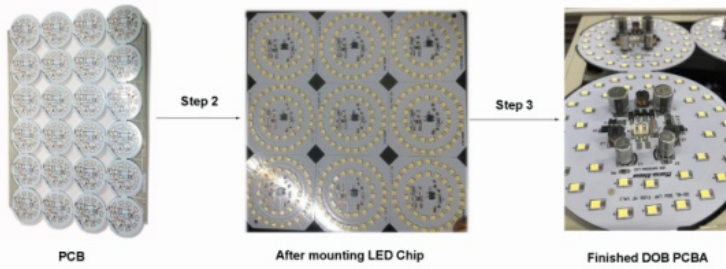
1. According to the squad leader's transfer plan, make pre-production preparations in advance, such as materials, solder paste, steel mesh, etc.;
2. According to the squad leader's arrangement, do a good job of PCB printing and post-printing inspection;
3. Strictly implement the solder paste / red glue storage and use control process;
4. Strictly implement steel mesh cleaning specifications;
5. In the production process, it is responsible for loading, refilling, and matching of the machine, filling in the refilling record form and sealing the sample, and notifying IPQC to confirm the loading and refilling;
6. Confirmation of the first piece of production, whether there are missing stickers, reverse, etc., fill in the first piece and send the inspection form to notify IPQC to confirm the first piece again;
7. After the first item is confirmed by IPQC, it must be confirmed whether the furnace temperature is the product temperature before passing the furnace, and whether the furnace temperature is normal;
8. After the production of the model is completed, remove all the materials on the equipment, return the materials to the material storage area of the SMT workshop according to the bill of materials, and fill in the replenishment list (material code, material model, quantity, etc.) required for the missing product And return the process documents, BOM and other production materials used in the production process to the monitor;
9. After the shift, do the daily maintenance of the equipment, clean and sanitary, bulk materials search, and make related reports;
10. Complete other tasks arranged by the leader.

Main process of SMT Line for DOB manufacturing

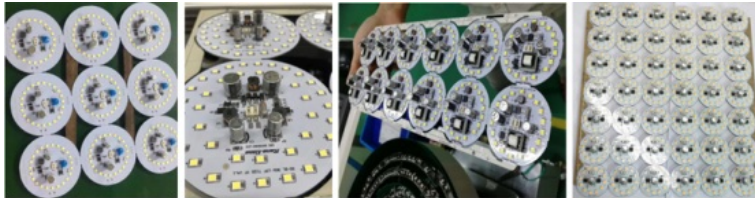
Step one: Print Solder paste on PCB

Step two: Mounting LED chip and capacitor big components on PCB.

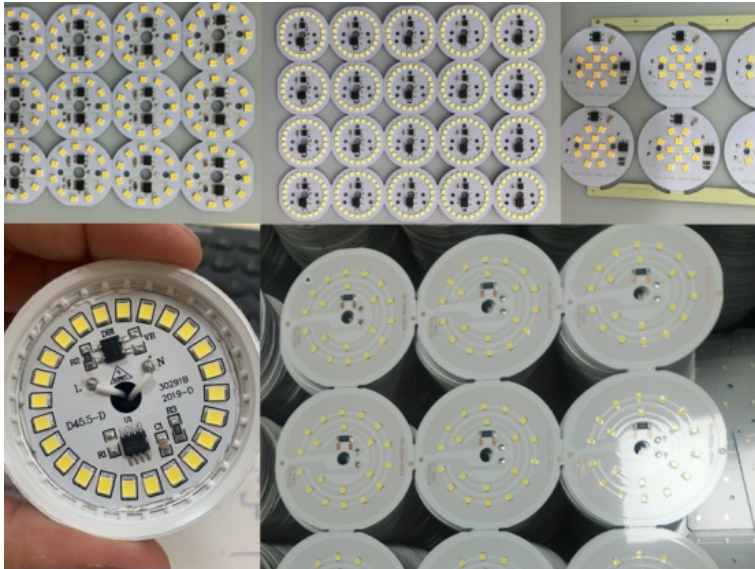
Step three: Heating solder paste with PCB to welding together the component with PCB.



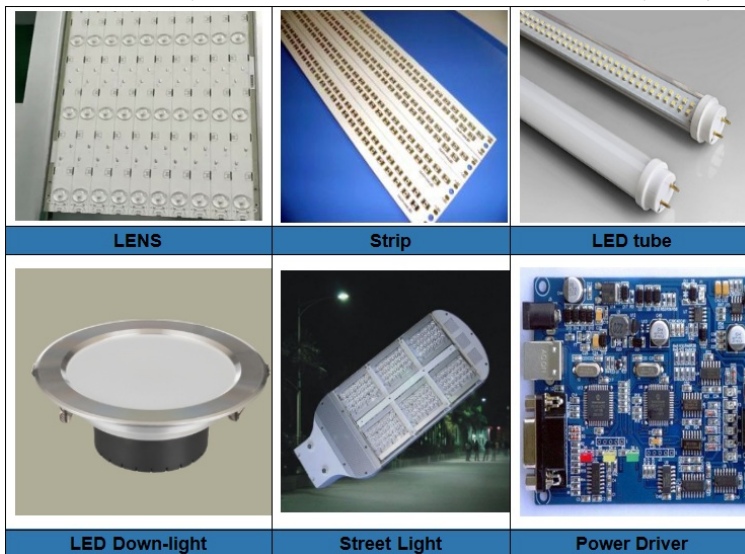
Different type of DOB PCBA



The PCBA of Linear bulbs



RT-1 SMT line not only suitable for DOB and bulb, but also suitable for many other products, such as:



Shenzhen Eton Automation Equipment Co., Ltd.



0086 136/0197/25 (Whatsapp/Wechat)



linda@eton-mounter.com



smtmountingmachine.com

HENGFENG INDUSTRIAL AREA,ZHOUSHI ROAD NO. 739,HEZHOU COMMUNITY,HANGCHENG
STREET,BAOAN,SHENZHEN,CHINA