



SMT LED Pick And Place Machine 12heads Multifunctional Capacity Reach 45000PCH

Our Product Introduction

for more products please visit us on smtmountingmachine.com

Basic Information

- Place of Origin: China
- Brand Name: ETON
- Certification: CCC, CE, SIRA
- Model Number: HT-E8S-1200
- Minimum Order Quantity: 1 set
- Packaging Details: vacuum package, wooden case
- Delivery Time: 30 days
- Payment Terms: T/T
- Supply Ability: 50 sets/month



Product Specification

- Name: SMT Pick And Place Machine
- Dimension: 2550*1650*1550mm
- Weight: 1500kg
- Application: SMT Production Line
- Applicable Components: 0402
- Power Supply: 380AC 50HZ
- Mounting Speed: 45000cph
- Warranty: 1 Year
- Highlight: LED pick and place machine 45000PCH, 12heads LED pick and place machine, smt pick and place machine CCC



More Images



Product Description

Multifunctional capacity reach 45000PCH 12heads LED smt pick and place machine

Mounter Introduction

Pick and place machine, also known as "Mounter" and "surface mount system", is a kind of equipment configured after dispensing machine or screen printing machine. It is a kind of equipment that accurately places surface mount components on PCB pad by moving the mounting head. It is used to realize high-speed and high-precision placement of components. It is the most critical and complex equipment in the whole SMI and production.

Features

Mounting components: LED chip, resistor, capacitor, IC, lens, shaped components, etc.

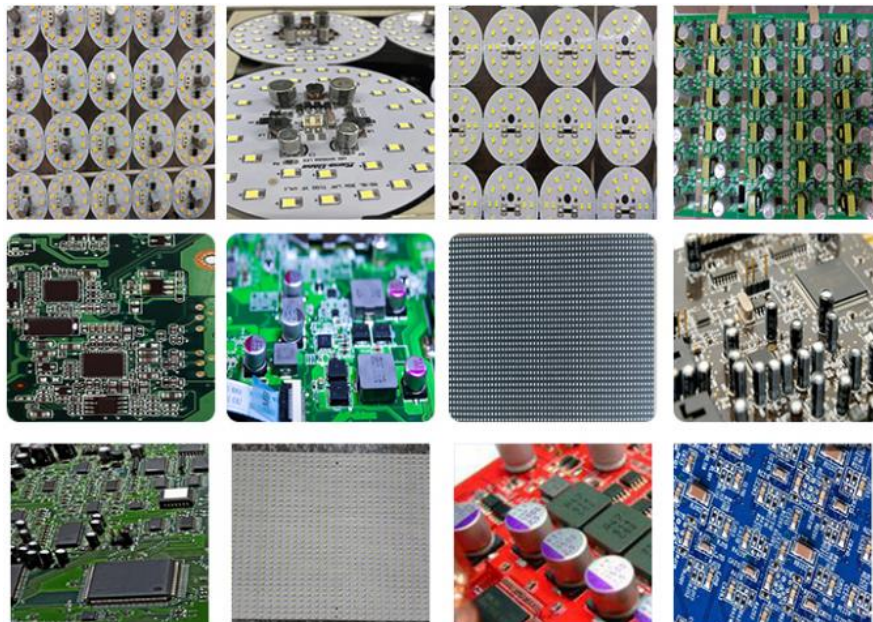
Component: min.size 0402 max.height 15mm

Application: power drive, electric board, lens, DOB, linear bulb, household appliance, etc.

Machine parameter

PCB length width	Max 1200*500mm min 80*80mm
PCB thickness	0.5~5mm
PCB clamping	Adjustable pressure pneumatic
Camera	2 sets of imported camera
Components space	0.2mm
Conveyor transmission	1200mm
Power	380AC 50HZ
Feeding way	Electric feeder with double motor

Application



SMT production line

The semi-automatic production line is mainly composed of semi-automatic printing machine, pick and place machine, reflow oven and conveyor.

We can provide a whole production scheme and equipment for you.



package

1.our mahcine are packed in vacuum wooden cases, in order to prevent chemical reaction with some components during transportation, so as to better protect th e machine itself.

2.the salesman tracks the delivery process and records the whole loading process to ensure no error in loading.

3.after loading, when the goods arrive at the port, we will cooperate with the forwarder to do customs clearance procedures.



Service

Our Best Service



Besides, we have local office and engineers in Eypet, India, Damman etc.
we can provide 1-2 times free repair for machine after warranty.
we can provide you professional advice.

FAQ

Q: Why do you choose our product?

our product quality is guaranteed, and we have overseas local engineers, can arrange door to door installation.

Software lifetime free upgrade

Free installation and training

Provide 1-2 times a year free for machine repair, after the warranty period.

Q:What is the difference between semi-automatic production line and full-automatic production line?

A:In short, fully automatic production lines are expensive, but require less labor. Semi-automatic production line is more affordable, but the labor will be more than the automatic line

Q: This is the first time I use this kind of machine, is it easy to operate?

A: There is English manual or guide video that show you how to use machine. If you still have any question, please contact us by e-mail/ Skype/ phone/ wechat/ online service. As soon as you buy our machine, we will arrange engineers come to your factory for free install and train, until you learn to operate it.

Q:How can we buy from us?

A: Pick and place machine, smt production line, stencil printer, reflow oven, load/unload machine, feeder,nozzle,etc.



Shenzhen Eton Automation Equipment Co., Ltd.



0086 13670197725 (Whatsapp/Wechat)



linda@eton-mounter.com



smtmountingmachine.com

HENGFENG INDUSTRIAL AREA,ZHOUSHI ROAD NO. 739,HEZHOU COMMUNITY,HANGCHENG
STREET,BAOAN,SHENZHEN,CHINA