



Black And White Automatic Smt Pick And Place Machine Min Mount 0201mm Components

Our Product Introduction

for more products please visit us on smtmountingmachine.com

Basic Information

- Place of Origin: China
- Brand Name: ETON
- Certification: CE, CCC, SIRA
- Model Number: YT101S
- Minimum Order Quantity: 1 set
- Packaging Details: vacuum adsorption, wooden packing
- Delivery Time: 30 days
- Payment Terms: T/T
- Supply Ability: 50 sets per month

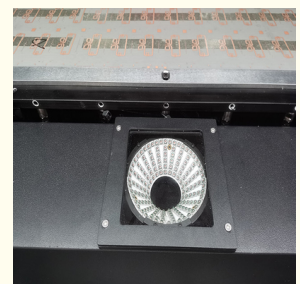
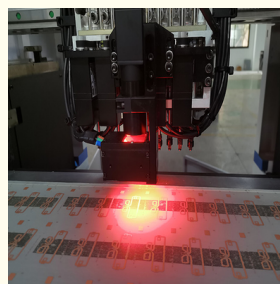
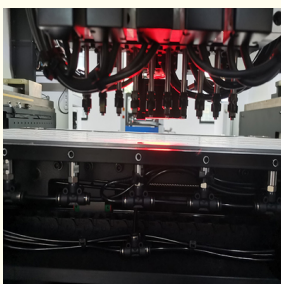


Product Specification

- Warranty: 1 Year
- Condition: New
- Applicable Components: 0201
- Mounting Speed: 40000 CPH
- Pcb Thickness: 0.5-4.5 Mm
- Dimension: 2154*1376*1762mm
- Highlight: 0.02mm smt pick and place machine,
10pcs head smt pick and place machine,
0201mm components smt mounter Machine



More Images



Product Description

Automatic smt pick and place machine Min.mount 0201mm components smt mounter


Main parameter of machine

PCB size	Max.size 500*350mm Min.size 50*50mm
PCB thickness	0.5-4.5mm
Repeat precision	±0.02mm
Mounting height	≤20mm
Mounting speed	40000CPH
Components range	Min 0201-40*40mm packages and IC etc
No.of head	10pcs
Feeding way	Intelligent Double head feeder

Machine feature

- *Brand new self-developed high-precision placement head.
- *High-speed precision head flight vision camera capture the image of placement accordingly,improve the speed and accuracy of placement.
- *The placement head adopt independent vacuum detection,improve placement performance.
- *Off-line programming,save time of changeover cycle.
- * Software AI intelligent learning function and automatic optimization function.

ETON profile



ETON GROUP

ABOUT US

Shenzhen ETON Automation Equipment Co.,Ltd. was founded in 2011. ETON is the leading manufacturer of global optoelectronic highspeed pick and place machine,Full SMT line. the products are exported to more than 20 countries and regions, including South Korea,India,Vietnam,Tunisia,Egypt, Turkey,Russia,Brazil etc.

Testing workroom

Exhibition

ETON industrail park

ETON mission: professionalism, excellent technology, sharing results.

ETON goal: to create a national brand and build an international Chinese enterprise.

ETON purpose: to create value for customers and create benefits for the society.

ETON vision: determined to become the world's most competitive manufacturer and service provider of pick and place machine and high-end electronic testing equipment.

Certificate

We got 9 invention patents, 112 practical patents,12 software patents.

Patent number: ZL 2011 2 0237740.9 ZL 20 11 2 0334606.0

ZL 2012 2 0178869.1 ZL 2012 2 0415505.0

ZL 2012 2 0415044.7 ZL 2012 2 0415356.8

ZL 2012 2 0415061.0



Service

We can provide you with excellent service, we also have professional overseas engineers to your factory provide install, training service until you can operate the machine adroitly.

1. We can provide you with the whole production line.
2. Our software is R&D independently. We can offer software upgrade for lifetime for free
3. We have 50,000 square meters of industrial park. The production strength is abundant, occupies the first place in the domestic profession.
4. If you have any problem with the product, we will have overseas engineers come to your home for free repair or replacement within one year. Because we have offices overseas and local engineers.



FAQ

Q: Do you have oversea after sale service?

A: We can provide technical support abroad. If you have any technical problems, our engineers will provide you with timely support. Abroad, we have India office, Indian engineer, Jerusalem office, engineer, Egyptian engineer, etc.

Q: How is the training?

A: After purchasing our machines, you can send your engineers to our factory, or we send our engineers to your factory, and then we will train your personnel to operate these machines. Online training and video tutorials. During the epidemic, if our engineers can't make it through, we also have special one-on-one online training and video tutorials..

Q: It's hard to use the machine?

A: Machine is very intelligent and easy to operate, like the intelligent phone, also the software is made by our company, so we know how to make it more intelligent and operate friendly.

Q: How long is the time of delivery?

Generally, the test delivery period is one month.

Q: If my order is very urgent, how long you can proceed?

We have helped many clients with their urgent demand. If your order is urgent, please check with our specialists to see if we can help.





0086 13670197725 (Whatsapp/Wechat)



linda@eton-mounter.com



smtmountingmachine.com

HENGFENG INDUSTRIAL AREA,ZHOUSHI ROAD NO. 739,HEZHOU COMMUNITY,HANGCHENG
STREET,BAOAN,SHENZHEN,CHINA