



High Precision LED Bulb Pick And Place Machine 80000CPH For 0201 Components

Our Product Introduction

for more products please visit us on smtmountingmachine.com

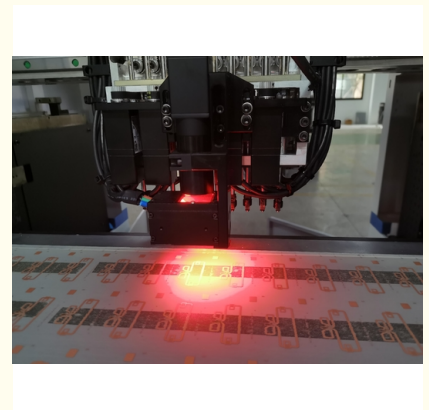
Basic Information

- Place of Origin: China
- Brand Name: ETON
- Certification: CE,CCC,SIRA
- Model Number: YT-202S
- Minimum Order Quantity: 1 Set
- Price: USD 73,000.00/ 1Unit/Units
- Packaging Details: Filming packing、 vacuum packing、 wooden packing
- Delivery Time: 30 work dayes
- Payment Terms: L/C, T/T
- Supply Ability: 50 Sets per month



Product Specification

- Dimension: 2788*1686*1375mm
- Weight: 1700kg
- PCB Size: Max Size:500*450mm(single PCB)
500*300mm(double PCB) Min Size:50*50mm
- PCB Thickness: 0.5-4.5mm
- Mounting Height: ≤20mm
- Mounting Precision: ±0.02mm
- No.of Camera: 4 PCS
- Components: 0201~40*40mm Tape Reel Packages And IC Tray Feeder Etc.
- Mounting Speed: 80000CPH
- No. Of Feeders Station: Double Side:32PCS Single Side:16PCS
- No. Of Head: Double Side 20pcs(single Side:10pcs)
- Feeding Way: Intelligent Double Head Feeder
- Highlight: **Precision LED Pick And Place Machine, Pick And Place Machine 80k CPH,**



More Images



Product Description

LED Bulb Pick And Place Machine Apply 0201 components 80000CPH

Machine description:

- 1.YT 202S is one of the newly launched YT series products from ETON. The dual-module placement machine can produce two identical PCB boards at the same time, improving production efficiency.
- 2.Under optimal conditions, the production capacity can reach 80000CPH, and the precision is very high, and the minimum mounted components can reach 0201.

Machine Picture:



Machine Feature:

1.Machine head:

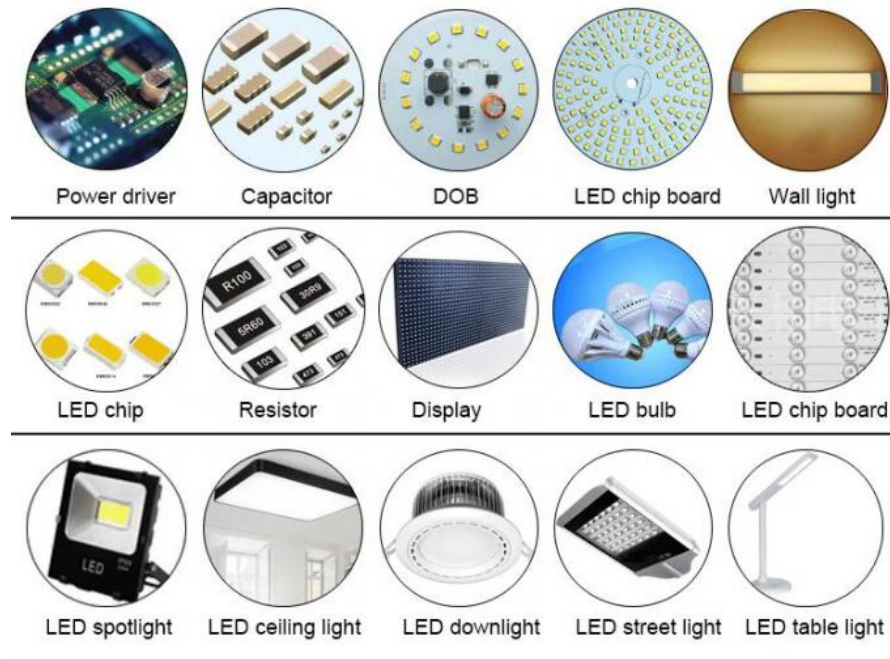
- (1).This machine adopted High-speed multi modular head(NON replace modular head),apply to ultra small chip 0201~40*40mm large chip,wider component range.
- (2).It equipped with 20 heads, Each placement head with independent detection function,which improves the stability of the equipment and the reliability of the product.
- (3).Adopt High-end magnetic linear motor,servo system and multi function modular head, the optimum placement speed reach 80000 CPH.

Machine main parameter:

Model	YT202S
Dimension(L*W*H)	2788*1686*1375mm
Weight	1700kg
PCB length width	Max size:500*450mm(single PCB) 500*300mm(double PCB) Min size:50*50mm
PCB thickness	0.5~4.5mm
Mounting height	≤20mm
Mounting precision	±0.02mm
No.of camera	4 PCS Bottom vision camera recognition Vision alignment, Mark correction
Components	0201~40*40mm Tape reel packages and IC tray feeder etc.
Optimum mounting speed	80000CPH
No. Of feeders station	Double side docking cart slot:32PCS ,Tape reel packages:64pcs (Single side docking cart slot:16PCS ,Tape reel packages:32pcs)
No. Of head	Double side:20pcs(single side:10pcs)
X,Y Axis drive way	High-end magnetic linear motor+Servo motor
Feeding way	Intelligent Double head Feeder

The application of Pick and Place Machine YT-202S

Apply to 0201~40*40mm tape reel package and IC tray feeder.



Exhibition:



ETON is a very strong and powerful company. We attend many exhibitions every year.

Not only in China, India Delhi, Indian Mumbai, Pakistan Karachi, Turkey Istanbul, Egypt Cairo, Russia Moscow, Vietnam Hanoi etc.

We occurred 85% percent in China LED lighting markets, but also send machines to India, Korea, UK, Russia, Egypt, Turkey, Vietnam, Japan, Australia, Poland, etc more than 20 countries.

Working with ETON is guaranteed, let's light up your business!

ETON is committed to building an international brand, dominated by SMT machines, to show the word the technological strength of our brand, and to show the quality of our machines on a global scale. In the past, we have participated in many LED lighting exhibitions and professional equipment exhibitions in India, Vietnam, Thailand, Turkey, Egypt and other countries.

Services:



ETON serve you the best services

24h 24 hours online services

Up-grade free in life

Solve your problems on line

Delivery time is 30 days

**Have official site in India, Egypt
for free install and training**



Maintenance period 1 year
One year warranty, during warranty, any parts need to be repaired and replaced will be free.
Software and hardware lifetime maintenance
Free upgrade software, software is Reach and develop by ETON, so we support whole lifetime free upgrade updates.
Visit customers regularly and gather information
Visit clients regularly. We attend different exhibition in different cities every year, at the same time, we will visit local clients and support our service and collect and feedback customer suggestions in time.
Provide latest information about technology and equipment
We give professional technology suggestion with our clients. And share the updates news to our clients

FAQ:

1. Q:What are your advantages?

A: Our company stick to five level management policy: sincere business, focus on R&D, manufacturing intentions, considerate service, customer trust.

2. Q: If my order is very urgent, how long you can proceed?

A: We have helped many clients with their urgent demand. If your order is urgent, please contact with our specialist and we will help you to apply special support.

3. Q:If machine have any problem after I receive it, how can I do ?

A:We will send Free parts send to you in machine warranty period,and our engineers will visit to your factory help you to solve your machine's problem.

4. Q:Why choose us?

A: We provide professional in SMT line for 11 years,with strong production and strong capacity and R&D team,Has provided a lot of clients with modern SMT production line solutions.

5. Q: What about the shipping methods?

A: A variety of transportation methods for you to choose. By sea, air and road.



Shenzhen Eton Automation Equipment Co., Ltd.



0086 13670197725 (Whatsapp/Wechat)



linda@eton-mounter.com



smtmountingmachine.com

HENGFENG INDUSTRIAL AREA,ZHOUSHI ROAD NO. 739,HEZHOU COMMUNITY,HANGCHENG
STREET,BAOAN,SHENZHEN,CHINA