



## Multifunctional Pick And Place Machine SMT Chip Mounter For Driver Board / Lens / Power Driver

### Our Product Introduction

for more products please visit us on [smtmountingmachine.com](http://smtmountingmachine.com)

#### Basic Information

- Place of Origin: CHINA
- Brand Name: ETON
- Certification: CCC,SIRA,CE
- Model Number: HT-E8D-1200
- Minimum Order Quantity: 1PCS
- Packaging Details: WE USE VACUUM WOODEN BOC PACKAGE
- Delivery Time: 5-8 work days
- Payment Terms: L/C, T/T
- Supply Ability: 50PCS/Month



#### Product Specification

- Model: EHT-E8D-1200
- Warranty: 1 Year,12 Months
- Name: SMD Chip Mounter,SMT Pick And Place Machine,SMT Chip Mounter
- Application: SMD Production Line,SMT Mounting Shooter Machine,SMT Production Line,for SMT Machine
- Power Supply: 380V 50HZ
- Condition: 100% Original,Brand-new
- Product Name: Place Machine\ LED Mounter\LED Assembly Machine,Automatic SMT Mounting Shooter
- Weight: 2500KG
- Mounting Speed: 90000 CPH
- Type: Automatic
- Usage: Circuit Board Assembly,SMT Mounting Machine,SMD,LED
- Dimension: 2150\*2250\*1650mm



## Product Description

**Multifunctional pick and place machine in SMT for driver board,lens,power driver.**

### Technical parameter

Model:E8D-1200  
 Dimension:3150\*2250\*1650mm  
 Total Weight:2500kg  
 PCB Length Width:Max:1200\*300mm Min:100\*100mm  
 PCB Thickness:0.5-5mm  
 PCB Clamping:Adjustable pressure pneumatic  
 Mounting Mode:Group picking and separate placing  
 No. of Camera:4pcs  
 Mounting Precision:±0.04mm  
 Mounting Height:<15mm (Automatic Changing)  
 Mounting Speed:90000 CPH  
 Components:LED , capacitors, resistors, IC,shaped components, etc.  
 Components Space:0.2mm  
 No. of Feeders Station:48pcs  
 No. of nozzles:24pcs  
 Power:380AC 50HZ  
 Power Consumption:8 KW  
 Conveyor transmission:Max length :1200 mm  
 Transmission Speed: 1000mm/sec



### Related machine

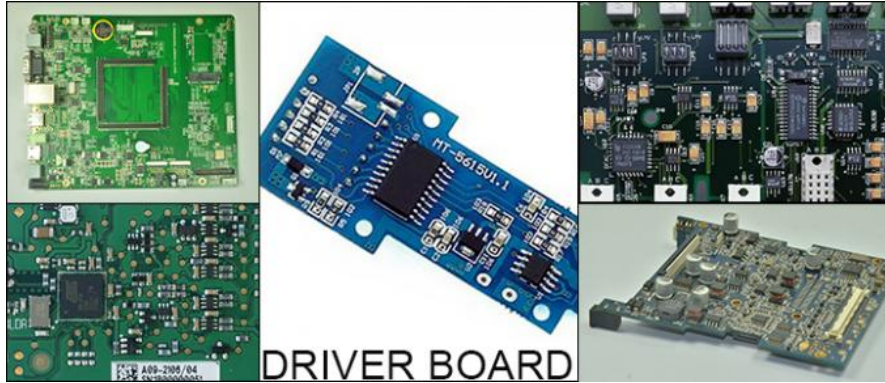
Stencil printer



Automatic printing machine constitute and features  
 PCB transport and clamping system

- The optimally designed module drive structure effectively improves the stability of the platform calibration,balanced contact between the PCB and the steel mesh.
- Adopt flexible side clamps and segmented supports to effectively clamp the PCB to ensure a fully
- Programmable transport speed control makes PB stop more precise.
- Unique crafted internal gear conveyor belt to prevent jamming.
- The PCB loading direction can be selected and combined freely.

#### Driver board



Motor driver is a device used to control and power the motor, it is a closed cube, which includes Motor Control Board and Motor Drive Board two parts, motor control board above including the main control chip, PWM output circuit, filter circuit, encryption chip and other parts, Motor Drive Board part including inverter part, power conversion part (including rectifier part, power protection part, discharge part, etc.) , current sampling section (digital sampling chip or resistance sampling, etc.) , communication section, and so on. From the hardware level, is a master control chip. Of course, some people like to call the motor drive this whole Motor controller, others like to call the Motor Control Board Motor Drive.

#### FAQ

Q:which kind of raw material should i prepared for SMT line?

A:you need to prepared mainly include:PCB, Solder paste, Components, Feeders, Nozzles etc.

Q:Can i visit the production site of your machines in India?

A:i have to ask my client. After all,this is our customer's factory.we cant not make decisions for my clients. I think that you wouldn't want your competitors visit your manufacturing site.please understand.



**Shenzhen Eton Automation Equipment Co., Ltd.**



0086 13670197725 (Whatsapp/Wechat)



[linda@eton-mounter.com](mailto:linda@eton-mounter.com)



[smtmountingmachine.com](http://smtmountingmachine.com)

HENGFENG INDUSTRIAL AREA,ZHOUSHI ROAD NO. 739,HEZHOU COMMUNITY,HANGCHENG STREET,BAOAN,SHENZHEN,CHINA