



## 1.2m tube/flexible making machine group picking and group placing pick and place machine

### Our Product Introduction

for more products please visit us on [smtmountingmachine.com](http://smtmountingmachine.com)

#### Basic Information

- Place of Origin: CHINA
- Brand Name: ETON
- Certification: CE, CCC, SIRA
- Model Number: HT-F7S
- Minimum Order Quantity: 1 set
- Packaging Details: vacuum adsorption, wooden packing
- Delivery Time: 30 days after receive the down-payment
- Payment Terms: T/T
- Supply Ability: 50 sets per month



#### Product Specification

- Name: Pick And Place Machine
- Module: HT-F7S
- Brand: ETON
- Warranty: 1 Year
- Condition: New
- Mounting Speed: 150000-180000 CPH
- Pcb Thickness: 0.5-5 Mm



#### More Images



## Product Description

### 1.2m tube/flexible making machine group picking and group placing pick and place machine

#### Technical parameter

HT-F7S pick and place machine	
Length* Width* Height	2700mm*2300mm *1550mm
Total weight	1700kg
PCB Size	Max:1200*330mm Min:100*100mm
PCB Clamping	Adjustable pressure pneumatic
Software	R&D independently
No. of camera	5PCS(Digital camera)
Features of camera	Vision alignment, Mark correction
Mounting speed	150000-180000CPH
Components	LED3014/3020/3528/5050, capacitors, resistor, bridge rectifiers, etc
No. of feeders station	68PCS
No. of nozzles	34PCS
XYZ Axis drive way	High-end magnetic linear motor + servo motor
Feeding way	Electric feeder with double motor

#### Features

Suitable for max PCB size is 1200\*330mm.

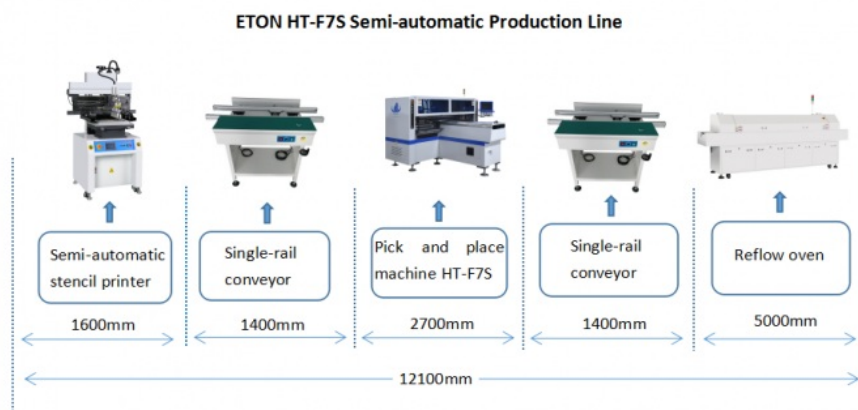
PCB clamping adopt unique design, adjustable pressure pneumatic.

F7S as the high speed machine with 170000 CPH, the mounting mode is group picking and group mounting, feeding missing components automatically.

Camera functions: there are 5 sets of imported camera for vision alignment and mark correction.

1 set motion control card module, it is independent research and development by ETON

#### SMT line



Solder paste printer machine: The solder paste is Stencil printed on the PCB board through the Stencil of the printer.

Pick and place machine: Mount the electronic component at the specified position on the PCB.

Reflow oven: Melt the solder paste and fix it to the mounting element.

Single conveyor: Inspect the quality of assembly and welding to cushion the production line.

#### Packaging

Step 1. Film packaging

Prevent the machine from dust ,water,crash and shaking.

Step 2. Add foam+film packaging

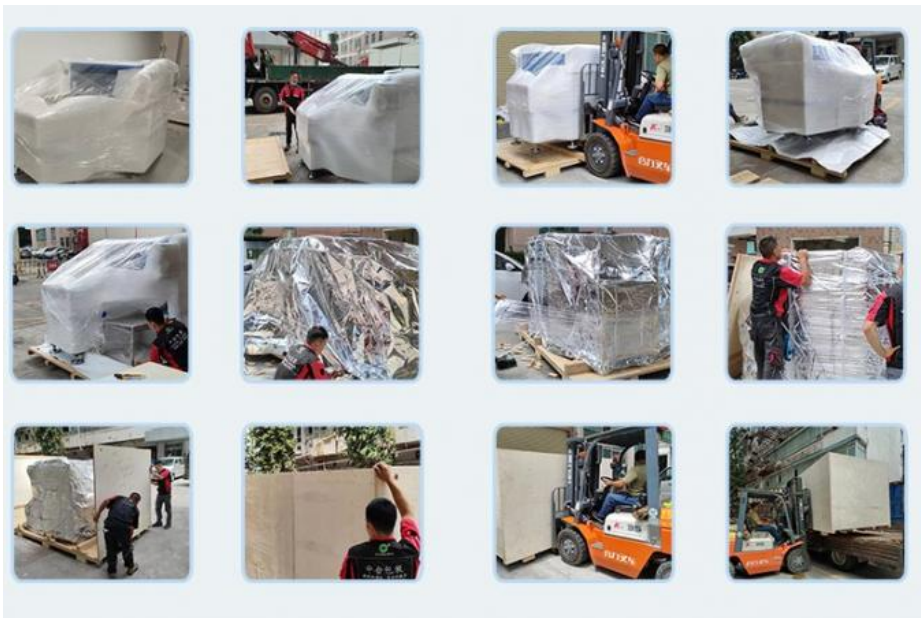
Double safe protection,Prevent the machine from crash and shaking.

Step 3. Unique tin foil packaging

Add tin foil packing can prevent the film from scratch broken.

Step 4. customized Strong wood carton packing

The customized strong wood packing for ocean ship,The machines are fix oi in the wood carton, effectively prevent collision and shock.



### Service

#### 1. Before order:

We will support professional suggestion of SMT line  
 We will recommend the best module according to the products  
 We will supply best quotation with factory price

#### 2. After order:

Machine will have good test and aging before shipping  
 We support machine free installation and training, special time we support online training, and video teaching.  
 We have Professional after-sales team, could solve problem as soon as possible  
 Machine warranty is one year, during warranty, any parts need to be repaired and replaced will be free for clients.

### FAQ

Q: Is it hard to use these machines?

A: No, not hard at all. For our previous clients, at most 2 days is enough to learn to operate the machines.

Q: Can you provide a whole line solution?

A: Yes, we can .We can supply SMT line and LED production line.

Q: How can I get to know you better?

A: You can have a specific understanding of our company through our company's official website. After the epidemic, you can come to our company to know offline under safe conditions. Off-line can make you have a deeper impression on our company.



**Shenzhen Eton Automation Equipment Co., Ltd.**



0086 13670197725 (Whatsapp/Wechat)



[linda@eton-mounter.com](mailto:linda@eton-mounter.com)



[smtmountingmachine.com](http://smtmountingmachine.com)

HENGFENG INDUSTRIAL AREA,ZHOUSHI ROAD NO. 739,HEZHOU COMMUNITY,HANGCHENG STREET,BAOAN,SHENZHEN,CHINA