



Shenzhen Eton Automation Equipment Co., Ltd.  
smtmountingmachine.com

## High Precision SMT Pick And Place Machine 20 Heads 80000CPH

### Our Product Introduction

for more products please visit us on [smtmountingmachine.com](http://smtmountingmachine.com)

#### Basic Information

- Place of Origin: CHINA
- Brand Name: ETON
- Certification: CCC,SIRA,CE
- Model Number: YT202S
- Minimum Order Quantity: 1PCS
- Packaging Details: We use vacuum wooden box packaging
- Delivery Time: 5-8days
- Payment Terms: L/C, T/T
- Supply Ability: 50pcs/month



#### Product Specification

- Model: YT202S
- Length: 2788mm
- Width: 1686mm
- Height: 1375mm
- Total Weight: 1700kg
- Mounting Speed: 80000CPH
- Highlight: Windows Pick And Place Machine, SMT pick place machine 80000CPH, 20 heads SMT pick place machine



#### More Images



## Product Description

### 20 heads 80000CPH high precision SMT pick and place machine

#### Parameter

|                                  |   |
|----------------------------------|---|
| model                            | YT 202S   |
| PCB size                         | MAX size: 500*450mm(single PCB)<br>500*300MM(double PCB)<br>MIN size: 50*50mm   |
| PCB thickness                    | 0.5-4.5mm   |
| PCB clamping                     | Cylinder clamping, track width adjustable   |
| rail                             | 2 rail, 2 gantries( rail 1,4 are fixed rail)  |
| system                           | Windows 7   |
| software                         | R&D independently   |
| Production management MES system | Customized(option)  |
| Off-line programming             | available   |
| No. Of camera                    | 4 set (digital camera)<br>Bottom vision camera recognition<br>Vision alignment+ mark correction   |
| Repeat precision                 | <b>±0.02mm</b>  |
| Mounting height                  | ≤20mm   |
| Mounting speed                   | 80000 CPH(optimum speed)  |
| Components range                 | Min 0201-4040mm tape reel packages and IC tray feeder etc   |
| power                            | 380 AC 50Hz 6KW   |
| Operation environment            | <b>23 ±3</b>  |
| Transmission direction           | Standard: single direction  |
| Transmission mode                | Online drive  |
| Position mode                    | optical   |
| Air consumption                  | 0.4-0.6mpa()4-6kgf/cm <sup>2</sup> ) 150N/min   |
| Electrical control               | Independent research and development by ETON  |
| Motion control card module 1 set | Independent research and development by ETON  |
| X,Y,Z Axis drive way             | High end magnetic linear motor+ servo motor   |
| No. Of feeder station            | Double side docking cart slot 32 PCS, tape reel packages : 64PCS(single side docking cart slot 16 PCS, tape reel package: 32PCS),freely switching between docking cart and IC tray feeder |
| No. Of heads                     | Double side: 20 PCS(single side: 10 PCS)  |
| Feeding way                      | Intelligent double head feeder  |

#### 1. Machine highlights

- (1)high speed multi modular head: apply to ultra small chip 0201-40\*40mm large chip,
- (2)improve recognition performance size up to 40\*40mm, apply to BGA 0R CSP etc.
- (3)each module 10 spindles, both high speed and intelligent with light compact design.
- (4) each placement head with independent detection function, which improves the stability of the equipment and the reliability of the product.
- (5)the capacity increased by 25% compared with traditional machine, optimum placement speed reach 80000 CPH.

#### 2. flexible production

- (1) components with size less than 40\*40 mm, or height less than 20mm can be used to high speed and high precision identification
- (2) high precision mark recognition system, adopt 3-color illumination recognition, apply to any shape mark and lens, wider range of applications.
- (3)docking cart, smart double head tape feeder, IC tray feeder

#### 3. high reliability

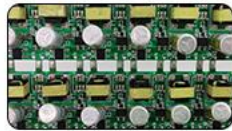
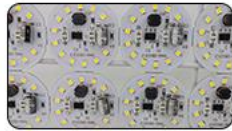
- (1)brand new self-developed high precision placement head
- (2)combine high accuracy, mark recognition camera with fixed flight vision camera, ensure placement accuracy
- (3)the placement head adopt independent vacuum detection improve placement performance
- (4)off-line programming, save time of changeover cycle
- (5)software AI intelligent learning function and automatic optimization function

#### 4. transmission system structure

- (1)two gantry, 10 spindles \* 2 gantry, total 20 spindles
- (2)flexible PCB handling capabilities, double rail, both gantry can mount the same large PCB at the same time, realizing flexible production
- (3)flexible wiring through modular placement heads and various production modes.



## YT202S



**APPLY TO 0201-40\*40mm tape reel package and  
IC tray feeder**

### Company advantages

ETON was established in 2011 with over 10 years experiences in high speed pick and place machine. We are the largest high-tech manufacturer in China with strong capability of design, R&D manufacture, sales & services. "High efficiency" "High quality" and "High Stability" are the core technology of ETON.

Strong production capacity, ETON have more than 50000 square meter Industrial park in Jiangxi Province, machine capacity more than 50 units/month



### Service

Maintenance period : 1 YEAR

Visit customers regularly and gather information

Provide latest information about technology and equipment

Overseas engineers teach equipment operation

### FAQ

1. Do you provide the complete production line machine?

Yes, of course. We provide the whole production line machine, including solder paste printer machine, conveyor, pick and place machine reflow oven.

2. What are the main appliance about the pick and place machine?

We have many different machine, and different machines apply to different appliance. The main products include bulb, tube, flexible strip, panel light, down light, street light, ceiling light, wall washer light etc.

3. How about the operation software language of the machine?

Our software are Independent R&D by ourselves with 2 language (English and Chinese).

4. What's the terms of payment?

T/T is OK. You can choose FOB Shenzhen.

5. Who are your main clients?

Our production have exported to more than 20 countries and regions, including South Korea, India, Egypt, Turkey, Russia etc.



**Shenzhen Eton Automation Equipment Co., Ltd.**



0086 13670197725 (Whatsapp/Wechat)



[linda@eton-mounter.com](mailto:linda@eton-mounter.com)



[smtmountingmachine.com](http://smtmountingmachine.com)

HENGFENG INDUSTRIAL AREA,ZHOUSHI ROAD NO. 739,HEZHOU COMMUNITY,HANGCHENG  
STREET,BAOAN,SHENZHEN,CHINA