



SMT Pick And Place Machine Double System Rail For LED Lights / PCB Driver

Our Product Introduction

for more products please visit us on smtmountingmachine.com

Basic Information

- Place of Origin: China
- Brand Name: ETON
- Certification: CCC CE SIRA
- Model Number: YT202S
- Minimum Order Quantity: 1 SET
- Packaging Details: Vacuum wooden box
- Supply Ability: 50 PCS/month



Product Specification

- Name: Pick And Place Machine
- Warranty: 1 Year
- Mounting Speed: 80000CPH
- Mounting Head: 20PCS Head
- Highlight: 0201 components LED Light Making Machine, Pick And Place Machine 20PCS heads, double rail LED Light Making Machine



Product Description

SMT pick and place machine with double system and rail for LED lights and PCB driver

Product description

Using high speed multi modular head, widely apply to ultra small components 0201~40*40 mm large components.

Two gantries, 10 spindles * 2 gantries, the optical speed could be reach 80000 CPH

Head independent vacuum detection function, improve equipment stability and reliability

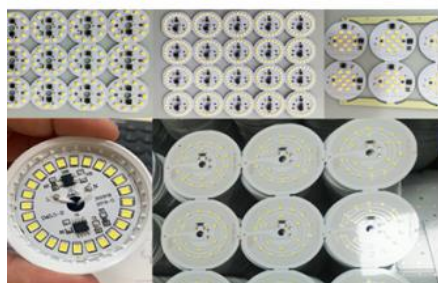
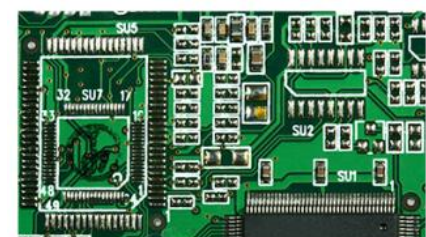
Equipped with high speed fly vision camera, quickly collect head image, powerful recognition performance, expand the size to 40*40mm, can recognize BGA or CSP ball grid array

Supports double side docking cart, IC tray feeder for hassle free switching and changeover.

Flexible pcb handling capabilities, double rail, both gantries for mounting one large pcb at the same time.

Parameter

PCB size	Max size:500mm*450mm(single PCB) 500mm*300mm(double PCB) Min size: 50mm*50mm
PCB thickness	0.5-4.5mm
PCB clamping	Cylinder clamping, track width adjustable
No. of camera	4 sets/Bottom vision camera recognition
Repeat precision	± 0.02mm
Mounting speed	80000CPH(Optimum speed)
Components range	Min 0201 ~40*40mm Tape reel packages and IC tray feeder etc.
Position mode	Optical



1. Support docking cart and IC tray feeder
2. The fastest speed can reach 80000CPH
3. 20 nozzles ,each has independent serve motor
4. Equip with high precision camera

Market share

Our products are exported to more than 30 countries & regions: Such as South Korea, America, Brazil, Britain, Italy, Germany, Spain, Turkey, Egypt, India, Russia, Spain, Algeria, Tunisia, Poland, Lithuania, South Africa, Iran, Vietnam, Pakistan, Saudi Arabia, Uzbekistan, Nigeria, etc.



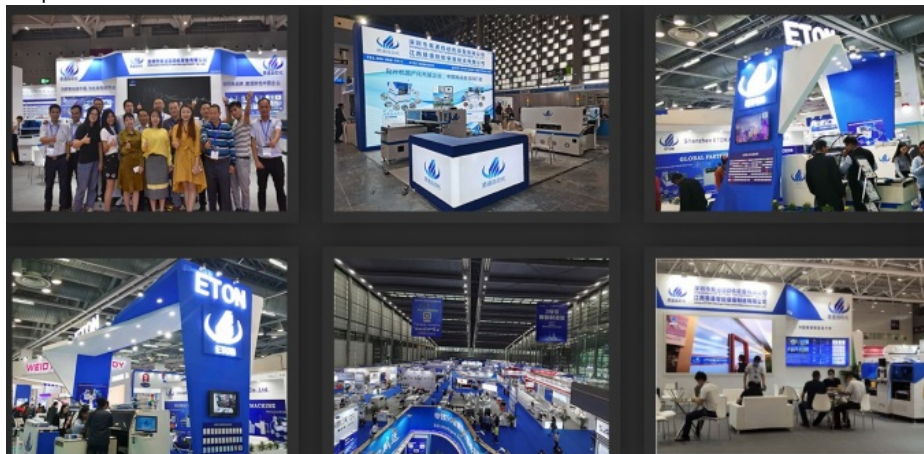
About us

Shenzhen ETON automation equipment Co., Ltd., established in 2011, is a manufacturer and process solution provider focusing on the R & D, production, sales and service of SMT high-speed mounter and SMT peripheral automation equipment, such as LED lamp mounter, automatic visual printer, automatic high-speed dispensing machine, etc. The products are easy to operate and the follow-up service is first-class. We have cooperated with many LED lamp manufacturers all over the world.



Exhibition

Our exhibitions mainly include India exhibition, Pakistan exhibition, Thailand Exhibition, Egypt exhibition, Turkey exhibition, etc. the following are the photos of the exhibitions we have participated in and the different LED lamp manufacturers we have cooperated with.



FAQ

Q1: Who are you?

A: We are Shenzhen ETON automation equipment Co., Ltd., the global leader of photoelectric high-speed mounter and the manufacturing supplier of SMT Mounter and peripheral equipment.

Q2: Why should I choose to buy from you instead of from other suppliers?

A: Choosing us has the advantages of products, R & D and technical consultants. We will try our best to help you solve your problems.

Q3: How do you guarantee product quality?

A: We have special departments for the purchase of parts and the control of product quality. Of course, your technical consultant will follow up in the whole process of production to ensure product quality.

Q4: What services will you provide when buying your products?

A: Free lifetime software upgrade, free training for your employees until they can master the machine, free replacement of parts during the warranty period, etc



Shenzhen Eton Automation Equipment Co., Ltd.



0086 13670197725 (Whatsapp/Wechat)



linda@eton-mounter.com



smtmountingmachine.com

HENGFENG INDUSTRIAL AREA,ZHOUSHI ROAD NO. 739,HEZHOU COMMUNITY,HANGCHENG
STREET,BAOAN,SHENZHEN,CHINA