



Shenzhen Eton Automation Equipment Co., Ltd.
smtmountingmachine.com

Min Mount 0201 Component DOB Bulb Mounter Windows 7 SMT Placement Equipment

Our Product Introduction

for more products please visit us on smtmountingmachine.com

Basic Information

- Place of Origin: CHINA
- Brand Name: ETON
- Certification: CE, CCC, SIRA
- Model Number: YT101S
- Minimum Order Quantity: 1 set
- Packaging Details: vacuum adsorption, wooden packing
- Delivery Time: 30 days after receive the down-payment
- Payment Terms: T/T
- Supply Ability: 50 sets per month

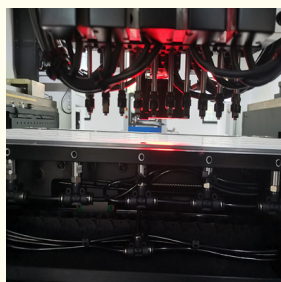


Product Specification

- Name: Pick And Place Machine
- Module: YT101S
- Min. Mount: 0201 Components
- Mounting Speed: Optimal Speed 40000CPH
- No.of Nozzle: 10PCS
- Local Service: India, Egypt, Vietnam
- Highlight: DOB bulb mounter,
DOB Bulb SMT Placement Equipment,
windows 7 SMT Placement Equipment



More Images



Product Description

DOB bulb mounter min. mount 0201 component windows 7 SMT placement machine

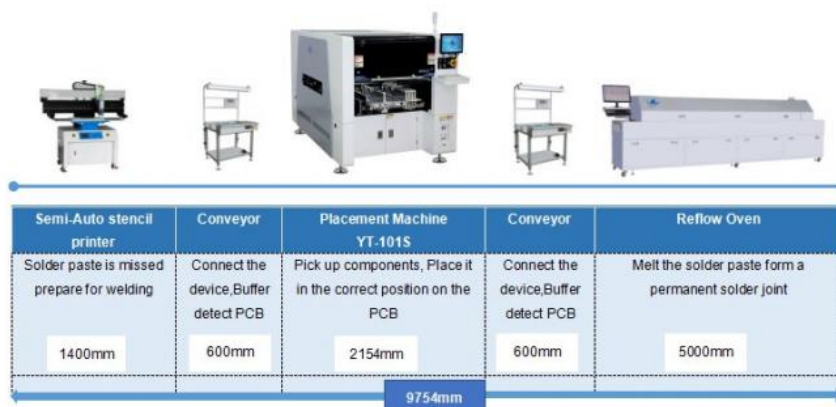
Main parameter of machine

PCB thickness	0.5-4.5mm
Repeat precision	±0.02mm
Mounting height	≤20mm
Mounting speed	40000CPH
Components range	Min 0201-40*40mm packages and IC etc
No.of head	10pcs
Feeding way	Intelligent Double head feeder

DOB Bulb making machine line

DOB Bulb making machine SMT Line is included stencil printer machine, conveyor, pick and place machine, reflow oven machine.

And this line is also not only suitable for making DOB, but also could be produce other led lighting, like the down-light, street light, panel light, driver board, etc.



YT101S Introduction

1. Placement head:

Brand new self-developed high-precision

2. Vacuum detection:

The placement head adopt independent, ensure high placement performance.

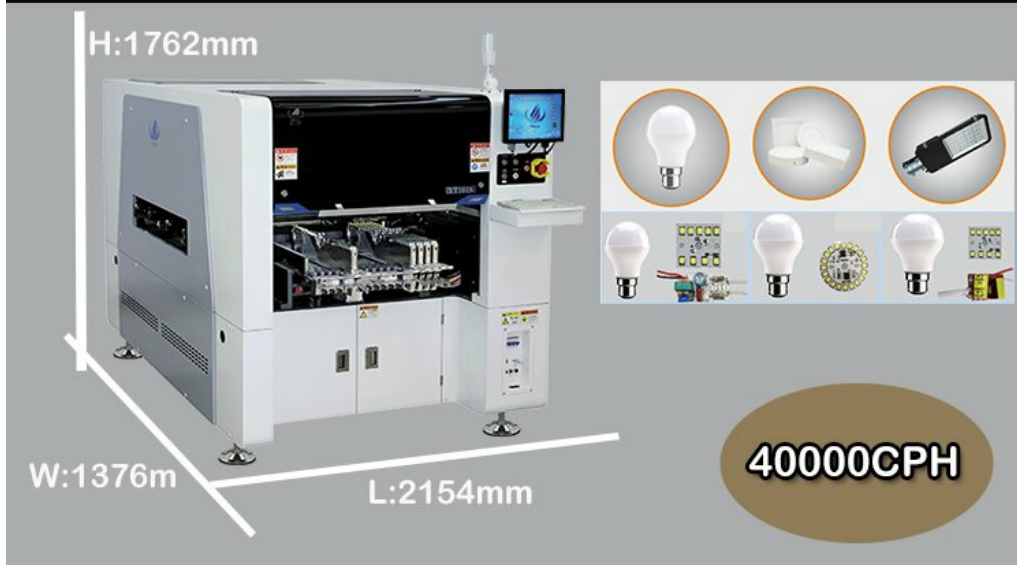
3. Camera:

Brand New Flight Vision Camera

Fixed Flight Vision Recognition Camera(Optional)

capture the image of placement accordingly, improve the speed and accuracy of placement.

ETON MACHINE YT-101S



Certification

ETON obtains a number of intellectual property technologies, including 9 invention patents, 112 Practical patents, 12 software copyrights. ETON is rated as "Shenzhen high-tech enterprise", "Guangdong high-tech enterprise", "China high-tech enterprise", "Shenzhen TOP Brand", "2015 LED Technology Innovation Award", "The 4th China LED First Innovation Award", "Industry Special Contribution Award" etc.



Clients

ETON as the leading manufacturer of global photo electronic high speed pick and place machine, the products are exported more than 20 countries and regions, including India, Vietnam, Tunisia, Egypt, Turkey, Russia, Thailand, etc. Take India as an example, We have many big clients in India, Such as RK, SURYA, Fiem, Calcom, POLYCRB, etc. We have sold over a hundred machines to India.



Service

Maintenance period 1 year

One year warranty. during warranty. any parts that need to be repaired and replaced will be free.

Software and hardware lifetime maintenance

Free upgrade software, the software is Reach and developed by ETON, so we support whole lifetime free upgrade updates.

Visit customers regularly and gather information

Visit clients regularly. We attend the different exhibition in different cities every year, at the same time, we will visit local clients and support our service and collect feedback on customer suggestions in time.

Provide the latest information about technology and equipment

We give professional technology suggestions to our clients. And share the updated news with our clients

On-site service

We have some official site in India as Mumbai and New Delhi, also have site in Egypt, Turkey that can provide service timely with our engineers.

According to your needs, dedicated senior engineer will come to your factory for free install and training you how to operate the machine.

For More convenient service may I know your whatsapp or email?

Any details, please feel free contact to me. thanks!

Find me on Whatsapp or wechat: [+8613827425982](https://wa.me/8613827425982) and let's discuss more.Thank you!

Contact me

David whatsapp/wechat/Tel: [+86 13827425982](https://wa.me/8613827425982)

QQ: [3061340868](https://www.qq.com/)

E-mail: david@eton-mounter.com



Shenzhen Eton Automation Equipment Co., Ltd.



0086 13670197725 (Whatsapp/Wechat)



linda@eton-mounter.com



smtmountingmachine.com

HENGFENG INDUSTRIAL AREA,ZHOUSHI ROAD NO. 739,HEZHOU COMMUNITY,HANGCHENG STREET,BAOAN,SHENZHEN,CHINA

