



0201 Component SMT Mounter YT101S 4W CPH Pick And Place Machine

Our Product Introduction

for more products please visit us on smtmountingmachine.com

Basic Information

- Place of Origin: CHINA
- Brand Name: ETON
- Certification: CE, CCC, SIRA
- Model Number: YT101S
- Minimum Order Quantity: 1 set
- Packaging Details: vacuum adsorption, wooden packing
- Delivery Time: 30 days after receive the down-payment
- Payment Terms: T/T
- Supply Ability: 50 sets per month

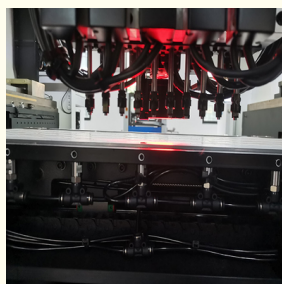


Product Specification

- Name: Pick And Place Machine
- Model: YT101S
- Warranty: 1 Year
- Applicable Components: 0201
- Application: SMD Production Line
- Condition: New
- Highlight: 0201 component SMT mounter, DOB Bulb SMT mounter, 4W CPH pick and place machine



More Images



Product Description

Apply 0201 component SMT mounter YT101S with 40000CPH pick and place machine

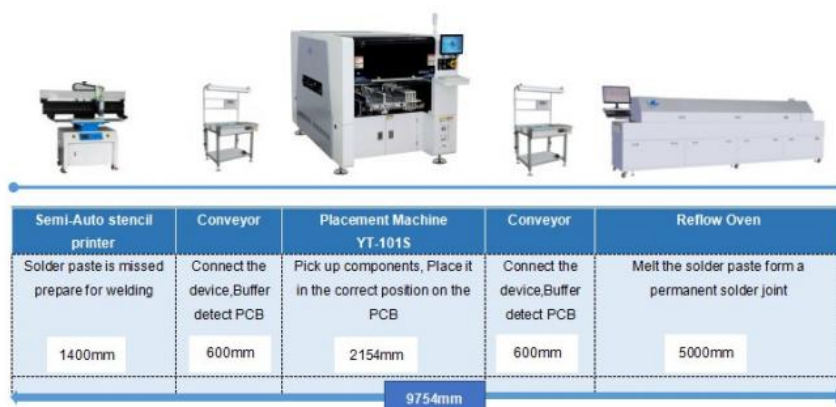
Main parameter of machine

PCB thickness	0.5-4.5mm
Repeat precision	±0.02mm
Mounting height	≤20mm
Mounting speed	40000CPH
Components range	Min 0201-40*40mm packages and IC etc
No.of head	10pcs
Feeding way	Intelligent Double head feeder

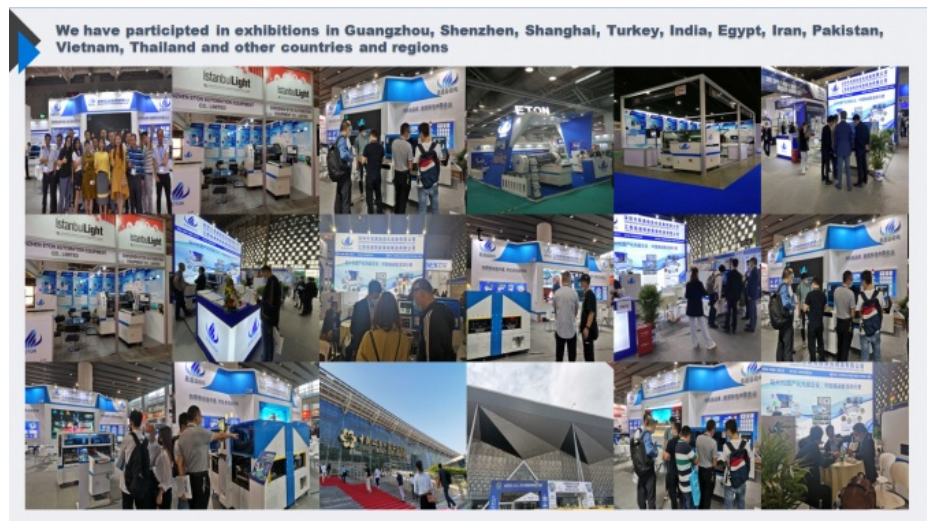
DOB Bulb making machine line

DOB Bulb making machine SMT Line is included stencil printer machine, conveyor, pick and place machine, reflow oven machine.

And this line is also not only suitable for making DOB, but also could be produce other led lighting, like the down-light, street light, panel light, driver board, etc.

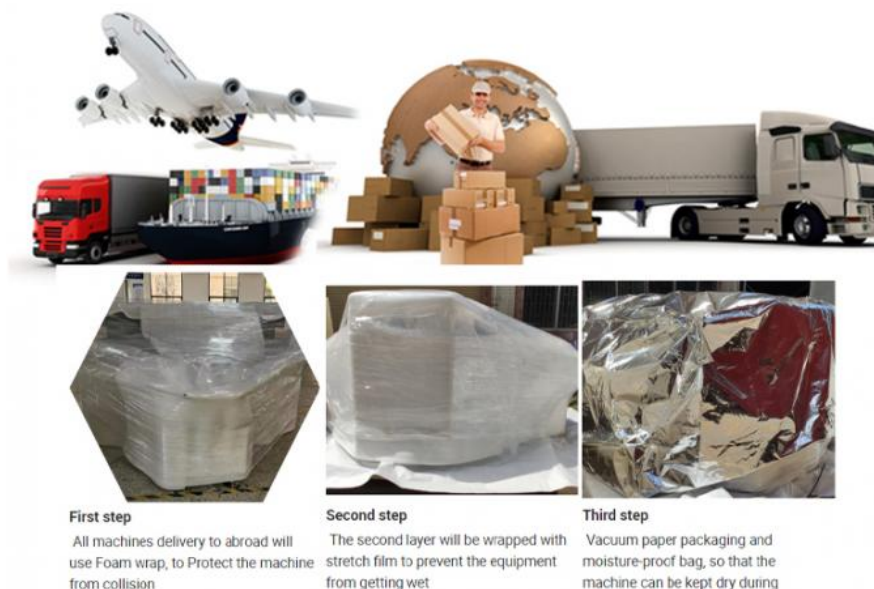


Exhibition



Our company participates in many exhibitions at home and abroad every year, You will see ETON's booth in some well-known large-scale exhibitions in China, including large-scale exhibitions held in Shenzhen, Guangzhou, Chongqing, Shanghai and other places. Foreign exhibitions include exhibitions in more than 20 countries including Mumbai, Delhi, Egypt, Turkey, and Vietnam.

Packaging



Our mode of transportation including water, land and air transportation. You can choose the most suitable way according to your requirements.

Our packing is made of wooden box with vacuum package, and we promise to deliver the goods within four weeks after payment.

Service

Maintenance period 1 year

One year warranty, during warranty, any parts need to be repaired and replaced will be free.

Software and hardware lifetime maintenance

Free upgrade software, software is Reach and develop by ETON, so we support whole lifetime free upgrade updates.

Visit customers regularly and gather information

Visit clients regularly. We attend different exhibition in different cities every year, at the same time, we will visit local clients and support our service and collect and feedback customer suggestions in time.

Provide latest information about technology and equipment

We give professional technology suggestion with our clients. And share the updates news to our clients

FAQ

Q: How to operate the machine?

A: We will provide online video to help you to operate, we also have professional overseas engineers to your factory provide install, training service until you can operate the machine adroitly.

Q: Does your machines have quality certificate?

A: All of the machines have passed CE, SIRA and CCC certificate and have own patent.

Q: What is your payment terms?

A: 30% deposit in advance and 70% balance before shipment.

Q: What is the payment way ?

A: We accept the payment terms: L/C, T/T.

Q: Is it hard to use these machines?

A: No, not hard at all. For our previous clients, at most 2 days is enough to learn to operate the machines.

Q: What are the main LED products our machines for?

A: There are different machines in our company and different machines apply to different LED lights. The main products we can apply: bulb tube strip lamp panel. Down light, streetlight, ceiling light, wall washer light and so on.

Q: How can you make sure that the products won't be damaged or wet?

A: We take multiple measures to protect the products. They are first packing with individual. We put them into a carton and wrapped with plastic film and sealed with tape to keep the cartons in position and protect them from water.



Shenzhen Eton Automation Equipment Co., Ltd.



0086 13670197725 (Whatsapp/Wechat)



linda@eton-mounter.com



smtmountingmachine.com

HENGFENG INDUSTRIAL AREA, ZHOUSHI ROAD NO. 739, HEZHOU COMMUNITY, HANGCHENG STREET, BAOAN, SHENZHEN, CHINA