



High Precision SMT chip mounter 40000CPH with 2 sets of camera pick and place machine

Our Product Introduction

for more products please visit us on smtmountingmachine.com

Basic Information

- Place of Origin: CHINA
- Brand Name: ETON
- Certification: CE, CCC, SIRA
- Model Number: YT101S
- Minimum Order Quantity: 1 set
- Packaging Details: vacuum adsorption, wooden packing
- Delivery Time: 30 days after receive the down-payment
- Payment Terms: T/T
- Supply Ability: 50 sets per month

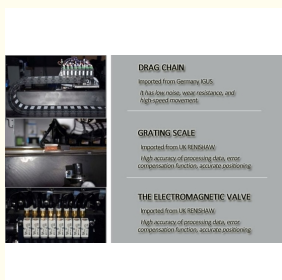


Product Specification

- Warranty: 1 Year
- Condition: New
- Mounting Speed: 40000 CPH
- Applicable Components: 0201
- Name: SMT Pick And Place Machine
- Usage: SMT Mounting Machine, LED
- Pcb Thickness: 0.5-4.5 Mm
- Nozzles: 10pcs



More Images



Product Description

High Precision SMT chip mounter 40000CPH with 2 sets of camera pick and place machine

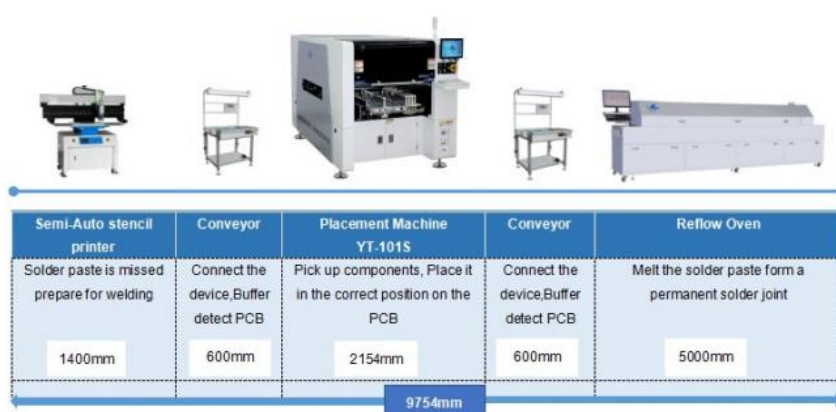
Main parameter of machine

PCB thickness	0.5-4.5mm
Repeat precision	±0.02mm
Mounting height	≤20mm
Mounting speed	40000CPH
Components range	Min 0201-40*40mm packages and IC etc
No.of head	10pcs
Feeding way	Intelligent Double head feeder

DOB Bulb making machine line

DOB Bulb making machine SMT Line is included stencil printer machine, conveyor, pick and place machine, reflow oven machine.

And this line is also not only suitable for making DOB, but also could be produce other led lighting, like the down-light, street light, panel light, driver board, etc.



ETON supply whole SMT line machine, mainly included : Automatic stencil printer, Semi-automatic stencil printer, Conveyor, Pick and place machine, Reflow oven machine, Loader, Un-loader machine, PCB cleaning machine, stencil printing machine, etc.

Packaging and Delivery

ETON machine using Vacuum wooden box packaging:

Firstly, Wrap the machine with film

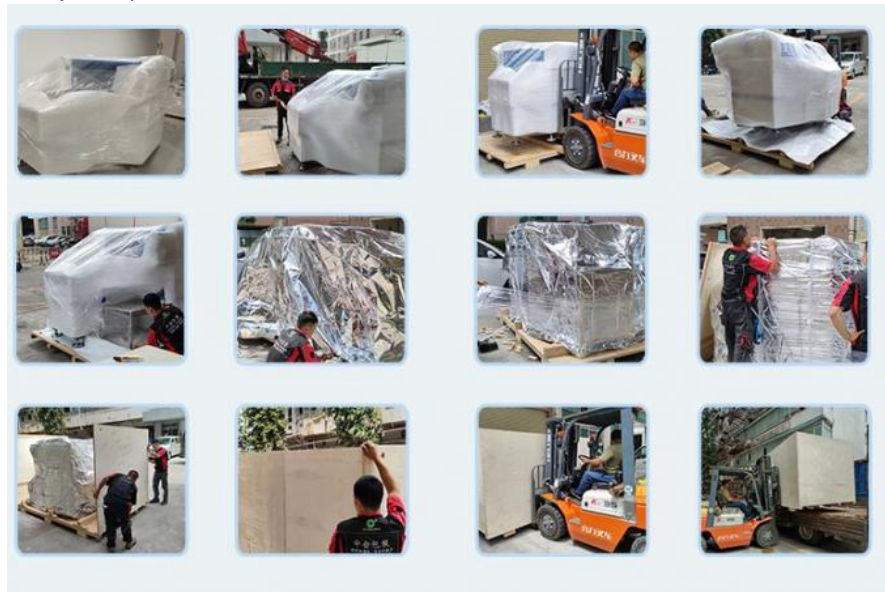
Secondly, Sponge the machine

Thirdly, Use a vacuum bag to compress the air in the machine and encapsulate the machine

Fourthly, Fix the foot cup of the machine with wooden stakes

Fifth, fix the machine again with a rope

Finally, encapsulate the machine in a wooden box



Certificate

Since the establishment, ETON focus on technology reach and development, obtains a number of intellectual property technologies, including **9 invention patents, 112 practical patents, 12 software copyrights.**

ETON is rated as "Shenzhen High-tech enterprise" "Guangdong high-tech enterprise" "China high-tech enterprise" "2015 LED

Technology Innovation Award" "The 4th China LED First Innovation Award" "Industry Special Contribution Award" etc.



FAQ

Q: How can you make sure that the products won't be damaged or wet?

A: We take multiple measures to protect the products. They are first packing with individual. We put them into a carton and wrapped with plastic film and sealed with tape to keep the cartons in position and protect them from water.

Q: How is the breakdown rate of machine?

A: our machine is very stable,the breakdown rate is less than 0.001.

Q: What kind of machine will provide besides pick and place machine ?

A: ETON as the largest manufacturer of SMT machine in China, we provide whole SMT line, such as reflow oven, printer, conveyor, pick and place machine, Loader, Unloader, etc.

Q:What are your advantages?

A: Our company stick to five level management policy: sincere business, focus on R&D, manufacturing intentions, considerate service, customer trust.

Q: Do you have oversea after sale service?

A: We can provide technical support abroad. If you have any technical problems, our engineers will provide you with timely support.Aboard, we have India office, Indian engineer, Egyptian office and Egyptian engineer , etc.

Contact me

David

E-mail: david@eton-mounter.com

whatsapp/wechat/Tel: +86 13827425982



Shenzhen Eton Automation Equipment Co., Ltd.



0086 13670197725 (Whatsapp/Wechat)



linda@eton-mounter.com



smtmountingmachine.com

HENGFENG INDUSTRIAL AREA,ZHOUSHI ROAD NO. 739,HEZHOU COMMUNITY,HANGCHENG STREET,BAOAN,SHENZHEN,CHINA