



## LED Lighting Single Module SMT Machine With Magnetic Linear Motor

### Our Product Introduction

for more products please visit us on [smtmountingmachine.com](http://smtmountingmachine.com)

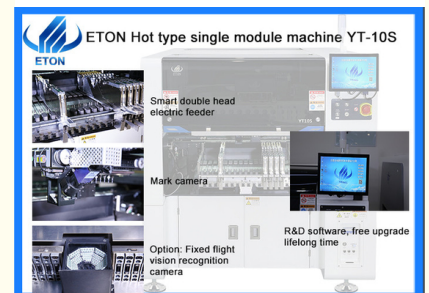
#### Basic Information

- Place of Origin: China
- Brand Name: ETON
- Certification: CE,CCC,SIRA
- Model Number: YT-10S
- Minimum Order Quantity: 1 set
- Packaging Details: Packing in film package and foam cotton, and covering vacuum bag within sturdy wooden boxes.
- Delivery Time: 30 days
- Payment Terms: T/T
- Supply Ability: 50 sets per month



#### Product Specification

- Warranty: 1 Year
- Power Supply: 220V,50HZ
- Condition: New
- Weight: 1700KG
- Mounting Speed: 45000 CPH
- Dimension: 2154\*1376\*1762mm
- Feeders: 16 Pcs
- Pcb Thickness: 0.5-4.5 Mm
- Positioning Accuracy:  $\pm 0.02$  Mm
- Highlight: **LED Lighting SMT Machine, Single Module SMT Machine, Magnetic Linear Motor SMT Machine**



## Product Description

### Special price magnetic linear motor LED lighting Single module SMT machine

#### Machine main features

Single module magnetic linear motor multifunctional pick and place machine

Mounting components: LED Chip, Capacitor, Resistor, Lens, IC, Shaped components, etc.

Support YT series double head intelligent electric tape reel feeder, by optically correcting the feeding position of the component, it can achieve stable, High accurate and high-speed feeding.

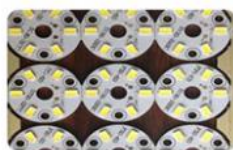
High precision vision alignment flight identification, auto-optimization after coordinates generated, etc

Option: Fix flight vision recognition camera.

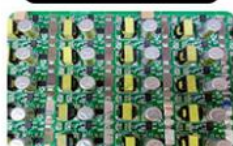
#### Machine main parameter

Model	YT-10S
PCB size	Max size: 500*350 mm Min size: 50*50 mm
PCB thickness	0.5-4.5 mm
PCB clamping	Cylinder clamping, track width adjustable
Software	R&D independently
Production management MES system	Customized (Option)
Off-line programming	Available
Camera	2 sets of digital camera, Vision for the flight identification, Mark correction
Repeat precision	±0.02 mm
Mounting height	≤15 mm
Optimal speed	45000 CPH
Component range	Min 0201~40*40 mm packages and IC etc.
Position mode	Optical
No.of heads	10 PCS
Feeding way	Electric feeder with double motor

#### Machine application



PCBA



Ceiling lamp



LED bulbs



Spotlight



Street light



Panel light



Down light

#### SMT Line solution

The SMT production line has two schemes: **semi-automatic and fully automatic line**. If you are just starting to do it, I suggest you do a semi-automatic production line, which **can effectively save your cost**.

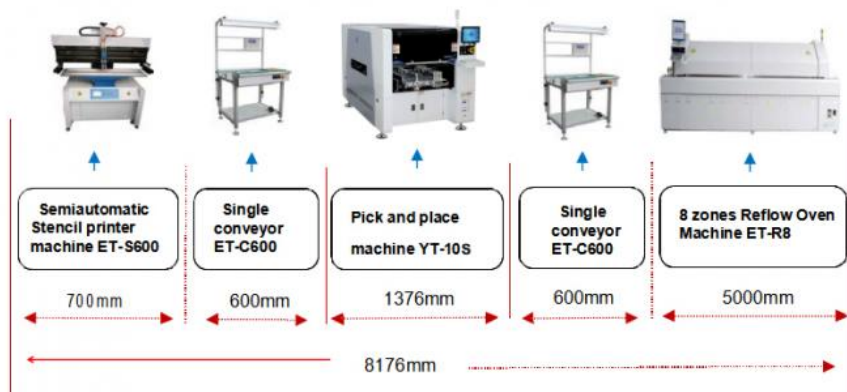
The equipment required for the semi-automatic production line includes:

**Semi-automatic printing machine:** the solder paste is printed on the PCB pad through the stencil;

**Pick and place machine:** mount the led chips or other components on the designated position on the PCB board;

**Reflow oven:** melting the solder paste to make it adhere to the mounting components;

**Conveyor:** inspect the placement and soldering quality, and also play a role in transferring PCB boards and buffering on the SMT production line



## Our Exhibitions

Participate in various exhibitions at home and abroad every year (except during the epidemic period)

Domestic exhibitions: Guangzhou Guangya Exhibition, Shanghai Munich Exhibition, Chongqing LED Light Exhibition, etc.

Foreign exhibitions: India Mumbai Exhibition, India Delhi Exhibition, Egypt Exhibition, Turkey Exhibition, Pakistan Exhibition, Thailand Exhibition, etc.



## EXHIBITION

We have engaged in some foreign exhibition India Mumbai Exhibition, such as India Delhi Exhibition, Egypt Exhibition, Turkey Exhibition, Pakistan Exhibition, etc. And we have took part in our domestic exhibition, like Guangzhou Guangya Exhibition, Shanghai Munich Exhibition, Chongqing LED light Exhibition, etc.

## Shipping and Delivery

Shipping Way:

- By air, for sample and small package
- By sea, for large package and quantity;
- Other ways as customer requested.

Delivery Time:

Within 30 Days.



## FAQ

Q. Can you accept CIF as the quoted price?

A. We only accept EXW as the quoted price for it is convenient and lower cost for both sides.

Q.Can I pay by L/C.

A.The procedure of L/C payment is complicated, which will waste a lot of time on payment. For more, you need to wait longer to get the machine, which will delay your production plan and delay the opportunity.

Q. How many products can your machine make per day?

A. The capacity of our machine is according to the real products, and the number of components on your PCB board that is important factor to figure out the actual speed of our machine with your products.

**Contact me:**

**Whatsapp/Wechat: +8613632769526**

**Email: Noah@eton-mounter.com**



**Shenzhen Eton Automation Equipment Co., Ltd.**



0086 13670197725 (Whatsapp/Wechat)



[linda@eton-mounter.com](mailto:linda@eton-mounter.com)



[smtmountingmachine.com](http://smtmountingmachine.com)

HENGFENG INDUSTRIAL AREA,ZHOUSHI ROAD NO. 739,HEZHOU COMMUNITY,HANGCHENG  
STREET,BAOAN,SHENZHEN,CHINA