



Max 260mm FPCB Automatic SMT Printer Machine 0.025mm High Printing Accuracy

Our Product Introduction

for more products please visit us on smtmountingmachine.com

Basic Information

- Place of Origin: China
- Brand Name: ETON
- Certification: CE,CCC,SIRA
- Model Number: ET-AL1025
- Minimum Order Quantity: 1 set
- Packaging Details: Packing in film package and foam cotton, and covering vacuum bag within sturdy wooden boxes.
- Delivery Time: 30 days
- Payment Terms: T/T
- Supply Ability: 50 sets per month



Product Specification

- Application: LED Strip
- Power Supply: AC:220±10%,50/60HZ 1Φ 1.5KW
- Warranty: 1 Year
- Condition: New
- Weight: 600KG
- Pcb Thickness: 0.5-5 Mm
- Printing Accuracy: 0.025mm
- Cycle Time: ≤9s (Exclude Printing & Cleaning)
- Highlight: **High Accuracy SMT Printer Machine, FPCB Automatic SMT Printer, FPCB Automatic SMT Printer Machine**



Product Description

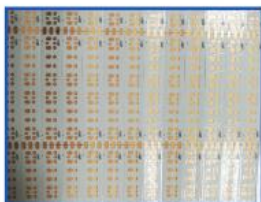
Platform jacking tension Max 260mm FPCB automatic SMT printer machine

Machine configuration

- Programmable suspension printing head;
- Two sets of stepping motor drive, the pressure of front and rear scraper can be adjusted separately to ensure the inconsistency of front and rear printing caused by fatigue deformation of scraper material;
- Effectively control the stroke, improve the printing efficiency, and prevent the leakage of solder paste;
- Standard stainless steel scraper, unique design, improve the service life of the blade;
- Downward vision alignment system;
- CNC guide rail adjustment;
- Industrial controlled computer, Windows XP interface operating system;
- Built-in software diagnostic system;
- SMTA interface.

Technical parameter

Screen Frames	Min Size	850mm
	Max Size	550mm
	Thickness	25~45mm
FPCB Min Size		50mm
FPCB Max Size		260mm
FPCB Thickness		0.5~5mm
FPCB Warpage		Max. FPCB diagonal 1
Transport Height		900±40mm
Transport Direction		Left-Right
Transport Speed		Max 1000mm/S Programmable (Adjustable)
Board Location	Support System	Platform jacking tension
	Clamping System	Edge clamp fixed
Print head		Two independent motorized print heads
Squeegee Speed		6~300mm/sec
Squeegee Pressure		0~10Kg/cm ²
Squeegee Angle		55°(Standard)
Squeegee Type		Stainless steel(Standard), plastic
Stencil Separation Speed		0.1~20mm/sec Programmable
Cleaning System		Manual cleaning
Table Adjustment ranges		X:±5mm;Y:±5mm;θ:±2°
Machine		
Repeat Position Accuracy		±0.01mm
Printing Accuracy		±0.025mm
Cycle Time		≤9s (Exclude Printing & Cleaning)
Air Required		4.5~6Kg/cm ²
Power Input		AC:220±10%,50/60HZ 1Φ 1.5KW
Control Method		PC Control
Machine Dimensions		1754(L)X1249(W)X1600(H)mm
Machine Weight		Approx:600Kg
FPCB transport over plate height		20mm



PCB



PCBA



Product

Our advantage

We can provide SMT line solution for you!

Pick and place machine/reflow oven/stencil printer/pcb conveyor/SPI/AOI.etc

- 1.Light Factory for :led bulbs,DOB,lens,panel light,dowlight,streetlight,tube,0.5m,1m strip light,etc.
- 2.Provide Overseas engineers for Free installation and free training.
- 3.TOP brand of China SMT machine manufacturer,500 employees for ETON



Shenzhen ETON automation equipment company is a leading manufacturer of global optoelectronic high speed pick and place machine, the products are exported to more than 20 countries and regions, including South Korea, India, Vietnam, Tunisia, Egypt, Turkey, Russia, Brazil etc.



ETON industrial park covers an area of 50,000 square meters

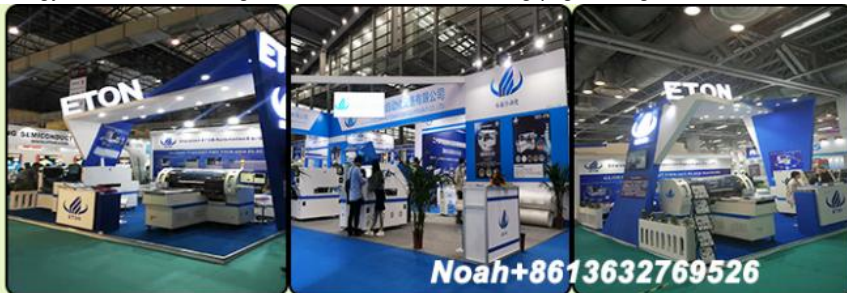


Noah+8613632769526



Our Exhibitions

As an experienced company of trading SMT pick and place machine with more than 30 countries and regions abroad, Eton has participated in many exhibitions of foreign countries, such as India Mumbai Exhibition, India Delhi Exhibition, Egypt Exhibition, Turkey Exhibition, Pakistan Exhibition, etc. And also we have took part in our domestic exhibition, like Guangzhou Guangya Exhibition, Shanghai Munich Exhibition, Chongqing LED light Exhibition, etc.



Noah+8613632769526

EXHIBITION



Related Machine

ETON is a leading SMT high speed pick and place machine manufacturer in China, and we also provide whole line solution with peripheral devices as stencil printer, conveyor, glue dispenser, transitional and reflow oven etc.



ETON SMT line peripheral devices



Contact me:
Whatsapp/Wechat: +8613632769526
Email: Noah@eton-mounter.com



Shenzhen Eton Automation Equipment Co., Ltd.



0086 13670197725 (Whatsapp/Wechat)



linda@eton-mounter.com



smtmountingmachine.com

HENGFENG INDUSTRIAL AREA,ZHOUSHI ROAD NO. 739,HEZHOU COMMUNITY,HANGCHENG STREET,BAOAN,SHENZHEN,CHINA