



## Roll To Roll Strip Solder Paste Stencil Printer Machine For 260mm FPCB Width

### Our Product Introduction

for more products please visit us on [smtmountingmachine.com](http://smtmountingmachine.com)

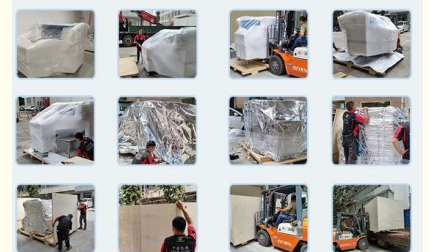
#### Basic Information

- Place of Origin: CHINA
- Brand Name: ETON
- Certification: CE, CCC, SIRA
- Model Number: ET-AL1025
- Minimum Order Quantity: 1 set
- Packaging Details: vacuum adsorption, wooden packing
- Delivery Time: 30 days after receive the down-payment
- Payment Terms: T/T
- Supply Ability: 50 sets per month



#### Product Specification

- Warranty: 1 Year
- Application: SMT Production Line, for SMT Machine
- Condition: 100% Original, Brand-new
- Product Name: FPCB Stencil Printer Machine
- Usage: Circuit Board Assembly, SMT Mounting Machine, LED
- Apply Length: Any Length Of Strip Light
- Local Service: India, Egypt, Vietnam
- Squeegee Speed: 6~300mm/sec
- Highlight: Roll Strip Solder Paste Stencil Printer, Roll Strip Stencil Printer Machine, Stencil Printer Machine For 260mm FPCB



#### More Images



## Product Description

### roll to roll solder paste machine for 260mm FPCB width

#### Technical parameter

Screen Frames	Min Size	850mm
	Max Size	550mm
	Thickness	25~45mm
FPCB Min Size		50mm
FPCB Max Size		260mm
FPCB Thickness		0.5~5mm
FPCB Warpage		Max. FPCB diagonal 1
Transport Height		900±40mm
Transport Direction		Left-Right
Transport Speed		Max 1000mm/S Programmable (Adjustable)
Board Location	Support System	Platform jacking tension
	Clamping System	Edge clamp fixed
Print head		Two independent motorized print heads
Squeegee Speed		6~300mm/sec
Squeegee Pressure		0~10Kg/cm2
Squeegee Angle		55°(Standard)
Squeegee Type		Stainless steel(Standard), plastic
Stencil Separation Speed		0.1~20mm/sec Programmable
Cleaning System		Manual cleaning
Table Adjustment ranges		X:±5mm;Y:±5mm;θ:±2°
Machine		
Repeat Position Accuracy		±0.01mm
Printing Accuracy		±0.025mm
Cycle Time		≤9s (Exclude Printing & Cleaning)
Air Required		4.5~6Kg/cm2
Power Input		AC:220±10%,50/60HZ 1Φ 1.5KW
Control Method		PC Control
Machine Dimensions		1754(L)X1249(W)X1600(H)mm
Machine Weight		Approx:600Kg
FPCB transport over plate height		20mm

#### Company advantages

ETON was established in 2011 with over 10 years experiences in high speed pick and place machine. We are the largest high -tech manufacturer in China with strong capability of design,R&D manufacture,sales&services."High efficiency" "High quality"and "High Stability " are he core technology of ETON.

Strong production capacity, ETON have more than 50000 square meter Industrial park in Jiangxi Province, machine capacity more than 50 units/month

We had building a long-term partnership with some strong factories!

We specialize in this field for 20 years.

We have our own professional designers.

We have 50,000 square meters of industrial park.



The hall of office building in shenzhen



The hall of office building in jiangxi



show room



more than 300 employees



7 building



strict machine testing



assembly line

### Exhibition

ETON actively participates in various exhibitions at home and abroad, and lets our products show up in front of our customers. Our exhibitions include domestic Guangzhou Light Asia Exhibition, Shanghai Munich Exhibition, Chongqing LED exhibition, international exhibitions in India Mumbai exhibition, Pakistan exhibition, Egypt exhibition, Turkey exhibition and so on.

### Packaging

Step 1: Wrap with stretch film to prevent the equipment from.

Step 2: Vacuum paper packaging and moisture-proof bag, so that the machine can be kept dry during transportation to prevent moisture.

Step 3: Use straps and triangular wood to fix the machine to prevent damage to the machine during transportation.

Step 4: Each exported machine will be equipped with sturdy export wooden boxes, to ensure that the delivered product is good.

### Service

Maintenance period 1year

One year warranty, during warranty, any parts need to be repaired and replaced will be free.

Software and hardware lifetime maintenance

Free upgrade software, software is Reach and develop by ETON, so we support whole lifetime free upgrade updates.

Visit customers regularly and gather information

Visit clients regularly. We attend different exhibition in different cities every year, at the same time, we will visit local clients and support our service and collect and feedback customer suggestions in time.

Provide latest information about technology and equipment

We give professional technology suggestion with our clients.And share the updates news to our clients

### FAQ

Q: Does your machines have quality certificate?

A: All of the machines have passed CE,SIRA and CCC certificate and have own patent.

Q: What is your payment terms?

A: 30% deposit in advance and 70% balance before shipment.

Q: What is the payment way ?

A: We accept the payment terms: L/C, T/T.

Q: Is it hard to use these machines?

A: No, not hard at all. For our previous clients, at most 2 days is enough to learn to operate the machines.

Q: Can you provide a whole line solution?

A: Yes, we can. We can supply SMT line and LED production line.

**Contact David**

whatsapp/wechat/tel: **+86 13827425982**

E-mail: **david@eton-mounter.com**



**Shenzhen Eton Automation Equipment Co., Ltd.**



0086 13670197725 (Whatsapp/Wechat)



linda@eton-mounter.com



smtmountingmachine.com

HENGFENG INDUSTRIAL AREA, ZHOUSHI ROAD NO. 739, HEZHOU COMMUNITY, HANGCHENG STREET, BAOAN, SHENZHEN, CHINA