



High Speed Pick And Place Machine 80000CPH PCB Mounting Machine

Our Product Introduction

for more products please visit us on smtmountingmachine.com

Basic Information

- Place of Origin: CHINA
- Brand Name: ETON
- Model Number: HT-E8D-1200
- Minimum Order Quantity: 1 set
- Price: FOB USD 50000~80000/sets
- Packaging Details: Our packing is made of wooden box with vacuum package, and we promise to deliver the goods within four weeks after payment.
- Delivery Time: 30 work days after deposit
- Payment Terms: T/T
- Supply Ability: 50 sets per month



Product Specification

- Name: Pick And Place Machine
- Speed: 90000CPH
- Feeders: 48 PCS
- Nozzles: 24 PCS
- Dimension: 2550*1650*1550mm
- Software: R&D Independently
- Total Weight: 1250kg
- System: Windows7
- Warranty: 1 Year
- Applicable Components: 0402--5050, resistor, capacitors, shape Components, etc
- Usage: LED Tube Large Qty Production, LED Strip, Circuit Board Assembly/LED Light Production
- Power Supply: AC220V 50Hz / AC110V 60Hz
- Quality: High Quality

Product Description

Flight Identification Visual Alignment System Pick and Place Machine with High Stability and Precision

Product Features of SMT machine

Double module magnetic linear motor+servo motor
 Electric Feeder feeding System
 Non stop material re-loading function
 Auto-optimization after coordinates generated
 Component:0402,LED chip,capacitor,resistor,lens,IC ,shape compoents,etc

HT-E8D-1200 PICK AND PLACE MACHINE



HT-E8D-1200

Double module pick and place machine

Wide range application
 Component available size:0402 mm
 Component height:17mm

High-speed capability
 24 heads Optimum capacity: 90000CPH



One Stop SMT Whole Line Solution

High precision: Mark recognition and fixed flight vision camera

Application products : LED bulb,DOB bulb, power driver,floodlight,led display and so on

Factory direct sales, free installation and training



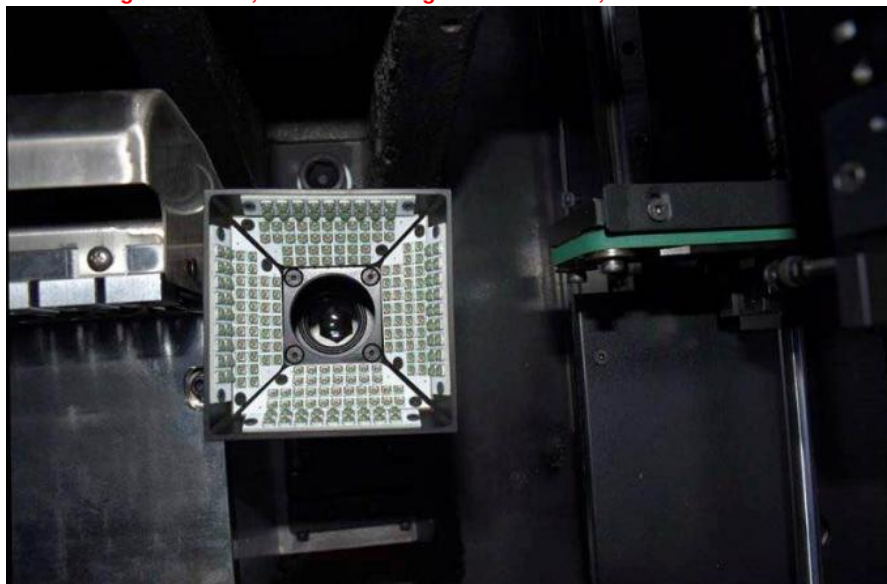

Technical Parameter

| Model | HT-E8D-1200 | HT-E8D-600 |
|---------------------------|---|--------------------------------|
| PCB size | Max:1200*300mm min:100*100mm | Max:600*300mm min:100*100mm |
| PCB clamping | Adjustable pressure pneumatic | |
| Mounting speed | Optimal speed 90000CPH | |
| Power & power consumption | 380V AC 50HZ 8KW | |
| Feeder station | 48PCS | |
| Head | 24PCS | |
| GAS consumption | 0.4~0.6mpa | |
| Transmission direction | Both direction(Option) | |
| X,Y,Z axis drive way | High end magnetic linear motor +servo motor | |

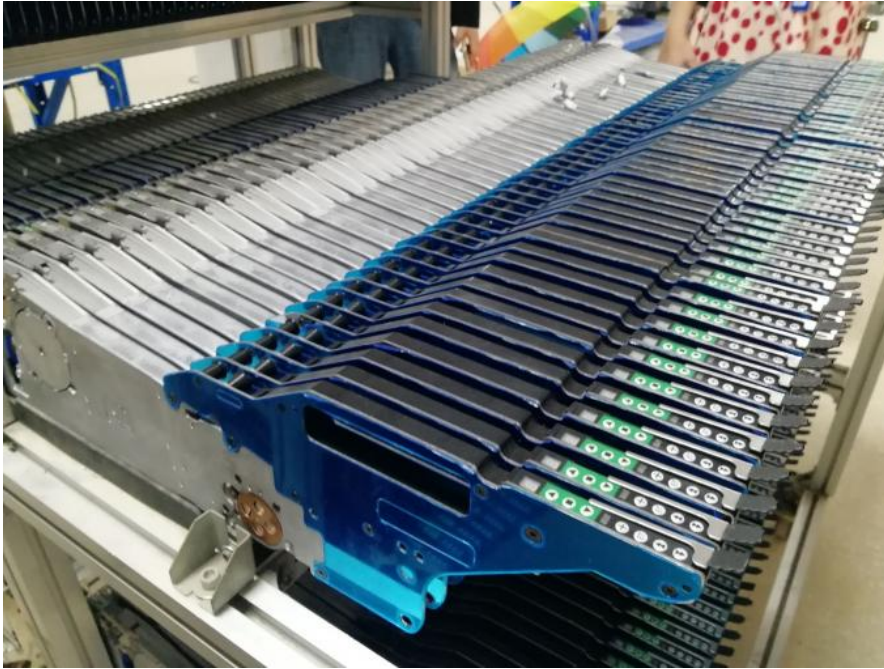
Machine Features

Vision System

4 sets of digital Camera,Vision for the flight identification,Mark Correction



Electric Feeder feeding System
Feeding way:Electric feeder with Double motor
Feeder station:48 PCS
Feeding Type:electric feeder IC tray;Vibration Feeder

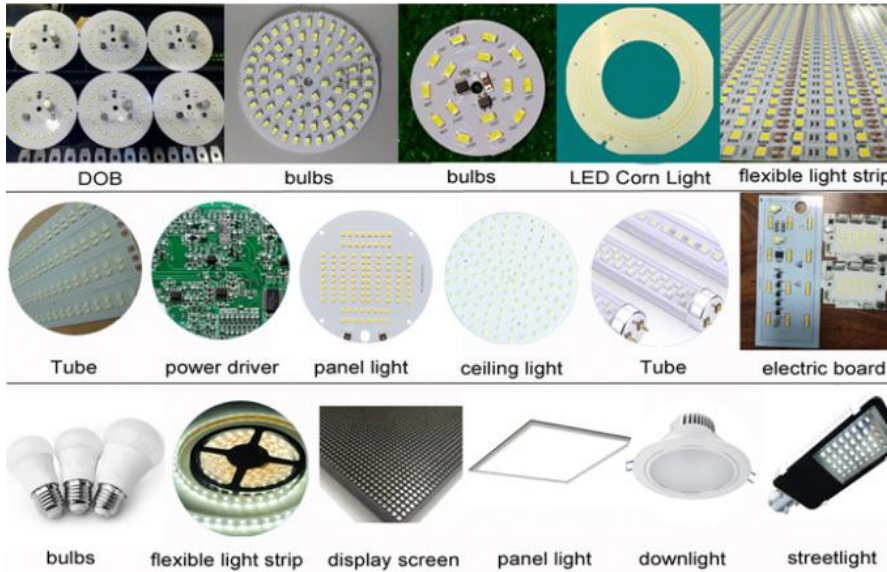
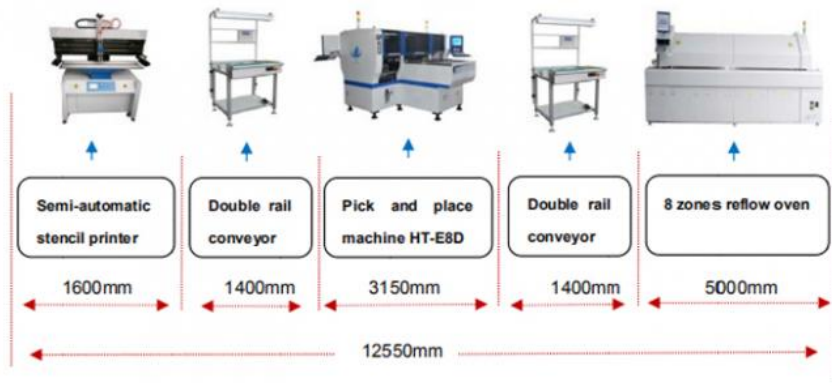


Dual module System
To produce two different products at the same time
Double mounting module
Save time and places



Application

ETON - HT-E8D-1200 Semi-automatic Production Line



CONTACT US

Ethel Zhou Sale engineer

Phone/wechat/whatsapp: 0086 13824337025

E-mail: ethel@eton-mounter.com



Wechat



Whatsapp



Skype



Full SMT line Solution Expert

SMT Machines
Pick and place machine
Stencil Printer
Reflow oven
conveyor
SPI/AOI
Loader/Unloader machine



SHENZHEN ETON AUTOMATION EQUIPMENT CO., LIMITED

Add: The 2nd Floor, Building C2, Hengfeng Industrial Area, Zhoushi Road No. 739, Hezhou Community, Hangcheng, Baoan, Shenzhen
Manufacturing Center ETON Industrial Park, Yanglinhu Street No. 273 Ruichang City, Jiangxi, China



Shenzhen Eton Automation Equipment Co., Ltd.



0086 13670197725 (Whatsapp/Wechat)



linda@eton-mounter.com



smtmountingmachine.com

HENG FENG INDUSTRIAL AREA, ZHOUSHI ROAD NO. 739, HEZHOU COMMUNITY, HANGCHENG STREET, BAOAN, SHENZHEN, CHINA