



104 Feeder Station High-end Magnetic Linear Motor Placement Machine SMT Line

Our Product Introduction

for more products please visit us on smtmountingmachine.com

Basic Information

- Place of Origin: China
- Brand Name: ETON
- Certification: CE,CCC,SIRA,ISO
- Model Number: KT10S
- Minimum Order Quantity: 1 set
- Packaging Details: Packing in film package and foam cotton, and covering vacuum bag within sturdy wooden boxes.
- Delivery Time: 30 working days
- Payment Terms: T/T
- Supply Ability: 50 sets per month

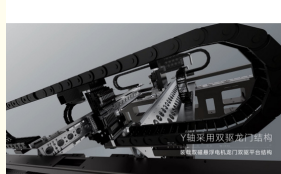
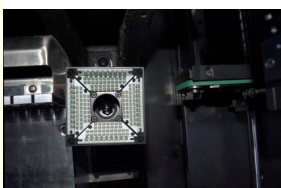


Product Specification

- Feeders: 52 PCS(option 104 PCS), IC Tray Option
- Pcb Thickness: 0.5-5 Mm
- Application: SMD Production Line,SMT Production Line,for SMT Machine
- Condition: New
- Product Name: Automatic SMT Pick And Place Machine
- Weight: 2080KG
- Mounting Speed: 48000 CPH(Optimal Speed)
- Power Supply: 220V,50-60HZ
- Highlight: High-end placement machine, Magnetic Linear Motor Placement Machine, 104 feeder station placement machine



More Images

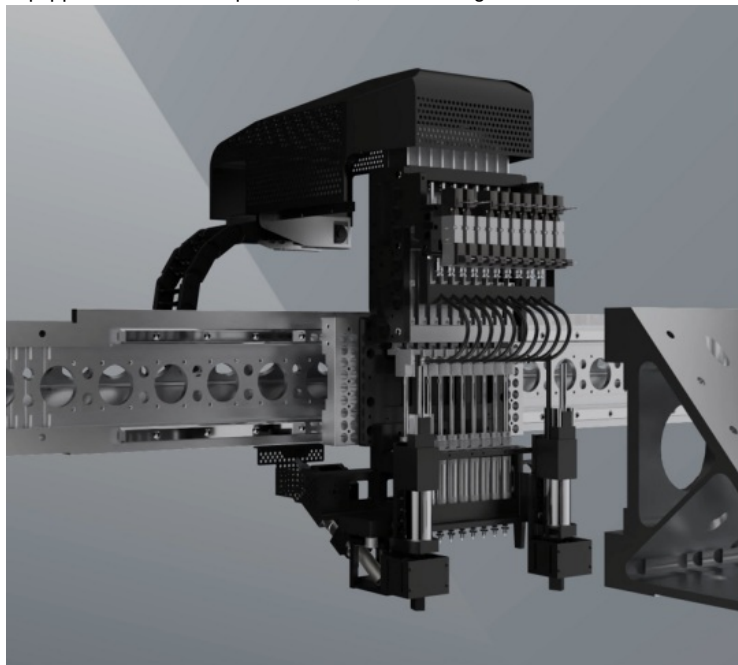


Product Description

104 feeder station high-end magnetic linear motor placement machine

Machine main features

Single module X,Y,Z axis high-end magnetic linear motor, high precision than classic model
 Y axis double drive gantry, higher speed more stability
 The placement head adopt independent vacuum detection, improve the placement performance
 Off-line programming, save time of changeover cycle
 Equipped coordinate import function, more intelligent



Machine main parameter

Model	KT10S
Dimension	1460*2015*1654mm
Total weight	2080kg
PCB size	Max:500*450mm(Length can be customized) Min:50*50mm
PCB thickness	0.5-5mm
Mounting precision	CHIP ± 0.03 mm, QFP ± 0.025 mm, Cpk $\geq 1.0(3\sigma)$
Mounting speed	48000 CPH(Optimal speed)
Components	LED, capacitor, resistors, shaped components,etc
Power consumption	220AC 50HZ 1.5KW
Feeder station	52 PCS(option 104 PCS), IC tray option
No. of head	10 PCS

SMT Production Line



Our advantage

ETON is the pioneer of SMT machine field in China which have more than 11 years experiences. And owned CCC, SIRA, CE certificates with 9 invention patents, 112 practical patents, 12 software copyrights of intellectual property technologies.
 Oversea market:The products exported to more than 30 countries and regions, including South Korea, India, Vietnam, Tunisia, Egypt,Turkey, Russia, Brazil etc.



Packages

Keep a good quality of the machine when during transportation till the destination of our clients which is an imperative aspect for one of a suitable service for our clients to buy our machine, so making sure of a qualified and sturdy packing is a key mission for us, here are the specified steps for your reference:

Noah+8613632769526

Step 1: Pack the machine in a foam cotton and stretch the film to protect the outside of it. **Step 2:** vacuum paper package and moisture proof bag, to keep dry of the machine during transportation to prevent moisture. **Step 3:** Each exported machine will be equipped with sturdy wooden boxes, to ensure the safety of the machine. **Step 4:** Transportation by trucks to the specified port. For the feeders and some spare parts usually we'll pack it separately with box.

FAQ

Q. How can I look around your industrial park if I am on aboard?

A. If you have Chinese agent we can make an appointment to show you the environment, of course we also can make video call to show you the industrial park, or we will do some video to you if you need.

Q. Can you accept CIF as the quoted price?

A. We usually accept EXW as the quoted price.

Q. Whether you have professional engineers for installation of the machine in India?

A. Yes, we have professional engineers in India with local office site in Delhi and Dammam to provide considerable service to our clients.

Contact me:

Whatsapp/Wechat: +8613632769526

Email: Noah@eton-mounter.com



Shenzhen Eton Automation Equipment Co., Ltd.



0086 13670197725 (Whatsapp/Wechat)



linda@eton-mounter.com



smtmountingmachine.com

HENGFENG INDUSTRIAL AREA,ZHOUSHI ROAD NO. 739,HEZHOU COMMUNITY,HANGCHENG STREET,BAOAN,SHENZHEN,CHINA