



Shenzhen Eton Automation Equipment Co., Ltd.
smtmountingmachine.com

45000CPH SMD Production Line SMT 28 Feeder Led Chip Mounter Pick And Place Machine

Our Product Introduction

for more products please visit us on smtmountingmachine.com

Basic Information

- Place of Origin: CHINA
- Brand Name: ETON
- Certification: CCC,CE, SIRA
- Model Number: HT-E8S-1200
- Minimum Order Quantity: 1 SET
- Packaging Details: Vacuum wooden case
- Delivery Time: 20 working days
- Payment Terms: T/T
- Supply Ability: 50 set per month



Product Specification

- Warranty: 1 Year
- Applicable Components: 0402
- Name: SMT Pick And Place Machine
- Application: SMD Production Line, SMT Mounting Shooter Machine, SMT Production Line, for SMT Machine
- Condition: New, 100% Original, Brand-new
- Product Name: Place Machine\ LED Mounter\ LED Assembly Machine
- Mounting Speed: 45000 CPH
- Feeders: 28
- Highlight: SMT 28 Feeder led chip mounter, 45000CPH SMD Production Line, chip mounter pick and place machine



More Images



Product Description

Product details

Features

With the rapid development of the LED industry, the quality requirements for automation equipment products are getting higher and higher. The ETON placement machine is equipped with MARK point positioning vision + equipment recognition functions. Pursuing high speed and high stability, this is an economical and practical LED multi-function placement machine.

Exclusive patented technology

- . Electronic feeder feeding system
- . Non-stop material re-loading function
- . Auto-optimization after coordinates generated, etc

Technical parameter

	HT-E8S-1200
L*W*H	2550*1650*1550mm
Total weight	1700kg
PCB thickness	0.5~5mm
PCB length width	Max:1200*500mm Min: 100*100mm
PCB clamping	Adjustable pressure pneumatic
Mounting mode	Group picking and separate placing, separate picking and separate placing
Mounting height	<18mm
No. of camera	2 sets of imported camera
Mounting precision	±0.04mm
Mounting speed	45000CPH
Components Space	0.2mm
Feeders station	28PCS single module
No. of nozzles	12PCS single module
Power	380AC
Power consumption	4KW
X,Y,Z,Axis drive way	High-end magnetic linear motor+servo motor

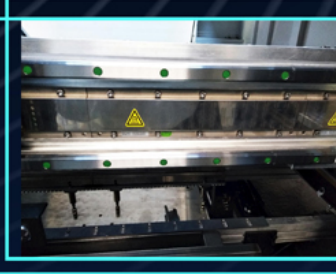
Machine Parts



Product details

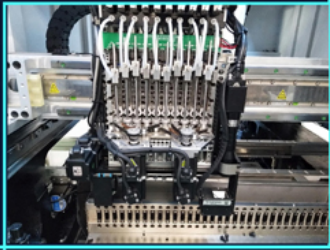
High-end magnetic linear motor + servo motor

It can ensure the high-speed and stable operation of the equipment, while maintaining the positioning accuracy of the equipment for a long time, and the placement process is smooth and low-noise.



12 PCS Mounting head

Each head is controlled by an independent servo motor, which can absorb different components at the same time, which is suitable for mounting a variety of products.



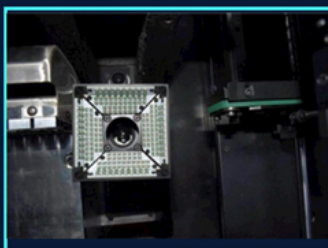
Independent R&D software

Touch screen monitor
Chinese and English interface, easy to operate
Independent software research and development



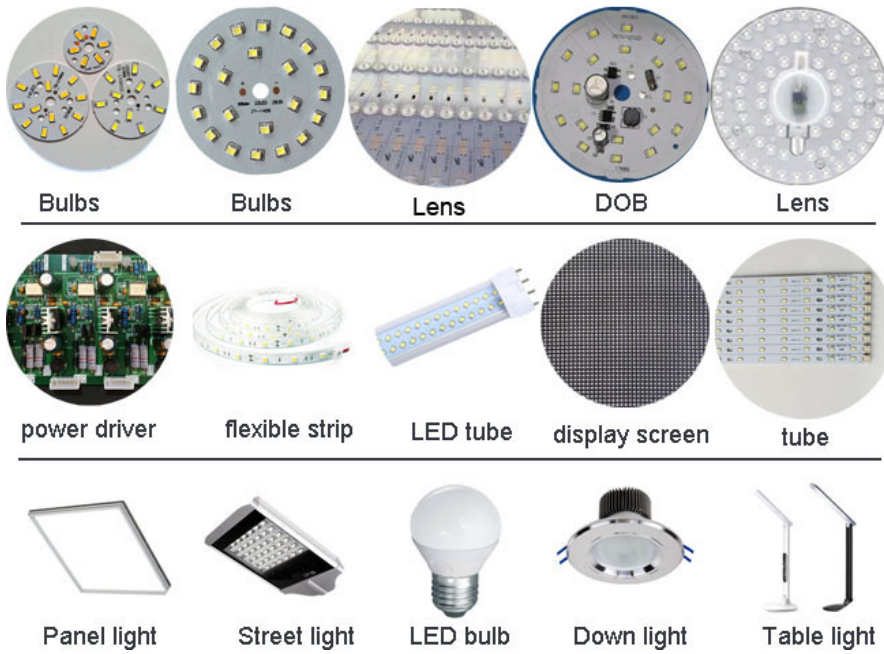
Vision system + Vision camera

Vision alignment flight identification,
Mark correction, accurate
identification of components, saving
time and improving production
efficiency to the greatest extent



Application

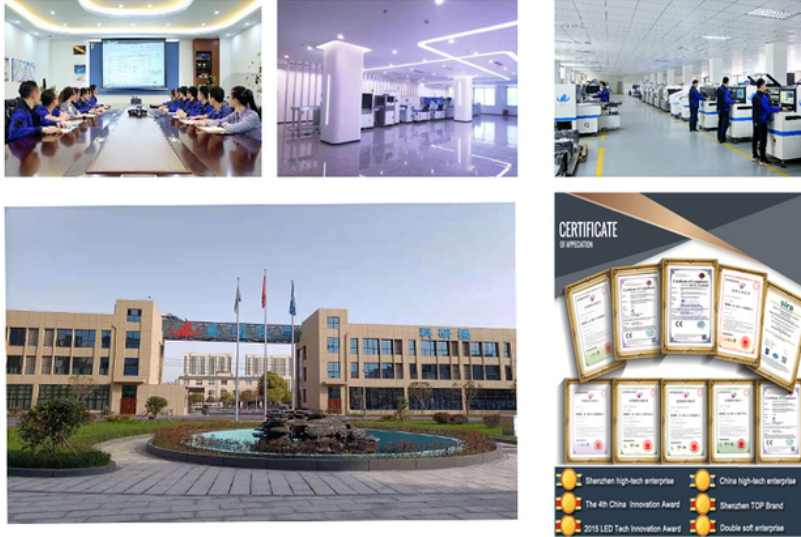
Multi-functional machine can mount many kinds of products, such as DOB, bulb, lens, linear bulbs, Led corn light, flexible light strip, power driver, panel light, ceiling light, electric board, display screen, down-light, streetlight, etc.



About our company

1. Our company has more than 15 years development history.
2. Independent R&D Exclusive Patented technology.
3. 85% large and listed LED factory in China are our client.
4. Top 1 in highspeed pick and place machine in China.
5. Overseas engineers and office in India, Egypt, Turkey
6. Door to door machine installation and training for free





Exhibition show

Our company has many exhibition, domestic and foreign. For example: India, Istanbul, Turkey, Guangzhou Guanya, Chongqin LED lighting, etc.



Related machine

Such as: pick and place machine, reflow oven, loader, conveyor, etc.

High Speed Pick And Place Machine



Multifunctional Pick And Place Machine



SMT Machine



ETON

FAQ

Q: Can we customize the machine?

A: Sure, all of our machine can be customized.

Q: Is it easy to operate ?

A: Yes, the soft language is English or Chinese. And we can provide free install and training. If there is any doubt in the process of operating the machine, please feel free contact us. In addition, we have local engineer in Turkey, India, Egypt .

Q:How about the warranty

A: We support 1 year warranty from delivery and lifetime maintenance service. Provide one to one after-sale service.

Q: Do you have the product in stock?

A: Sometimes we have some in stock for ship, but we need do machine test before shipping. Usually, the delivery date is about 20 days upon the full payment.



ETON GROUP



ABOUT US

Shenzhen ETON Automation Equipment Co., Ltd. was founded in 2011. ETON is the leading manufacturer of global optoelectronic highspeed pick and place machine, Full SMT line. the products are exported to more than 20 countries and regions, including South Korea, India, Vietnam, Tunisia, Egypt, Turkey, Russia, Brazil etc.



Testing workroom



Exhibition



ETON industrail park



Our products are exported to more than **30** countries & regions
Such as South Korea, Turkey, Egypt, India, Russia, America, Brazil, Tunisia,
Poland, Lithuania, South Africa, Iran, Vietnam, Pakistan, Saudi Arabia,
Uzbekistan, Nigeria, Germany, etc.



Contact David

Whatsapp/Wechat: +86 13827425982



Shenzhen Eton Automation Equipment Co., Ltd.



0086 13670197725 (Whatsapp/Wechat)



linda@eton-mounter.com



smtmountingmachine.com

HENG FENG INDUSTRIAL AREA, ZHOUSHI ROAD NO. 739, HEZHOU COMMUNITY, HANGCHENG STREET, BAOAN, SHENZHEN, CHINA