



## High Speed Universal Pick and Place Machine The Ultimate Solution for Manufacturing

### Our Product Introduction

#### Basic Information

- Place of Origin: Guangdong China
- Brand Name: ETON
- Certification: 3CSIRACE
- Model Number: YT10S
- Minimum Order Quantity: 1set
- Packaging Details: Vacuum packaging wooden box packaging
- Delivery Time: Within 2 weeks
- Payment Terms: T/T
- Supply Ability: 50 units a month



#### Product Specification

- Highlight: High Speed Pick and Place Machine, Universal Pick and Place Machine, Manufacturing Pick and Place Machine



## Product Description

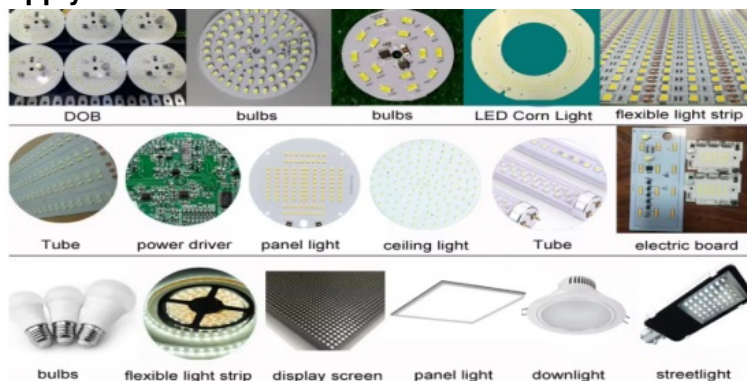


### Features

Minimum component: 0201  
 PCB Size: 500 \* 450 mm  
 Maximum height: 16mm (others can be customized)  
 X, Y, z axis: high-end magnetic linear motor  
 Support MES system



### Apply

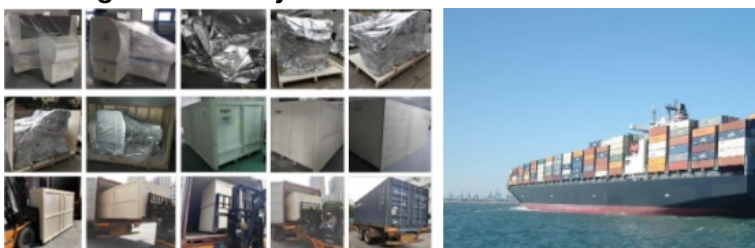


### Exhibition



Eton takes part in different exhibitions at home and abroad every year.  
 Such as Chinese cities: Guangzhou, Shanghai, Ningbo, Chongqing, etc  
 Foreign cities: India Delhi, India Mumbai, Pakistan Karachi, Egypt Cairo, Turkey Istanbul, Russia Moscow, etc

### Packing and delivery



- 1: All machines shipped abroad will use foam packaging to protect the machine from collisions
- 2: The second layer will be wrapped with stretch film to prevent the equipment from getting wet
- 3: Use belts and triangular wood to fix the machine to prevent damage to the machine during transportation
- 4: Vacuum paper packaging and moisture-proof bag to keep the machine dry during transportation to prevent moisture

5: Finally, each export machine will be equipped with strong export free wooden cases

### FAQ

1) Do you have overseas after-sales service?

We can provide technical support abroad. If you have any technical problems, our engineers will provide you with immediate support.

2) How was the training?

After buying our machines, you can send your engineers to our factory, or we can send our engineers to your factory, and then we will train your people to operate the machines.

3) Is it difficult to use the machine?

No, not at all. For our former customers, a maximum of 5 days is enough to learn to operate the machine.

4) Do you have a certificate of quality for your machines?

We are a high-tech enterprise, with CE, SIRA, CCC, ISO awarded "well-known brand" and numerous technical patents, and have rich experience (more than 10 years) in led lamp production line planning.

5) What are the terms of payment? What about trade terms?

T/T is no problem. You can choose FOB Shenzhen.



**Shenzhen Eton Automation Equipment Co., Ltd.**



0086 13670197725 (Whatsapp/Wechat)



[linda@eton-mounter.com](mailto:linda@eton-mounter.com)



[smtmountingmachine.com](http://smtmountingmachine.com)

HENGFENG INDUSTRIAL AREA,ZHOUSHI ROAD NO. 739,HEZHOU COMMUNITY,HANGCHENG  
STREET,BAOAN,SHENZHEN,CHINA