



Participating in Exhibitions YT10S Pick-and-Place Machine Boosts Production of LED Lighting and Electronic Products

Our Product Introduction

more products please visit us on smtmountingmachine.com

Basic Information

- Place of Origin: Shenzhen, China
- Brand Name: ETON
- Certification: CE, SIRA, CCC, ISO
- Model Number: HT-E6T-600
- Minimum Order Quantity: 1 UNIT
- Price: USD10000~43000USD per Unit
- Packaging Details: Standard export wooden case package (Can do as customers' requirement)
- Delivery Time: Within 15 days after receive the downpayment
- Payment Terms: T/T, L/C, Western Union, MoneyGram, D/P
- Supply Ability: 30 UNIT per month



Product Specification

- MARK Camera Quantity: 2 pcs
- Exhibition: Participates In Exhibitions At Home And Abroad Every Year
- PCB Length Width High: 1480mmx2190mmx1650mm
- No. Of Heads: 10 pcs
- Product Category: SMT Mounting Machine
- Advantages Of The YT10S Pick-and-place Machine: Can Install 0201 Component, Produce LED Lighting And Electronic Products
- High-precision Installation: The Accuracy Usually Reaches $\pm 0.03\text{mm}$ For Chips And $\pm 0.025\text{mm}$ For IC/BGA
- Total Weight: 1850kg
- Highlight: **LED Lighting Pick-and-Place Machine, YT10S Pick-and-Place Machine,**

Product Description

Product Description:

The SMT Mounting Machine is an advanced Electronic Manufacturing Machine designed for precision assembly of electronic components on PCBs. With a single head fly vision camera, this machine ensures accurate placement of components with high efficiency.

Its spacious working area accommodates PCBs with dimensions up to 1480mm x 2190mm x 1650mm, making it suitable for a wide range of electronic manufacturing needs. The machine features 52 feeder stations, providing ample capacity for various components required in the assembly process.

One of the key advantages of the SMT Mounting Machine, particularly the YT10S pick-and-place model, is its capability to install 0201 components. This feature enables precise and intricate assembly, essential for manufacturing LED lighting products and other electronic devices. Whether producing LED bulbs or other electronic products, this machine delivers consistent and reliable performance.

Weighing 1850kg in total, the SMT Mounting Machine offers a sturdy and stable platform for high-precision assembly tasks. Its robust construction ensures durability and longevity, making it a reliable investment for electronic manufacturing facilities.

Features:

Product Name: SMT Mounting Machine

Machine application: Consumer electronics industry, LED lighting industry

Exhibition: Participates in exhibitions at home and abroad every year

High-precision installation: The accuracy usually reaches $\pm 0.03\text{mm}$ for chips and $\pm 0.025\text{mm}$ for IC/BGA

Total weight: 1850kg

Mixed installation of various specification components: Compatible with the installation of other micro and conventional components such as 0402 and 0603

Technical Parameters:

MARK camera quantity	2pcs
Product Name	Fully automatic 10-head photodiode bulb manufacturing machine is an SMT pick and place machine
Fast pick-and-place capability	Installation speed of up to 48,000 CPH
High-precision installation	The accuracy usually reaches $\pm 0.03\text{mm}$ for chips and $\pm 0.025\text{mm}$ for IC/BGA
No. of head fly vision camera	1pcs
No. of feeder station	52pcs
Mixed installation of various specification components	Compatible with the installation of other micro and conventional components such as 0402 and 0603
No. of heads	10pcs
PCB length width high	1480mmx2190mmx1650mm
PCB thickness	0.5-5mm

Applications:

The ETON HT-E6T-600 SMT Mounting Machine is a versatile and efficient product that is ideal for a variety of Product Application Occasions and Scenarios:

Circuit Board Assembly Machine: The HT-E6T-600 is perfect for use in electronics manufacturing facilities for the assembly of circuit boards. Its high-speed and precise placement system ensures quick and accurate assembly of components, making it an essential tool for efficient production processes.

LED Bulb Manufacturing Machine: With the ability to install 0201 components and produce LED lighting products, the ETON SMT Mounting Machine is well-suited for the manufacturing of LED bulbs. Its advanced technology and capabilities make it a reliable choice for companies looking to streamline their LED production lines.

High-Speed SMT Placement System: The HT-E6T-600 features a No. of head fly vision camera for enhanced precision and efficiency in component placement. With 52 feeder stations and the ability to handle PCB thickness ranging from 0.5-5mm, this machine offers high-speed and high-quality SMT placement for a wide range of electronic products.

When considering the Product Application Occasions and Scenarios for the ETON SMT Mounting Machine, its certification including CE, SIRA, CCC, and ISO ensures compliance with international quality standards. Originating from Shenzhen, China, this machine boasts a minimum order quantity of 1 unit and a price range of USD10,000 to USD43,000 per unit.

Customers can benefit from flexible payment terms such as T/T, L/C, Western Union, MoneyGram, and D/P, while the supply ability of 30 units per month and delivery time within 15 days after receiving the downpayment ensure timely fulfillment of orders. The machine is carefully packaged in standard export wooden cases, with the option to customize packaging based on customers' requirements.

Choosing ETON brand SMT machines means gaining access to a wealth of advantages, including local engineers in various countries, a large industrial park, extensive R&D and marketing experience, and a global presence in over 40 countries and regions. Additionally, customers receive free installation and training, as well as lifetime software upgrades, making ETON a trusted partner in the electronics

manufacturing industry.

Support and Services:

Our SMT Mounting Machine product comes with comprehensive Product Technical Support and Services to ensure smooth operation and optimal performance. Our team of experts is available to provide assistance with installation, setup, and troubleshooting of the machine. We also offer training programs to help users maximize the capabilities of the equipment.

Packing and Shipping:

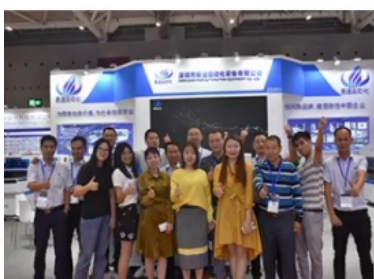
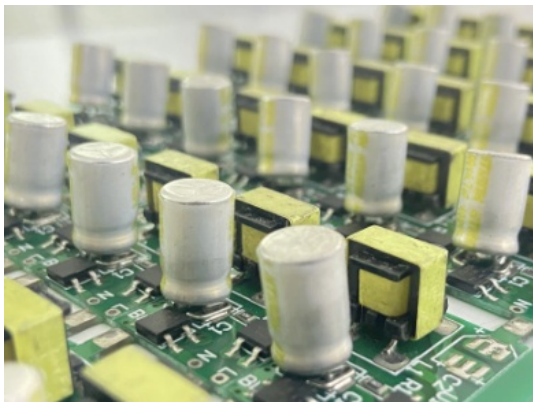
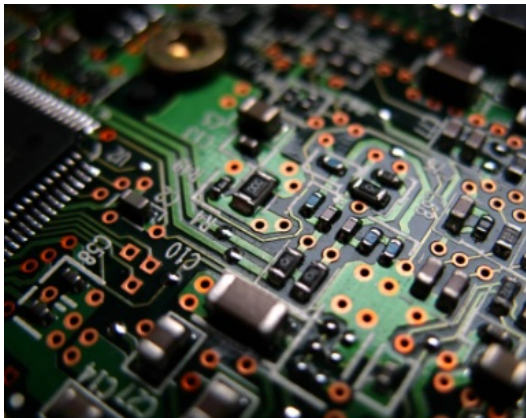
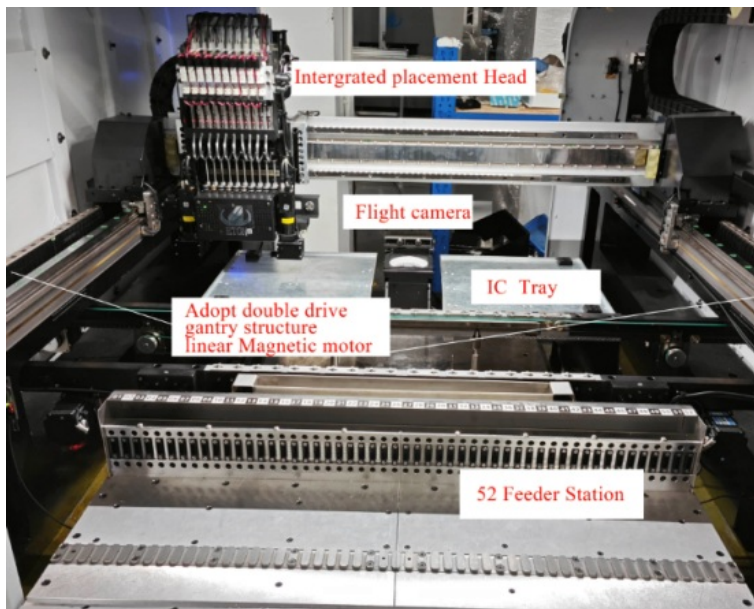
Product Packaging:
The SMT Mounting Machine is carefully packaged in a sturdy cardboard box to ensure its safety during transportation. The machine is secured with foam padding to prevent any damage during shipping. Additionally, the packaging includes clear labeling for easy identification.

Shipping:
We provide fast and reliable shipping for the SMT Mounting Machine. Once your order is processed, the machine will be carefully packed and shipped to your specified address. We work with trusted shipping partners to ensure timely delivery of your product.

FAQ:

- Q: What is the brand name of this SMT Mounting Machine?**
A: The brand name of this SMT Mounting Machine is ETON.
- Q: What is the model number of this SMT Mounting Machine?**
A: The model number of this SMT Mounting Machine is HT-E6T-600.
- Q: Where is this SMT Mounting Machine manufactured?**
A: This SMT Mounting Machine is manufactured in Shenzhen, China.
- Q: What are the available certifications for this SMT Mounting Machine?**
A: The available certifications for this SMT Mounting Machine are CE, SIRA, CCC, and ISO.
- Q: What are the accepted payment terms for purchasing this SMT Mounting Machine?**
A: The accepted payment terms for purchasing this SMT Mounting Machine are T/T, L/C, Western Union, MoneyGram, and D/P.







Shenzhen Eton Automation Equipment Co., Ltd.



0086 13670197725 (Whatsapp/Wechat)



linda@eton-mounter.com



smtmountingmachine.com

HENGFENG INDUSTRIAL AREA,ZHOUSHI ROAD NO. 739,HEZHOU COMMUNITY,HANGCHENG
STREET,BAOAN,SHENZHEN,CHINA