



12 Heads 380AC 4KW LED Driver Mounting Machine HT-E8S

Our Product Introduction

for more products please visit us on smtmountingmachine.com

Basic Information

- Place of Origin: China
- Brand Name: Eton
- Certification: CE CCC ISO
- Model Number: HT-E8S
- Minimum Order Quantity: 1
- Packaging Details: WOODEN BOX PACKAGE
- Delivery Time: 30 WORK DAYS
- Payment Terms: T/T



Product Specification

- Length: 2550MM
- Width: 1650MM
- Height: 1550MM
- Weight: 1700KG
- Power: 380AC 50Hz
- Power Consumption: 4KW
- Highlight: 4KW LED Driver Mounting Machine,
380AC LED Driver Mounting Machine,
12 Heads SMT Mounting Machine



More Images



Product Description

Multi-functional LED Light Production Line HT-E8S SMT LED Pick and Place Machine

The main function of HT-E8S

Dimension	L*W*H 2550*1650*1550MM
Weight	1250kg
Mounting Heads	8 Heads
No. of Feeder Stations	30 Stations
Components	LED, capacitors, resistors, shaped components, IC, etc.
Mounting Speed	40000CPH
Components Size	Max:18MM Min:0402
Power	380V 50Hz
X.Y Axis Driving	High-end magnetic Linear motor + servo motor

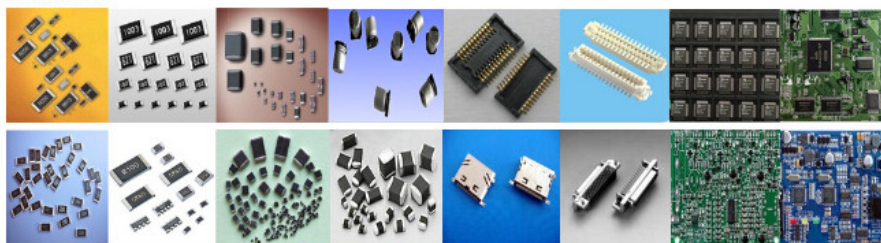
The Application of HT-E8S

HT-E8S can meet 0402 components, Max mounting height can be 36MM. It's suitable for various types of drives, power supplies, circuit boards, lenses, linear bulbs, home appliance control panels, LEDs etc.



深圳市易通自动化设备有限公司

适用元件:

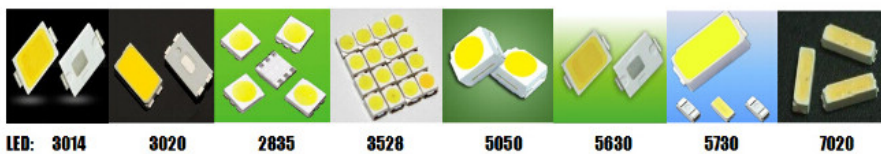


电阻

电容

异形元件

IC 元件



LED: 3014

3020

2835

3528

5050

5630

5730

7020



Shenzhen Eton Automation Equipment Co., Ltd.



0086 13670197725 (Whatsapp/Wechat)



linda@eton-mounter.com



smtmountingmachine.com

HENGFENG INDUSTRIAL AREA,ZHOUSHI ROAD NO. 739,HEZHOU COMMUNITY,HANGCHENG STREET,BAOAN,SHENZHEN,CHINA