

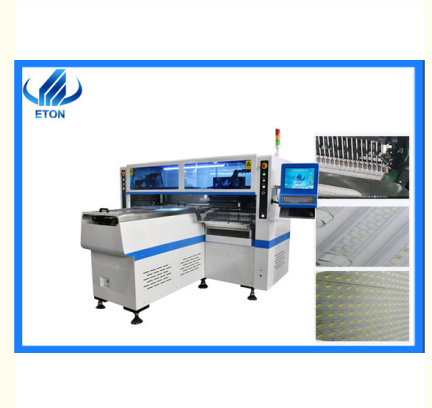


Magnetic Levitation 250000CPH LED Tube Mounting Machine 5mm Thickness

Our Product Introduction

Basic Information

- Place of Origin: CHINA
- Brand Name: ETON
- Certification: CCC, CE, SIRA
- Model Number: HT-F9
- Minimum Order Quantity: 1 set
- Price: USD 45000-50000 per unit
- Packaging Details: vacuum wooden boxes packaging
- Delivery Time: 5-8 work days
- Payment Terms: T/T
- Supply Ability: 50 sets per month



Product Specification

- Size: Max:1200*330 Mm Min:100*100 Mm
- Thickness: 0.5-5mm
- PCB Clamping: Adjustable Pressure Pneumatic
- No. Of Feeders Station: 68 PCS
- No. Nozzles: 68 PCS
- Length* Width* Height: 2700 Mm*2300 Mm *1550 Mm
- Highlight: **250000CPH LED Tube Mounting Machine, Magnetic Levitation LED Tube Mounting Machine, 5mm Thickness Pick And Place Machine**

Product Description

Super high-speed magnetic levitation LED tube pick and place machine can be grouped

Details

Capacity reach 200000 to 250000CPH ultra high-speed pick and place machine
68 heads, producing four types materials at the same time
Vision alignment, Mark correction

Feature

High precision	The feeding method is dual-motor electronic feeder, independent control is more accurate, and it has automatic compensation function
High speed	2-4 kinds of materials can be mounted at the same time, the speed reaches 200000-250000CPH
Automatic	Automatic compensation and automatic positioning for time

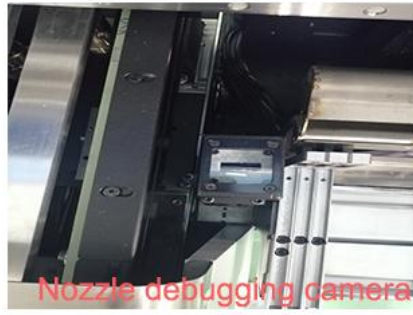
Technical parameter

HT-F9 ultra high-speed pick and place machine		
Dimension	Length* Width* Height	2700mm*2300mm *1550mm
	Total weight	1700kg
PCB	Size	Max:1200*330mm Min:100*100mm
	Thickness	0.5-5mm
	Clamping	Adjustable pressure pneumatic
	Mounting mode	Group to take and group to mount
O.S.	System	Windows 7
	Software	R&D independently
	Display	Touch screen monitor
Vision System	No. of camera	5PCS(Digital camera)
		Vision alignment, Mark correction
	Mounting precision	±0.02mm(repeat precision)
	Mounting speed	200000-250000CPH
	Components	LED3014/3020/3528/5050, capacitors, resistor, bridge rectifiers, etc
	No. of feeders station	68PCS
	No. of nozzles	68PCS
	XYZ Axis drive way	High-end magnetic linear motor + servo motor
	Feeding way	Electric feeder with double motor



HT-F9





Product

Apply to LED 3014/3020/3528/5050 and resistors, capacitors, bridge rectifiers, etc
Apply to LED tube, panel, flexible strip, linear light, etc.



Company information

Shenzhen ETON Automation Equipment Co., LTD, is a leading manufacture of automation high-speed pick and place machine focusing on “High efficiency Low consumption” in the world.



Factory

There is an industrial park covering an area of 50,000 square meters, equipped with advanced processing and manufacturing centers, and independent production, research, development and testing framework workshops, etc.



Certificate



Delivery

Shipping: it's suitable for heavy goods, and the buyer is willing to accept the arrival time of the goods at the lower cost and the convenience of the shipping.



Air freight: suitable for urgent goods.



Land transportation: suitable for inland countries, economically more affordable.

Package



Payment



T/T

Terms of payment: 30% depositing on the date of signing contract, 70% payment before delivery.

Services

1. Free professional advice: For the production of SMT machine.
2. Free technical support: 7*24 hours online technical service.
3. Free installation and training: We have established offices overseas and can arrange engineers to go directly to the factory for free installation and training.
4. Free upgrade software: The machine software is developed by our company, so we provide life-long free upgrade software for customers who purchase the machine.

FAQ

Do you have any customers in India? How many machines are there in India?

Yes, we have many big clients in India, such as RK, SURYA, FIEM, CALCOM, POLYCRB, etc. We have sold over a hundred machines to India.

and we go to the exhibition every year.

Can I visit the production site of your machines in India?

I have to ask my clients. After all, this is our customer's factory, we can't make decisions for my clients. I think that you wouldn't want your competitors to visit your manufacturing site, please understand.

Does the price include the spare parts(feeder and nozzle)?

Different clients has different requirements on spare parts, it is not fair to the clients to add in equivalent price for spare parts. So we don't add the spare parts cost on price, and price is only for machine.

What is your machines quality?

We have our own industrial park. There are production centre and R&D centre and quality inspection centre to guarantee the machines quality.



Shenzhen Eton Automation Equipment Co., Ltd.



0086 13670197725 (Whatsapp/Wechat)



linda@eton-mounter.com



smtmountingmachine.com

HENGFENG INDUSTRIAL AREA,ZHOUSHI ROAD NO. 739,HEZHOU COMMUNITY,HANGCHENG
STREET,BAOAN,SHENZHEN,CHINA