



Vision Alignment SMT Placement Machine 6mm PCB With 20 Head Bulbs

Our Product Introduction

for more products please visit us on smtmountingmachine.com

Basic Information

- Place of Origin: CHINA
- Brand Name: ETON
- Certification: CCC, CE, SIRA
- Model Number: RT-1
- Minimum Order Quantity: 1 set
- Packaging Details: Vacuum wooden box packaging
- Delivery Time: 5-8 work days
- Payment Terms: T/T
- Supply Ability: 50 sets per month



Product Specification

- Total Weight: 2200kg
- Power Consumption: 8 KW
- Transmission Speed: More Than 1500 Mm/sec
- PCB Clamping: Electric Clamping
- PCB Thickness: 0.1-6mm
- Mounting Speed: 30000-35000CPH
- Highlight: Vision Alignment SMT Placement Machine,
20 Head Bulbs SMT Placement Machine,
6mm PCB Smd Mounting Machine

Product Description

SMT multi-function placement machine with 20 head bulbs fixed by electric

Product description

Vision alignment, Mark correction

Components: LED, capacitors, resistors, shaped components, etc

Application: led bulb, panel, down light, ceiling light, street light, etc

Technical parameter

RT-1 pick and place machine		
Dimension	Length* Width* Height	1200mm*1930mm*1500mm
	Total weight	2200kg
PCB	PCB Size	Max:400*350mm Min:50*50mm
	PCB Thickness	0.1-6mm
	PCB Clamping	Electric clamping
	Mounting mode	Group picking and separate placing, separate picking and separate placing
O.S.	System	Windows 7
	Software	R&D independently
	Display	Touch screen monitor
Vision System	No. of camera	2 PCS
		Vision alignment, Mark correction
	Mounting precision	±0.04mm
	Mounting speed	30000-35000CPH
	Components	LED, capacitors, resistors, IC, shaped components, etc.
	No. of feeders station	32PCS
	No. of nozzles	10PCS
	XYZ Axis drive way	High-end magnetic linear motor + servo motor
	Feeding way	Electric feeder with double motor

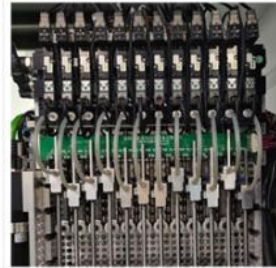




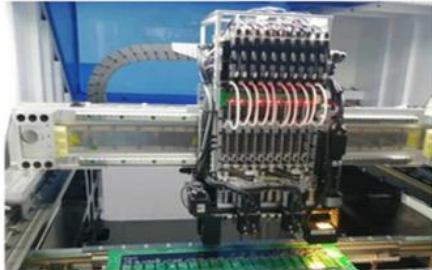
Mark camera: Do PCB board placement procedures.



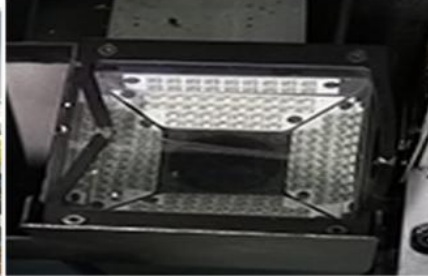
Nozzle: sucking components



Head: install the suction nozzle for reclaiming.



Magnetic linear motor: Reciprocating movement of the head through the interaction of magnetic poles.



Flight recognition camera: by photographing the components sucked by the head, calculate whether compensation is needed to paste the correct components.

Company information

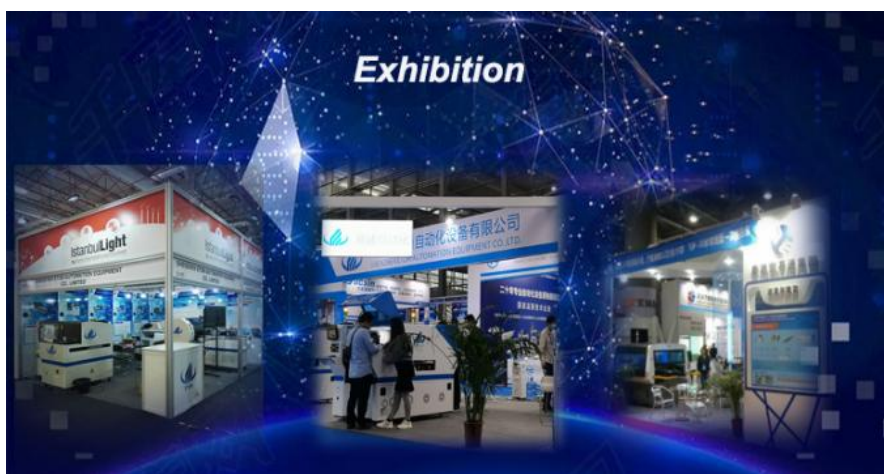
Shenzhen ETON Automation Equipment Co., LTD be located in the beautiful coastal city of Shenzhen, China. Which is the national high and new technology enterprise, double soft enterprise.

We specialize in SMT high-speed pick and place machine about ten years, and obtain a number of intellectual property technologies, including 9 invention patents, 112 practical patents, 12 software copyrights, etc





Certificate





Packaging : vacuum wooden boxes packaging

Terms of payment: 30% depositing on the date of signing contract, 70% payment before delivery.

Services

1. Free professional advice: For the production of SMT machine.
2. Free technical support: 7*24 hours online technical service.
3. Free installation and training: We have established offices overseas and can arrange engineers to go directly to the factory for free installation and training.
4. Free upgrade software: The machine software is developed by our company, so we provide life-long free upgrade software for customers who purchase the machine.

FAQ

What is the direction of transmission of machines?

The transmission direction of this machine is both direction

Is electrical control developed independently?

Yes, the electrical control is by ourselves and have exclusive patent technology.

What is the delivery date?

We will deliver the goods after 30 days' deposit.

Are you a manufacturer or trading company?

manufacturer. We have our own industrial park.



SHENZHEN ETON AUTOMATION EQUIPMENT CO., LTD

Essie

Sales Specialist

Whatsapp/Wechat: +86-13875686459

Email: essie@eton-mounter.com



Shenzhen Eton Automation Equipment Co., Ltd.



0086 13670197725 (Whatsapp/Wechat)



linda@eton-mounter.com



smtmountingmachine.com

HENGFENG INDUSTRIAL AREA, ZHOUSHI ROAD NO. 739, HEZHOU COMMUNITY, HANGCHENG
STREET, BAOAN, SHENZHEN, CHINA