



## Windows 7 Double Module Smt Mounting Machine CCC 70000CPH

### Our Product Introduction

for more products please visit us on [smtmountingmachine.com](http://smtmountingmachine.com)

#### Basic Information

- Place of Origin: CHINA
- Brand Name: ETON
- Certification: CCC\CE\SIRA
- Model Number: RT-2
- Minimum Order Quantity: 1 set
- Price: FOB USD 46000~86000/sets
- Packaging Details: Wooden case
- Delivery Time: 15~30 days
- Payment Terms: L/C, T/T
- Supply Ability: 50 pcs per month



#### Product Specification

- Warranty: 1 Year
- System: Windows 7
- Camera: 4 PCS
- Speed: 60000-70000CPH
- Head: 20 PCS
- Max PCB Size: 400\*300mm
- Highlight: Double Module Smt Mounting Machine,  
Windows 7 Smt Mounting Machine,  
Pick And Place Machine 70000CPH



## Product Description

Model	RT-2
Dimension	
Length	1195mm
Width	1930mm
Height	1500mm
PCB	
PCB length width	Max:400*300mm Min:50*50mm
PCB thickness	0.1-6mm
PCB clamping	Electric clamping
Visual system	
No.of camera	4 PCS
Mounting precision	Plus or minus 0.04 mm
Mounting speed	60000-70000 CPH
Nozzles	20 PCS
Feeder station	64 PCS
Components space	0.2mm

### Feeding system

X,Y,Z axis drive way: magnetic linear motor and servo motor

Feeding way: electric feeder with double motor

### Introducing machine of RT-2

The machine is double module magnetic linear motor multifunctional pick and place machine,totally 64 PCS feeder station and 20 heads.  
Mounting components:LED,capacitors,resistors,IC,shaped components,etc.

### Application of RT-2



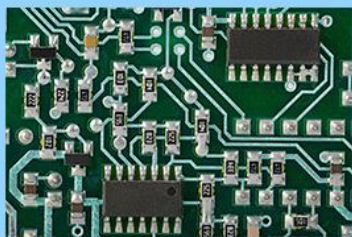
Downlight



LED bulb



Streetlight



Electric board



LED Driver

### Company Information

\*Our company ETON is the largest manufacturer of high speed pick and place machine.We start from 2011,around 8 years.ETON's original manufacturing plan, the pursuit of rigorous quality management and perfect after-sales service, provide customers with professional production lines and provide technical support.

\*Our company has obtained CCC, CE, SIRA certificates, and not only these, our company has successively won the National High-tech Enterprise, 2015 LED Technology Innovation Award, Industry Special Contribution Award and so on.

### Customer factory display



### **Transportation advantage**

By sea: it's convenience,cheapness,and strong carrying capacity

By railway: it's economical and affordable,with large transportation capacity,which is more suitable for inland countries.

By air: it's convenient and fast,which is more suitable for urgent items.

### **After-sales service**



## Our Advantages



Brand  
Guarantee



Quality  
Assurance



Quick  
Response



Quick  
Delivery

## Five-star Services



**Professional solutions:** Provide professional SMT Full line solutions



**Free Warranty:** One-year warranty factory service.



**Free Installation:** On-site free installation to ensure smooth production.



**Free Technical Training:** Professional training of operating and maintenance.



**Free Technical Support:** 7 \* 24 technical online support.



**Free Software Upgrade:** Offer free software upgrade whole lifetime

### FAQ

#### Q:Is it safe during the delivery?

A:All the machine is packed safely,by standard strong wooden carton with vacuum package.

#### Q:What is your transportation?

A:Sea transportation,land carriage and air transportation is OK.

#### Q:4.How is your training?

A:We will send our engineer to your factory to install machine and training freely.If client is India,we have service office in India,can support quickly.

#### Q:If I have no experience,The machine is easy to use?

A:Yes,our machine is designed to use easily,usually 3 to 5 days to learn how to operate.

### About transaction information

⊕Logistics transportation: we support three types of transportation by sea, land and air.

⊕standard packaging:Vacuum packaging + wooden box packaging

⊕Supply Capacity:50 units per month

⊕Term of payment: T/T

⌚ Delivery period: 30 days after deposit



**Shenzhen Eton Automation Equipment Co., Ltd.**



0086 13670197725 (Whatsapp/Wechat)



[linda@eton-mounter.com](mailto:linda@eton-mounter.com)



[smtmountingmachine.com](http://smtmountingmachine.com)

HENGFENG INDUSTRIAL AREA, ZHOUSHI ROAD NO. 739, HEZHOU COMMUNITY, HANGCHENG  
STREET, BAOAN, SHENZHEN, CHINA