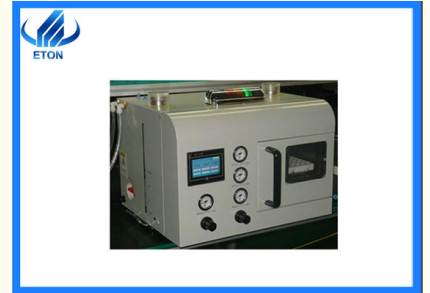




Vacuum Smt Nozzle Cleaning Machine Used In SMT Production Line

Basic Information

- Place of Origin: China
- Brand Name: ETON
- Certification: CCC, CE, SIRA
- Model Number: ET-SME24
- Minimum Order Quantity: 1 set
- Packaging Details: Vacuum wooden box conventional packaging
- Delivery Time: 5-8 work days
- Payment Terms: T/T
- Supply Ability: 50 sets per month



Product Specification

- Cleaning Liquid: Industrial Deionized Water
- Capacity Of Water Storage Tank: 1200cc
- Plug: 3-Pin
- Working Environment Humidity: 10 60%RH
- Outline Size: 655(L) X 560(W) X 475(H)
- Weight: Including Cleaning Fluid 2000cc
- Pressure: Compressed Air
- Drain Tank Water Pipe: 8tube
- Highlight: Vacuum Smt Nozzle Cleaning Machine,
Vacuum SMT Nozzle Cleaner,
1200cc Smt Nozzle Cleaning Machine

Product Description

Vacuum Smt Nozzle Cleaning Machine Used In SMT Production Line

High-quality vacuum nozzle cleaning machine used in SMT production line

Description

Principle:

The suction nozzle cleaning machine adopts a unique mechanical design. It uses fluid mechanics to break the water and produce a very small high-pressure water mist.

It forms a powerful kinetic energy jet on the suction nozzle at the sonic speed ($v = 360\text{m/s}$), forms a continuous energy field above the suction nozzle to be cleaned, and thoroughly smashes the dirt on the surface and inside (since the suction nozzle is placed independently, it will not damage the suction nozzle during the cleaning process). After cleaning, it will not damage the suction nozzle. During the process, the cleaning solution (deionized water or distilled water) is automatically discharged directly.

Structure:

Machinery: imported 304 stainless steel is used for key parts of the whole machine, and imported 316 stainless steel is used for special parts to ensure that the whole machine will not rust due to the use of water, thus affecting the service life of the equipment and other safety hazards;

Pneumatic: using imported SMC pneumatic components to better ensure stable and efficient work efficiency;

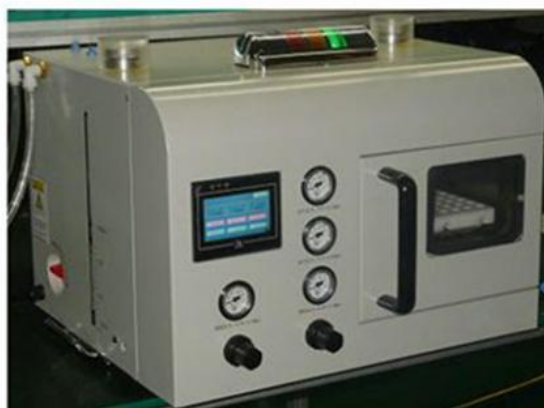
Control: the machine adopts high-quality touch screen human-machine interface and PLC control.

Technical parameter

pressure	pressure	compressed air
	Intake pressure setting	0.5 0.55MPa
	Injection pressure setting	0.35 0.38MPa
	Nozzle injection pressure	≤0.4MPa
Tube	Intake manifold	12tube
	Drain tank water pipe	8tube
Cleaning liquid	Cleaning liquid	Industrial deionized water
	Liquid consumption	≤300cc/h(5cc/min)
	Capacity of water storage tank	1200cc
Power Supply	Power Supply	AC220 240V
	Plug	3-Pin
	Consumption of electricity	≤0.1Kw
Environment	Working environment temperature	-5 (But not frozen.)
	Liquid temperature	0 (But not frozen.)
	Working environment humidity	10 60%RH
	Environmental humidity of equipment	10 60%RH
	dust	0.1mg/m³(No conductive dust)
	Corrosive gas	Not allow
Others	Outline size	655(L) x 560(W) x 475(H)
	Weight	(Including cleaning fluid 2000cc)



HT-SME24





Features

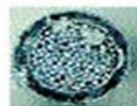
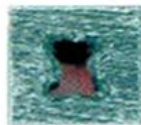
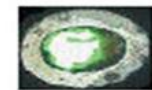
High quality touch screen human-machine interface, PLC control;
 The pneumatic part uses imported SMC pneumatic components from Japan, which ensures stable and efficient working efficiency;
 The key parts of the whole machine are all made of 304 stainless steel imported from Japan, and the special parts are made of 316 stainless steel imported from Japan, so as to ensure that the whole machine will not rust due to the use of water, thus affecting the service life of the equipment and other safety hazards.

Application

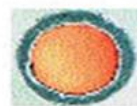
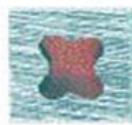
For the development of the electronics manufacturing industry, with the miniaturization of components, smaller equipment spacing, and lead-free effects, the accuracy of the patch is getting higher and higher. If the nozzle is not clean, it will affect the patch's performance on the most important factors. Precision and performance, so companies that develop in the electronics manufacturing industry, especially need nozzle cleaning machines.

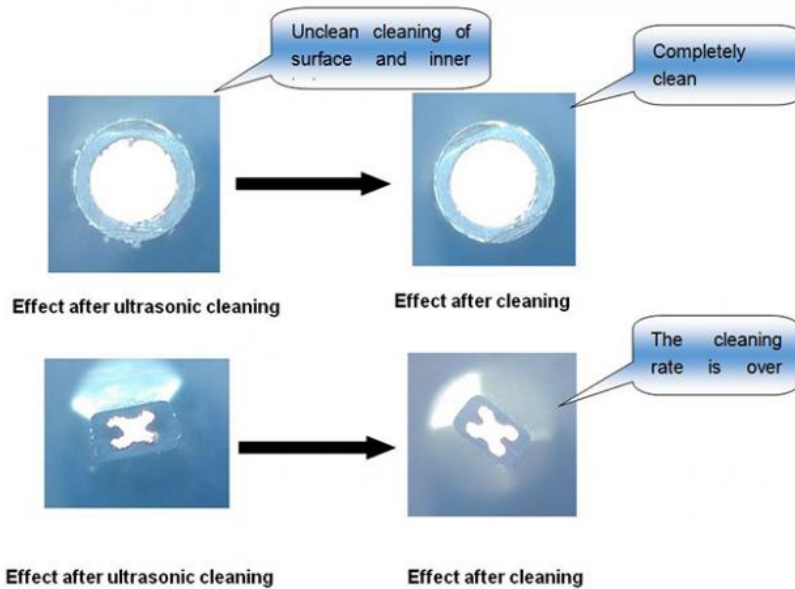
Comparison chart

Before Cleaning :



After Cleaning:





FAQ

Do you have any service offices overseas?

We have service office in India, and have India engineer in Delhi and Mumbai, can support you.

What do you do if something goes wrong with my machine?

First of all, we will let the engineer contact you online to solve, if the line can not solve, we will arrange for the engineer to your factory to solve.

Is your software interface in English?

English interface and Chinese interface are both available.

How is the training?

After purchasing our machine, first we will send you the installation and operation video, and then we will arrange engineers to go to your factory for installation and training, or you can arrange your engineers to study and operate in our factory.



Shenzhen Eton Automation Equipment Co., Ltd.



0086 13670197725 (Whatsapp/Wechat)



linda@eton-mounter.com



smtmountingmachine.com

HENGFENG INDUSTRIAL AREA,ZHOUSHI ROAD NO. 739,HEZHOU COMMUNITY,HANGCHENG STREET,BAOAN,SHENZHEN,CHINA