



## OEM ODM Pcb Pick And Place Machine LED Light Production Line

Our Product Introduction

for more products please visit us on [smtmountingmachine.com](http://smtmountingmachine.com)

### Basic Information

- Place of Origin: CHINA
- Brand Name: ETON
- Certification: CCC/CE/SIRA
- Model Number: RT-1
- Minimum Order Quantity: 1 Set
- Packaging Details: wooden box with vacuum package
- Delivery Time: 30 days after deposit
- Payment Terms: T/T
- Supply Ability: 50 sets per month

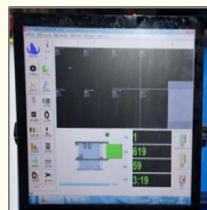


### Product Specification

- Dimention(mm): 1200\*1930\*1500
- Total Weight: 2000kg
- PCB Length Width: MAX:450mm\*350mm MIN:80\*80mm
- PCB Thickness: 0.1-6mm (if<0.6mm Need Jig)
- Mounting Precision:  $\pm 0.04$ mm
- Mounting Speed: 40000CPH
- No.of.feeders System: 32PCS
- No.of.head: 10PCS
- Components: LED Chip, Capacitors, Resistors, IC, Shaped Componets. Etc.
- Feeding Way: Electric Feeder With Double Motor.
- Highlight: OEM Pcb Pick And Place Machine ,  
OEM Pcb Pick And Place Machine ,  
ODM LED Light Production Line



### More Images



### Product Description

#### OEM ODM Pcb Pick And Place Machine LED Light Production Line

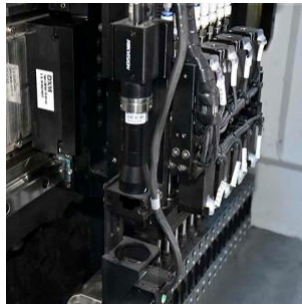
##### Advantage

Mounting compents: LED chip, capacitors, resistors, IC, shaped components. etc.  
Multifunctional pick and place machine can prduct led bulb, DOB bulb, driver, display, led tube, led street light, panel,lens, etc.  
2 pcs camera, Vision alignment flight identification, Mark correction.  
Feeding way: Electric feeder with double motor enaure more precision feeding.  
Support customization:OEM, ODM. have strong Strong manufacturing capacity.

##### High quality Accessories

Mark camera:High quality Mark camera automatically recognizes the Mark points, and the software automatically recognizes and corrects and compensates.  
Software:Strong technology support for software upgrade, also it can support remote control and multi-language customization, which is more flexible and convenient for client.  
Guide rail:Support and guide moving parts, reciprocating linear motion in a given direction, used in mechanical structures with high precision requirements.

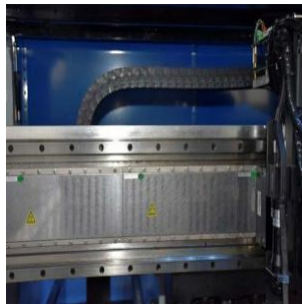
Our Product Introduction



Mark camera  
Hikvision brand from China top one



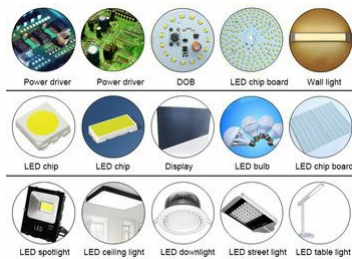
Software  
R&D by ETON, free upgrade whole lifetime



Guide rail  
Imported from Japan THK

#### Can mount products

RT-1 is a multifunctional pick and place machine, high precision can reach 0.04mm, min componets is 0402;  
suitable product: led bulb, DOB bulb, driver, display, led tube, led street light, panel,lens, etc.



#### Company Introduction

Since its establishment in 2011, ETON has been committed to the development and production of SMT placement machines and peripheral equipment in 2007.

It has more than ten years of research and development experience and LED industry service experience;

With an industrial park of 50,000 square meters, focusing on the R&D and production of the SMT industry;

45,000 square meters of workshop, to ensure that customer needs are met, and the machine is manufactured and shipped within the specified time.

Production center and R&D center and quality inspection centre are established to ensure the quality of the machines.

ETON Got large more than 80% big led lighting industry market, machine hot sell to more than 20 countries.



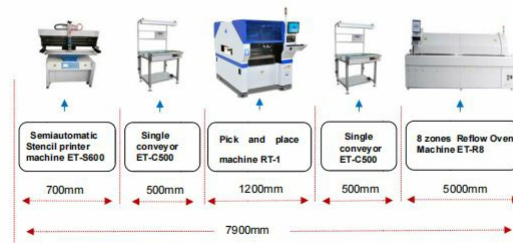
#### SMT whole line solution

ETON have good and professional service. Provide engineer Door-to-door service, support video online training, video training share, free replaced machine core part during warranty. And also we could provide professional SMT line solution. The below RT-1 semi/full-auto production line for you reference.



**Shenzhen Eton Automation Equipment CO. , LTD.**

#### ETON - RT-1 Semi-automatic Production Line



**Shenzhen Eton Automation Equipment CO. , LTD.**

#### ETON - RT-1 Full-automatic Production Line



#### Exhibition show

ETON has attend many exhibitions every year,Not only in China, Delhi, India, Mumbai, India, Karachi, Pakistan, Istanbul, Turkey, Cairo, Egypt, Moscow, Russia, Hanoi, Vietnam and other places.Our products are exported to more than20 countries, our machines are very popular in these countries.



#### Packing and delivery

All machines are packed with vacuum and wooden packing like the one in the pictures. We have different packaging ,such as : vacuum,wooden box,wooden stake, bandage etc.

Shipping: --- We ship to world wide from china mainland using air mail by EMS, UPS, DHL or TNT or as your request for parts. --- Sea shipping for machine.



## Packing and delivery



**Land transportation:** suitable for rigid machines, automatically more efficient.

**Air freight:** suitable for urgent goods.

**Shipping:** It's suitable for heavy goods, maybe the buyer is willing to accept the same price as the goods at the lowest cost and the convenience of the shipping.



#### Certification

We got 9 invention Patents, 112 practical patents,12 software copyrights.

- Electronic feeder feeding system.
- Vision alignment flight identification, Mark correction.
- Auto-optimization after coordinates generated ,etc.
- Non-stop material re-loading function.

## Our Certification

# ETON

9

### Invention Patents



12

### Software Patents



112

### Practical Patents



Shenzhen high-tech enterprise



China high-tech enterprise



The 4th China Innovation Award



Shenzhen TOP Brand



2015 LED Tech Innovation Award



Double soft enterprise

#### FAQ

1) Do you have oversea after sale service?

We can provide technical support abroad. If you have any technical problems, our engineers will provide you with timely support. Abroad, we have India and Egypt office and local engineer, etc.

2) How is the training?

After purchasing our machines, you can send your engineers to our factory, or we send our engineers to your factory, and then we will train your personnel to operate these machines. Online training and video tutorials. During the epidemic, if our engineers can't make it through, we also have special one-on-one online training and video tutorials.

3) It's hard to use the machine?

Machine is very intelligent and easy to operate, like the intelligent phone, also the software is made by our company, so we know how to make it more intelligent and operate friendly.

4) Does your machines have quality certificates?

We are high-tech enterprise with CE, SIRA, CCC awarded as "Well-know brand" and many technology patents, and have rich experience (more than 10 years) in LED light production line program.

5) Choose which mode of transportation?

Our modes of transportation are flexible, including water, land and air transportation.

6) What can you buy from us?

Automatic stencil printer, semi-automatic stencil printer, SMT pick and place machine, reflow oven, conveyor etc



Shenzhen Eton Automation Equipment Co., Ltd.



0086 13670197725 (Whatsapp/Wechat)



[linda@eton-mounter.com](mailto:linda@eton-mounter.com)



[smtmountingmachine.com](http://smtmountingmachine.com)

HENGFENG INDUSTRIAL AREA, ZHOUSHI ROAD NO. 739, HEZHOU COMMUNITY, HANGCHENG STREET, BAOAN, SHENZHEN, CHINA