



## 40000CPH SMT Mounting Machine Smt Led Production Line Pick And Place

Our Product Introduction

for more products please visit us on [smtmountingmachine.com](http://smtmountingmachine.com)

### Basic Information

- Place of Origin: CHINA
- Brand Name: ETON
- Certification: CCC/CE/SIRA
- Model Number: RT-1
- Minimum Order Quantity: 1 Set
- Packaging Details: wooden box with vacuum package
- Delivery Time: 30 days after deposit
- Payment Terms: T/T
- Supply Ability: 50 sets per month

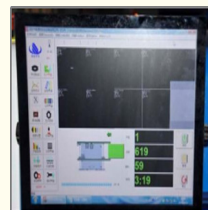
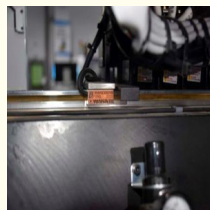


### Product Specification

- Dimention(mm): 1200\*1930\*1500
- Total Weight: 2000kg
- PCB Length Width: MAX:450mm\*350mm MIN:80\*80mm
- PCB Thickness: 0.1-6mm (if 0.6mm Need Jig)
- Mounting Precision:  $\pm 0.04$ mm
- Mounting Speed: 40000CPH
- No.of.feeders System: 32PCS
- No.of .head: 10PCS
- Components: LED Chip, Capacitors, Resistors, IC, Shaped Componets. Etc.
- Feeding Way: Electric Feeder With Double Motor.
- Highlight: 40000CPH SMT Mounting Machine,  
LED chip SMT Mounting Machine,  
40000CPH Smt Led Production Line



### More Images



### Product Description

#### 40000CPH SMT Mounting Machine Smt Led Production Line Pick And Place

Since its establishment in 2011, ETON has been committed to the development and production of SMT placement machines and peripheral equipment in 2007.

Efficient team: We provide the most systematic solution for you. The best suggestions of full SMT line equipment according to your budget and site.

OEM&ODM : Supported with an excellent RD team ETON has strong ability to OEM and

ODM for customers ,custom unique design for you with the best cost.

High quality: We have strictly quality control during all production from raw materials to the finished machine.

High efficiency : All machines parts are made by ourselves, so it's convenient to control the time schedule and quality timely.

Competitive price: We are directly manufacture of the ETON pick and place machine, so we can give you the best competitive price with high quality materials .

#### Company Introduction

Our Product Introduction



#### Production Introduction



Grating scale  
Imported from UK RENISHAW



Mark camera  
Hikvision brand from China top one



#### Parameter

Model	RT-1
Dimension	1200*1930*1500
total weight	2000kg

PCB	MAX:450mm*350mm MIN:80*80mm
PCB length width	MAX:450mm*350mm MIN:80*80mm
PCB thickness	0.1-6mm (if 0.6mm need jig)
PCB clamping	pneumatic
Mounting mode	Group picking and separately placing ;separately picking and separately placing
System	windows 7
No.of camera	2PCS accurate image recognition vision alignment, mark correction
Repeat mounting precision	±0.04mm
mounting height	standard:≤15mm(height customizable)
mounting speed	40000CPH
components	LED chip, capacitors,resistor,shaped components, etc.
components space	0.2mm
No.of feeders station	32PCS
No.of head	10PCS
air supply	independently research and development by ETON.
electrical control	independently research and development by ETON.
motion control card module 1 set	High-end magnetic linear motor+servo-motor
XYZ Axis drive way	electric feeder with double motor

#### Our service

##### Pre-sale

Provide equipment and SMT production lines that meet customers' needs according to customer needs;

Provide relevant suggestions to customers;

##### On sale

Real-time follow-up of the production situation of the customer's machine and inform the customer of the production progress

##### After sale

Arrange engineers to come to the factory to install, debug and teach free of charge;

One-year maintenance period. During the maintenance period, any parts that need to be replaced or repaired are free of charge;

Every year there is an opportunity for free machine maintenance

Visit customers regularly to understand the usage of the machine and collect customer feedback.

#### Packing detail



Film packaging



Add foam+film packaging



Unique tin foil packaging



customized Strong wood carton packing



spare parts



spare parts

#### Related machine

##### SMT production line



#### High Speed Pick And Place Machine



#### SMT Machine



#### Matters needing attention

After purchasing our machines, you can send your engineers to our factory, or we send our engineers to your factory, and then we will train your personnel to operate these machines. If our engineers can't make it through, we also have special one-on-one online training and video tutorials.

We are a professional manufacturer specialized in Screen Printer, SMT Machine, Pick and Place Machine, Reflow Oven, SMT Production line and other SMT Products.

Warranty: Every machine will be checked carefully before shipping out. Buyers should check the package once receiving. The complete machine has a warranty period of 12 months. We provide online Q/A and troubleshooting support and technical advice service. Provide one-to-one after-sale service.

Printing Speed: In the printing operation, too fast may cause print leakage; Too slow a speed can cause uneven printing. The printing speed is maintained in the range of 10-25mm/s.



We got 9 invention Patents, 112 practical patents, 12 software copyrights.

Electronic feeder feeding system.  
Vision alignment flight identification, Mark correction.  
Auto-optimization after coordinates generated ,etc.  
Non-stop material re-loading function.

## Our Certification ETON

9

Invention Patents



12

Software Patents



112

Practical Patents



Shenzhen high-tech enterprise

China high-tech enterprise

The 4th China Innovation Award

Shenzhen TOP Brand

2015 LED Tech Innovation Award

Double soft enterprise

 Shenzhen Eton Automation Equipment Co., Ltd.

☎ 0086 13670197725 (Whatsapp/Wechat) ✉ linda@eton-mounter.com 🌐 smtmountingmachine.com

HENG FENG INDUSTRIAL AREA,ZHOUSHI ROAD NO. 739,HEZHOU COMMUNITY,HANGCHENG STREET,BAOAN,SHENZHEN,CHINA