



6kw SMT Mounting Machine Magnetic Linear Motor Pick And Place Machine

Our Product Introduction

for more products please visit us on smtmountingmachine.com

Basic Information

- Place of Origin: CHINA
- Brand Name: ETON
- Certification: CCC/CE/SIRA
- Model Number: RT-2
- Minimum Order Quantity: 1 Set
- Packaging Details: wooden box with vacuum package
- Delivery Time: 30 days after deposit
- Payment Terms: T/T
- Supply Ability: 50 sets per month

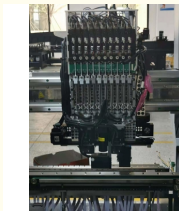
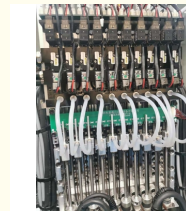


Product Specification

- Dimension: 1200*1930*2500
- Total Weight: 2500kg
- PCB Length Width: MAX:450*300mm MIN:80*80mm
- PCB Thickness: 0.1-6mm(if<0.6mm, Need Jig)
- No.of Camera: 4pcs
- Mounting Speed: 80000CPH
- No.of Feeders Station: 64pcs
- No.of Head: 20pcs
- Power Consumption: 6kw
- XYZ Axis Drive Way: High-end Magnetic Linear Motor
- Highlight: 6kw smt pick and place machine, 6kw SMT Mounting Machine, 80000 CPH Pick And Place Machine



More Images



Product Description

6kw SMT Mounting Machine Magnetic Linear Motor Pick And Place Machine

0402 component high precision high end magnetic linear motor pick and place machine

SMT placement machine model structure:

Medium-speed placement machines mostly adopt arch structure, relatively speaking, the structure is relatively simple, the area is small, and the requirements for the environment are low.

High-speed placement machines are mostly modular design (the turret structure of more than 10 or 20 years ago has been discontinued and eliminated by the times).

Production Introduction

Double module multi-function high precision pick and place machine, Double rail, can work together, also can work separately; apply to led light, cause high precision, can mount led display, led driver, lens, etc.

Our Product Introduction



Features

Software: Independent research and development by ETON, free upgrade whole lifetime, saving costs.

Automatic replenishment: If there is material missing or throwing, can fully-automatic material replenishing to save labor.

Camera recognition system: vision camera, flight identification, Mark automatic correction, Auto-optimization after coordinates generated, to ensure high mounting precision.

It is applicable to the wider range of components, and can be mounted with resistors, capacitors, IC, bridge rectifiers, inductors, terminals, diodes, transistors, large-capacity Feeder: Electric feeder with double motor, to ensure more stable and accurate feeding.

Accessories Pick and Place Machine



Grating scale



Mark camera



Spline shaft

Technical Parameter

Model	RT-2
Dimension	1200*1930*2500
Total weight	2500kg
PCB length width	MAX:450*300mm MIN:80*80mm
PCB thickness	0.1-6mm(if<0.6mm, need jig)
No.of camera	4pcs accurate image recognition vision alignment, mark correction
mounting speed	80000CPH
components space	0.2mm
No.of feeders station	64pcs
No.of head	20pcs
power	AC 380 V
transmission speed	≤1000mm/sec
transmission direction	single(left to right or right to left)
Air supply	0.4-0.6mpa, 4-6kgf/cm², 300N/Min
electrical control	independent research and development by eton
Motion control card module 1 set	independent research and development by eton
Feeding way	electric feeder with double motor.

Sale Service

Pre-sale

SMT production line solution, and some advice based on customer requirement. share the ETON industry park to customer.

On-sale

Follow the machine product, take the photo or video to customer. and other requirement.

After-sale

Free install machine and training.
 Free Software Upgrade, Offer free software upgrade whole lifetime.
 Free Warranty & Free Technical Support.
 One year warranty factory service 7*24 hours technical online support.

SMT Line solution

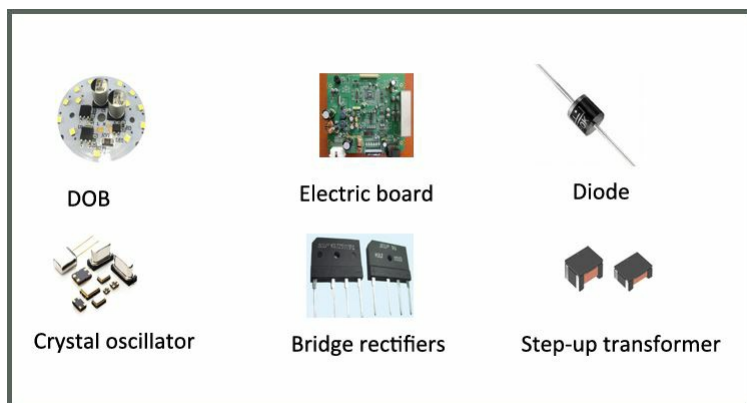
ETON is Top brand of SMT machines in China, We can provide whole smt line solution.

Full automatic smt line, the pcb on Loader, transport by conveyor, printing pcb on board by stencil printer, mounting the components on pcb by pick and place machine, finished the product, in to reflow oven, the pcb into Unloader.



Can mount components

Multifunctional pick and place machine, can mount many kinds of components, For example, Electric, Diode, Led chip, Bridge rectifiers, step-up transformer, shaped components, etc.



FAQ

Why should you buy from us not from other suppliers? We are high-tech professional manufacturer of SMT machine with more than 10 years with good quality and reputation. We have rich experience in helping client to start new factory and new line. "Professional, high-effective, cost-saving" are our advantages.
Are you a trade company or a manufacturer? We are an professional manufacturer specialized in Screen Printer, SMT Machine, Pick and Place Machine, Reflow Oven, SMT Production line and other SMT Products.
What is your delivery date? The delivery date is about 20 days upon the full payment.
What is your payment terms? 100% payment before delivery or 50% deposit in advance and the rest before shipment.
How is the warranty? 1. Every machine will be checked carefully before shipping out. Buyers should check the package once receiving. 2. The complete machine has a warranty period of 12 months from delivery and lifetime maintenance service. 3. We provide online Q/A and troubleshooting support and technical advice service. Provide one to one after-sale service.



Shenzhen Eton Automation Equipment Co., Ltd.

☎ 0086 13670197725 (Whatsapp/Wechat) ✉ linda@eton-mounter.com 🌐 smtmountingmachine.com

HENG FENG INDUSTRIAL AREA, ZHOUSHI ROAD NO. 739, HEZHOU COMMUNITY, HANGCHENG STREET, BAOAN, SHENZHEN, CHINA