



## SMT pick and place LED bulb Printer Manufacturers SMT pcb printing machine LED pcb printing

### Our Product Introduction

for more products please visit us on [smtmountingmachine.com](http://smtmountingmachine.com)

#### Basic Information

- Place of Origin: CHINA
- Brand Name: ETON
- Certification: CCC/CE/SIRA
- Model Number: RT-1
- Minimum Order Quantity: 1 set
- Packaging Details: wooden box with vacuum package
- Payment Terms: T/T
- Supply Ability: 50 sets per month



#### Product Specification

- Dimension: 1200mm\*1930mm\*1500mm
- Total Weight: 2000KG
- Feeders Station: 32PCS
- Mounting Head: 10PCS
- NO.of Camera: 2PCS
- PCB Length Width: MAX:450\*350mm MIN:80\*80mm
- Warranty: 1year
- Mounting Speed: 40,000 CPH
- Mounting Mode: Group Picking And Separately Placing, Separately Picking And Separately Placing
- Pcb Thickness: 0.1-6mm (If<0.6 Need Jig)



#### More Images



## Product Description

### Product Description

#### RT-1

RT is one of the advantageous products of our company.

With high precision and the patch covers an area of only 2.31 square meters



### Feature

1. Electronic feeder feeding system.
2. Magnetic linear motor multifunctional pick and place machine.
3. Vision alignment flight identification, mark correction.
4. Auto-optimization after coordinates generated.
5. 32 PCS feeders station, 10 PCS mounting head, mounting speed can touch 40,000 CPH

# One machine for multiple purposes

Precision manufacturing+quality assurance



For component mounting of various products, one is what you need

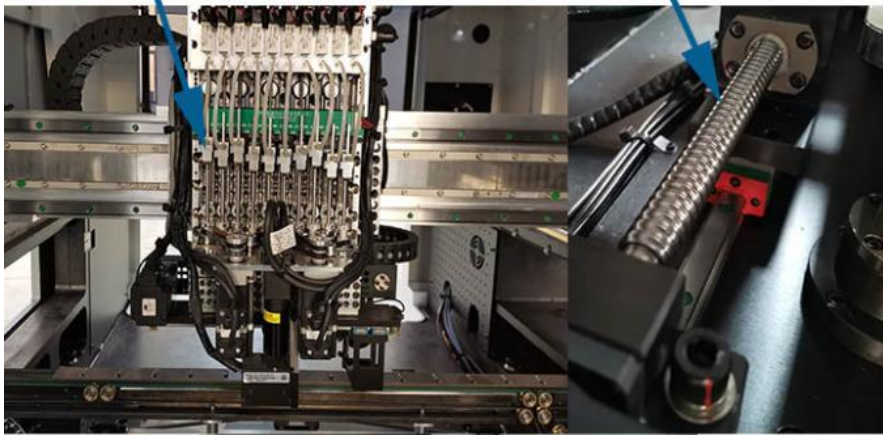
## RT-1 Technical parameter

Length	1200mm
Width	1930mm
Height	1500mm
Total weight	2000KG
Mounting mode	Group picking and separately placing,separately picking and separately placing
Mounting precision	$\pm 0.04\text{mm}$
Mounting height	Standard: $\leq 15\text{mm}$ (Height Customizable)
Mounting speed	40,000CPH
Components	LED chip,capacitors,resistor,shaped components,etc
Components space	0.2mm

# PRODUCT SHOT

Mounting head

Screw rod



servo motor



Combination of servo motor and screw rod make RT-1 has fast response, accurate positioning, no step loss



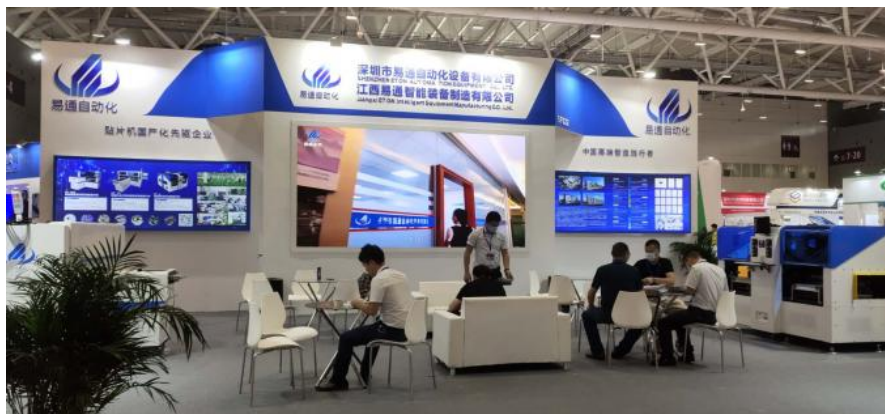
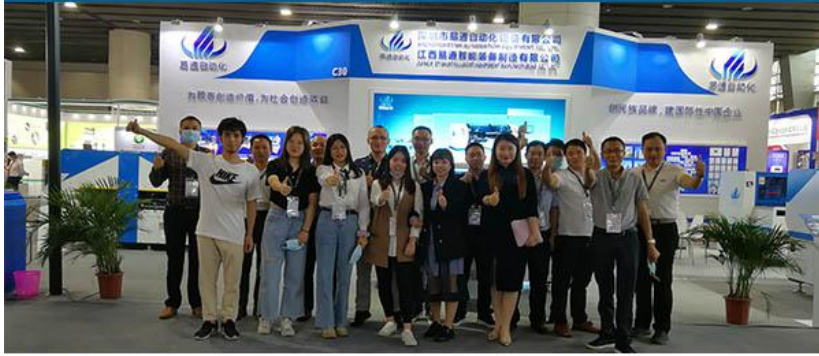
***TOP BRAND in China***

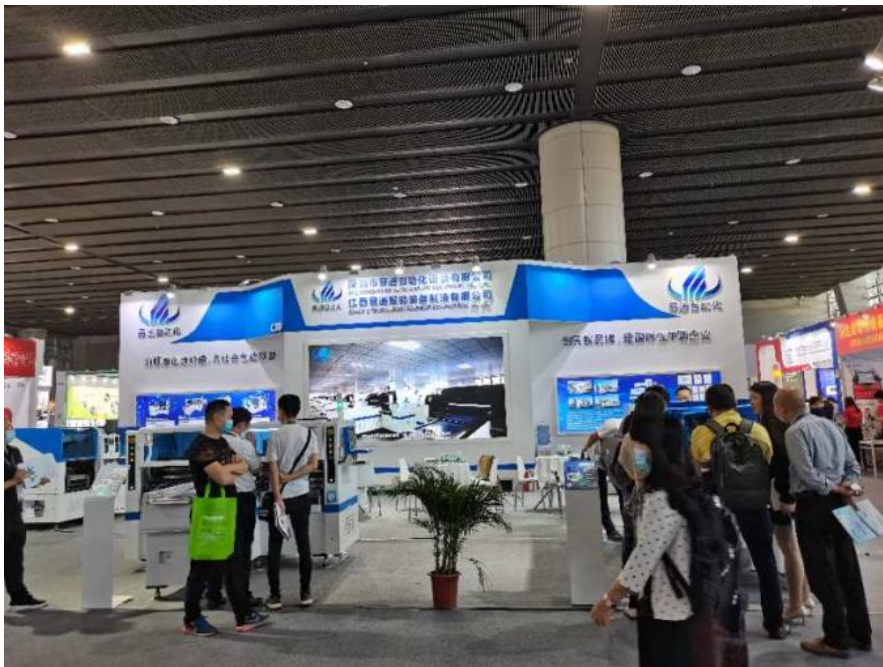
***SMT production line solution***

***50,000 squaremeters industrial park***



# Exhibition





Eton has organized and participated in exhibitions in various countries, such as Thailand, Mumbai, Delhi, Pakistan, Egypt and so on

How to prove that we are a leading SMT equipment manufacturer.

Shenzhen BCTC Technology Co., Ltd. No. 101, Yousong Road, Longhua New District, Shenzhen, Guangdong, P.R.China		
<h1>Certificate of Compliance</h1>		
<b>Certificate Number: BCTC-15126342</b>		
<b>Applicant</b>	: Shenzhen ETON Automation Equipment Co., Ltd. 2/F 5th Bld.3rd.Fuan Industrial area, FuYong, Bao'an, Shenzhen, China.	
<b>Manufacturer</b>	: Shenzhen ETON Automation Equipment Co., Ltd. 2/F 5th Bld.3rd.Fuan Industrial area, FuYong, Bao'an, Shenzhen, China.	
<b>Product</b>	: AUTOMATIC LED HIGH SPEED MOUNTER	
<b>Trademark</b>	: 	
<b>M/N</b>	: HT-X7 HT-1230-D, HT-1630-D, HT-E3, HT-E4, ET-32T, ET16T, HT-E8, HT-E3T, HT-E4T, HT-XF, HT-F9, HT-E6.	
The EUT described above has been found in compliance with the requirements of the EC MD Directive 2006/42/EC and LVD Directive 2014/35/EU with amendments.		
<b>Test Standard</b>	: EN ISO 12100: 2010 EN 60204-1: 2006+AC: 2010	
<b>Remarks:</b> The statement is based on a single evaluation of one sample of above mentioned products. It does not imply an assessment of the whole production. The manufacturer should ensure that all products in series production are in conformity with the product sample detailed in the report.		
		
This certificate of conformity is based on a single evaluation of the submitted sample(s) of the above mentioned product. It does not imply an assessment of the whole product and relevant. Directives have to be observed. Tel: 400-788-9558 0755-33019988 Http://www.bctc-lab.com Http://www.bctc-lab.com.cn		
		





## Carefully Packaging System

Three step packaging, waterproof, moisture-proof, anti-collision and safe arrival



## FAQ



### **\*How is the training?**

After purchasing our machines, you can send your engineers to our factory, or we dispatch our engineers to your factory, and then we will train your personnel to operate these machines. Online training and video tutorials. During the epidemic, if our engineers can't make it through, we also have special one-on-one online training and video tutorials.

### **\*Do you have oversea after sale service?**

We can provide technical support abroad. If you have any technical problems, our engineers will provide you with timely support.

Abroad, we have India and Egypt office and local engineer, etc.

### **\*Is it hard to use these machines?**

Machine is very intelligent and easy to operate, like the intelligent phone, also the software is made by our company, so we know how to make it more intelligent and operate friendly.

### **\* Does your machines have quality certificate?**

That's it ,and we have our own industrial park. There are production centre and R&D centre and quality inspection centre to guarantee the machine quality.

### **\* How about the warranty of the machine?**

One year warranty factory service for free.

### **\*English version for these machine?**

English interface and Chinese interface are both available.

### **\*What's the terms of payment?What about the trade term?**

T/T,and you can choice FOB Shenzhen

### **\* What's your delivery date?**

The delivery date is about 20 days upon the full payment.

### **\*Can we customize the machine?**

We support the height of custom mounted components



**Shenzhen Eton Automation Equipment Co., Ltd.**



0086 13670197725 (Whatsapp/Wechat)



[linda@eton-mounter.com](mailto:linda@eton-mounter.com)



[smtmountingmachine.com](http://smtmountingmachine.com)

HENGFENG INDUSTRIAL AREA,ZHOUSHI ROAD NO. 739,HEZHOU COMMUNITY,HANGCHENG  
STREET,BAOAN,SHENZHEN,CHINA