



Double module multifunction visual camera high speed LED chip mounter

Our Product Introduction

for more products please visit us on smtmountingmachine.com

Basic Information

- Place of Origin: CHINA
- Brand Name: ETON
- Certification: CCC/CE/SIRA
- Model Number: RT-2
- Minimum Order Quantity: 1 set
- Packaging Details: wooden box with vacuum package
- Delivery Time: 5~8 work days
- Payment Terms: L/C, T/T



Product Specification

- Warranty: 1 Year
- Name: SMT Chip Mounter
- Application: M4 M1 I PULSE SMT Pick And Place Machine
- Power Supply: 380AV 50HZ
- Product Name: Automatic SMT Mounting Shooter
- Weight: 2500kg
- Mounting Speed: 80000CPH
- Dimension: 1200*1930*1500mm
- Feeders: 64PCS
- Pcb Thickness: 0.1~0.6mm (If < 0.6mm Need Jig)

Product Description

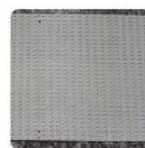
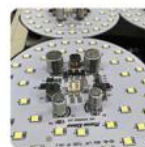
Double module multifunction visual camera high speed LED chip mounter

Product discription

RT-2 is double module magnetic linear motor multifunctional pick place machine,It is the PCB board that does not move and the head moves. It is suitable for mounting high components and small board products. It can mount bulb, downlight, street lamp, driving circuit board, etc.



RT-2



Dimension	1200*1930*1500mm
Weight	2500kg
PCB length width	450*350mm 80*80mm
PCB thickness	0.1~0.6mm(If<0.6mm need jig)
PCB clamping	pneumatic
Mounting mode	group picking and separately placing,separately picking and separately placing
NO.of camera	4 PCS
Mounting precision	±0.04mm
Mounting speed	80000CPH
NO.of feeders station	64PCS

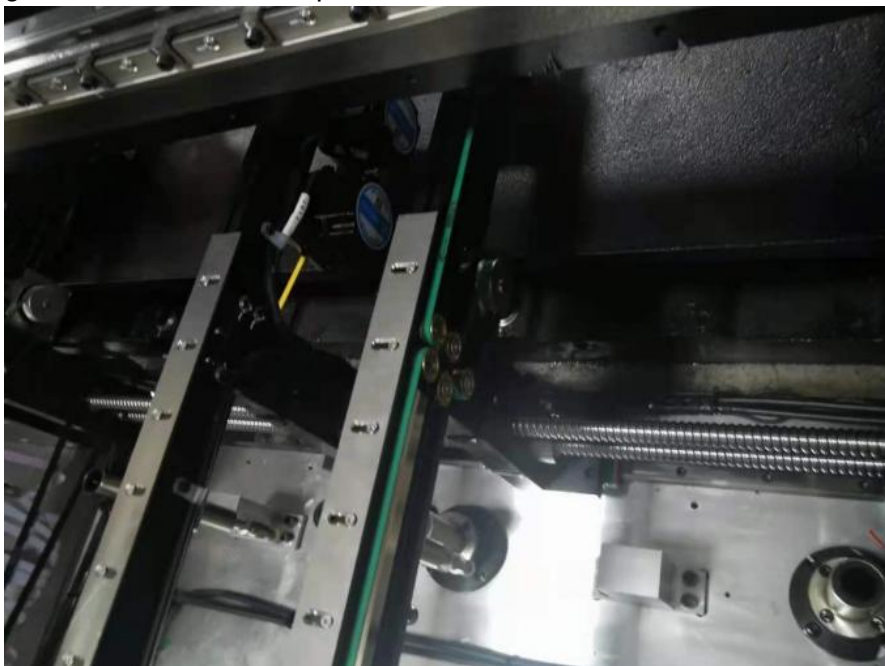
Detail description

Mounting head:RT-2 is a dual-mode group, with a total of 20 suction nozzles. Each module is controlled by a set of independent programs, and both sides are independent of each other. One module has 10 suction nozzles, which can be attached with LED chip, capacitors, resistors, IC and

shaped components.



Screw rod: The function of the screw rod is to convert the rotary motion of the servo motor into linear motion, so as to drive the mounting head to move back and forth on the linear guide rail to mount components.



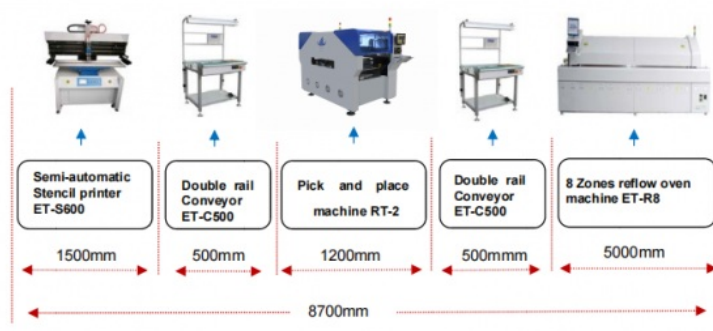
Drag chain:Wrapping the line to ensure the translation of the line. Reduce wear and prolong service life.



Production line

Whether you want the whole production line or a single machine, we can provide you with products.

ETON - RT-2 Semiautomatic production line



ETON - RT-2 Full-automatic Production Line



Peripheral equipment

Double rail conveyor: It is used for the connection between SMT production lines. It can also be used for buffer, inspection, test of PCB or manual insertion of electronic components.



Solderpaste printer machine: It is a kind of equipment that leaks the solder paste or patch glue onto the PCB pad to prepare for the welding of components.



RT-2 pick and place machine:Accurately install the surface assembled components to the fixed position of PCB.



Reflow oven:Reflow soldering melts the patch adhesive, so that the surface assembled components and PCB board are firmly bonded together.



Packing

Vacuum packaging and wooden cases are adopted to protect your purchased products from reaching the destination .



Company introduction

Shenzhen ETON automation equipment Co., Ltd., founded in 2011, is a company focusing on the research and development of SMT high-speed mounter and SMT peripheral automation equipment Manufacturing and process solution provider of production, sales and services. The company mainly focuses on multi-function machine, patch machine and special machine patch machine. It is mainly used for a variety of products, such as flexible lamp, bulb machine, and so on. The main reason for this difference is the different mounting technology. The mounting technology of special machine is group taking and group pasting. The multi-function machine can realize group take and paste and take and paste, because each head is controlled by an independent motor.



Certificate



Exhibition

IAbroad: Thailand Exhibition, Turkey exhibition, India Mumbai exhibition,

India Delhi exhibition, Pakistan exhibition, Egypt exhibition, etc.
 IDomestic :Guangzhou Guangya Exhibition, Shanghai Munich exhibition
 and Chongqing led exhibition.etc.



Honours client



FAQ

1:Are you a factory or trading company?

A:We are a professional manufacturer of mouter.And we have our own brand mouter production line.

2:Do you provide installation service?

A:We have engineer in India, Turkey, Egyp .

3:What is your delivery date?

A:The delivery date is about 20 days upon the full payment.

4:Does the price include nozzles and feeders?

A:We don't include nozzles and feeders,because each customer requires different nozzles and feeders.

5:Does your company only buy Mounter?

A;We also provide Send board machine ,pcb un-loader ,Semi-automatic stencil printer,automatic stencil printer,conveyor,pick and place machine.



Shenzhen Eton Automation Equipment Co., Ltd.



0086 13670197725 (Whatsapp/Wechat)



linda@eton-mounter.com



smtmountingmachine.com

HENGFENG INDUSTRIAL AREA,ZHOUSHI ROAD NO. 739,HEZHOU COMMUNITY,HANGCHENG
STREET,BAOAN,SHENZHEN,CHINA