



High Speed SMT Mounter Machine 380VAC 50HZ 2 sets Camera for PCB

Our Product Introduction

for more products please visit us on smtmountingmachine.com

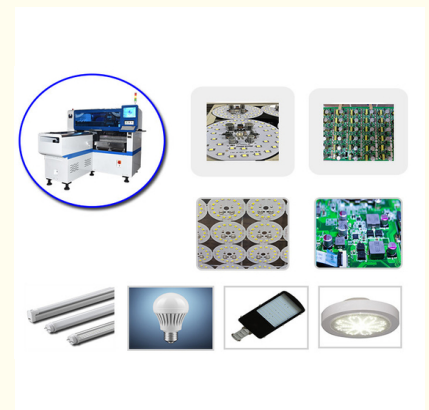
Basic Information

- Place of Origin: China
- Brand Name: ETON
- Certification: CCC, CE, SIRA
- Model Number: HT-E8S-1200
- Minimum Order Quantity: 1 set
- Packaging Details: vacuum package, wooden case
- Delivery Time: 30 days
- Payment Terms: T/T
- Supply Ability: 50 sets/month

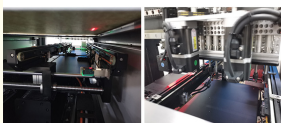


Product Specification

- Dimension: 2550*1650*1550mm
- Weight: 1700kg
- PCB Size: Max 1200*500mm
- PCB Thickness: 0.5~5mm
- Camera: 2 Sets
- Mounting Precision: 0.04mm
- Power: 380AC 50HZ
- Warranty: 1 Year
- Highlight: High Speed SMT Mounter Machine,
380VAC SMT Mounter Machine



More Images



Transport guide rail

Responsible for PCB transmission and bearing parts

Product Description

LED High speed suitable for PCB size max 1200*500mm smt mounter machine

Product introduction

The PCB size suitable for max 1200*500mm

Imported camera 2 sets, vision for the flight identification, Mark correction

Adopt high-end magnetic linear motor and servo motor, high speed pick and place machine

Software independent research and development by ETON

Product feature

Application: power drive, electric board, lens, DOB bulb, linear bulb, household appliance etc

Mounting components: LED chip, capacitors, resistors, lens, IC, shaped components, etc

Component: Min. size 0402 Max. height 15mm

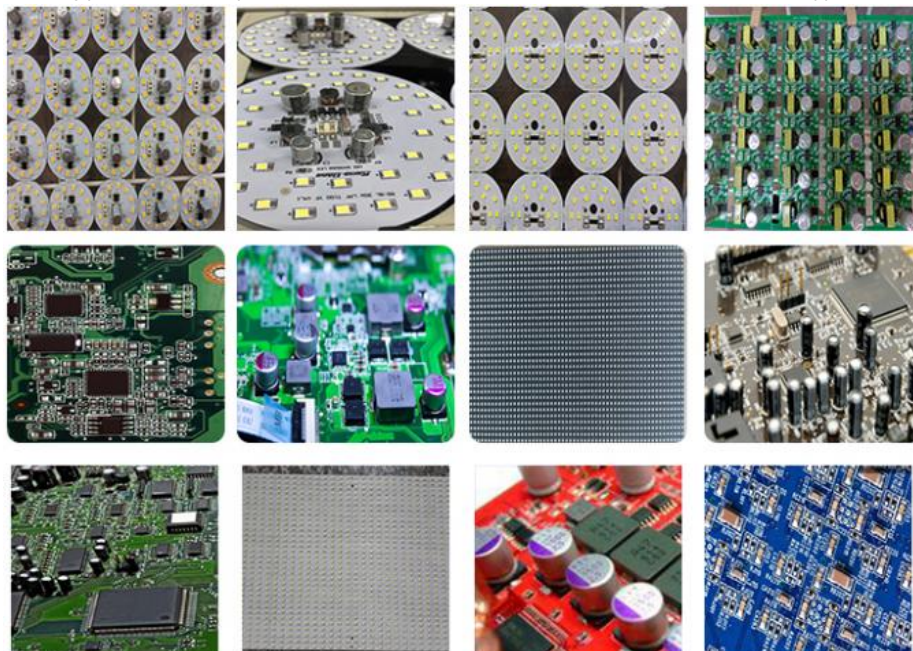
Machine parameter

Dimension	2550*1650*1550mm
PCB thickness	0.5-5mm
No. of camera	2sets
Mounting precision	±0.04mm
Mounting height	<15mm
Component space	0.2mm
Power consumption	4kw
Feeder	28pcs

Application

Suitable for mounting LED chip, capacitors, resistors, lens, IC, shaped components, etc

Mounting products such as power drive, electric board, lens, DOB bulb, linear bulb, household appliance etc.



Company profile

Shenzhen ETON Automatic Equipment Co., Ltd., was founded in 2011, it is a manufacturing and process solution provider focusing on R&D, production, sales and service of SMT high-speed pick and place machines and SMT peripheral automation equipment.



Exhibition

We often participate in India Mumbai exhibition, India Delhi exhibition, Pakistan exhibition, Thailand Exhibition, Turkey exhibition and so on, but we have not participated in the exhibition in recent years due to the epidemic.



Service



FAQ

Q: Why do you choose our product?

our product quality is guaranteed, and we have overseas local engineers, can arrange door to door installation.

Software lifetime free upgrade

Free installation and training

Provide 1-2 times a year free for machine repair, after the warranty period.

Q: Is the machine free of charge?

A: Yes. Our warranty for the whole machine is one year, but in addition, we provide customers with free maintenance once or twice a year.

Q: This is the first time I use this kind of machine, is it easy to operate?

A: There is English manual or guide video that show you how to use machine. If you still have any question, please contact us by e-mail/ Skype/ phone/ wechat/ online service.

Q: How about the quality of your products?

A: We have more than 10 years of experience in this industry, the quality of products is guaranteed, the products are popular at home and abroad, and have won the trust of many customers.

Q: Do you have offices and local engineers in overseas?

Yes, we have established offices and local engineers in Egypt, Turkey and India, etc, which can quickly provide door-to-door service.



Shenzhen Eton Automation Equipment Co., Ltd.



0086 13670197725 (Whatsapp/Wechat)



linda@eton-mounter.com



smtmountingmachine.com

HENG FENG INDUSTRIAL AREA, ZHOUSHI ROAD NO. 739, HEZHOU COMMUNITY, HANGCHENG STREET, BAOAN, SHENZHEN, CHINA