



Single module high precision auto online drive40000 CPH SMT mounting machine

Our Product Introduction

for more products please visit us on smtmountingmachine.com

Basic Information

- Place of Origin: CHINA
- Brand Name: ETON
- Certification: CCC/CE/SIRA
- Model Number: RT-1
- Minimum Order Quantity: 1 set
- Packaging Details: vacuum packaging and wooden cases
- Delivery Time: 5~8 work days
- Payment Terms: L/C, T/T



Product Specification

- Warranty: 1 Year
- Applicable Components: LED Chip, capacitors, resistpr, shaped Components, etc
- Name: SMT Pick And Place Machine
- Power Supply: 380AV 50HZ
- Weight: 2000kg
- Mounting Speed: 40000 CPH
- Type: Automatic
- Usage: SMT Mounting Machine
- Dimension: 1200*1930*1500
- Feeders: 32PCS

Product Description

Module high precision auto online drive 90000 CPH SMT mounting machine

Product description

RT-1 is a multi-function SMT placement machine. The maximum PCB board size is 400*350mm, and the minimum is 50*50mm. The components suitable for mounting are LED, resistors and capacitors, IC, terminals, inductors, diodes, transistors, transformers, coils, rectifiers, transformer.

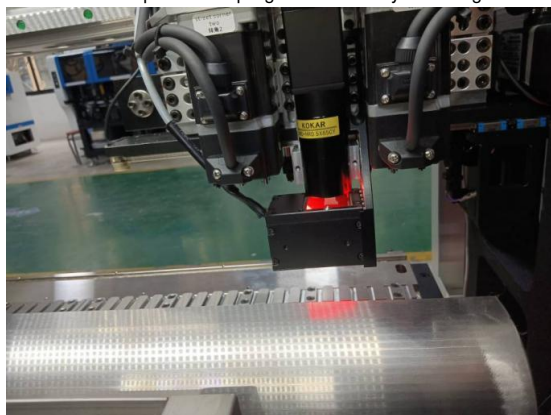


Dimension	1200*1930*1500mm
Total weight	2000kg
PCB Length width	450*350mm 80*80mm
No.of camera	2PCS
Mounting precision	±0.04mm
Mounting speed	40000CPH
PCB Thickness	0.1~6mm
No.of head	10pcs
No.of feeders station	32Ppcs
Feeding way	electric feeder with double motor

Detailed description

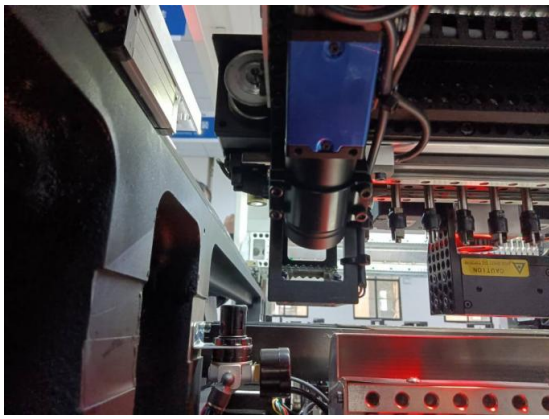
MARK Camera

The PCB board placement program is done by scanning the MARK point as a reference.



The flight recognition camera

Take a photo of the head to pick up the components, compare the placement program done with the MARK camera before, and calculate whether it needs to be compensated to paste the components.



Production line

We can recommend the right production line for the product you are producing and your needs.

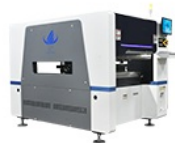
RT-1 semi-automatic production line



Semi-automatic
printer machine



conveyor



pick and place machine
RT-1



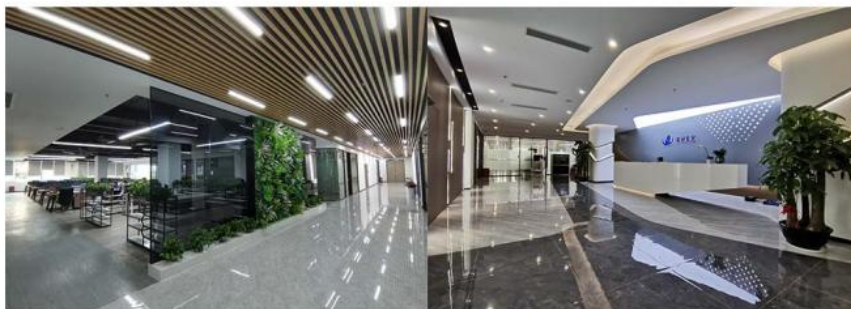
conveyor



Reflow oven

Company profile

Famous brand of SMT pick and place machine
Products are sold overseas
Have own engineers in Turkey and India
It has branches
The total area is 50000 square meters

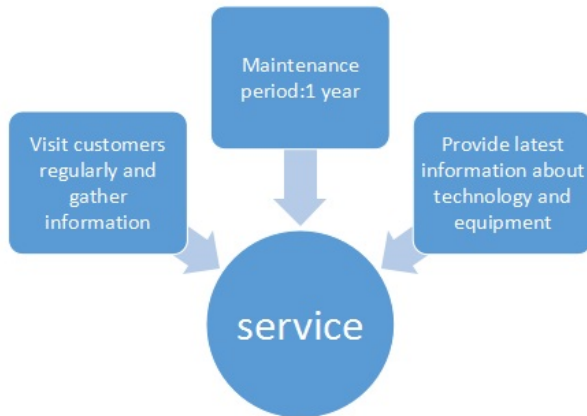


Packing&Service

First step:Using film packaging
Second step:vacuum packing
Last step:Wooden box



First step → second step → last step



FAQ

1:Does your company only buy Mounter?

A;We also provide Send board machine PCB un-loader, conveyor, semi-automatic stencil printer and automatic stencil printer.

2.Is the conveyor just have one size?

A:The general size of the connecting conveyor is 500 / 600 / 1200 / 1400 / 1500mm, and the supporting size of the connecting conveyor is generally larger than that of the PCB.

3. Which payment method do you support?

A:L/C and T/T.

FAQ



Shenzhen Eton Automation Equipment Co., Ltd.



0086 13670197725 (Whatsapp/Wechat)



linda@eton-mounter.com



smtmountingmachine.com

HENGFENG INDUSTRIAL AREA,ZHOUSHI ROAD NO. 739,HEZHOU COMMUNITY,HANGCHENG STREET,BAOAN,SHENZHEN,CHINA