



RT-1 SMT LED bulb printer manufacturers pick and place machine Automatic HIGH SPEED printing machine

Our Product Introduction

for more products please visit us on smtmountingmachine.com

Basic Information

- Place of Origin: China
- Brand Name: ETON
- Certification: CCC/CE/SIRA
- Model Number: RT-1
- Minimum Order Quantity: 1 Set
- Packaging Details: wooden box with vacuum package
- Payment Terms: T/T
- Supply Ability: 50 sets per month



Product Specification

- Name: SMT Pick And Place Machine RT-1
- Warranty: 1 Year
- Power Supply: 380AC 50HZ
- Weight: 2000KG
- Mounting Speed: 40000CPH
- Dimension: 1200*1930*1500
- Feeders: 32
- Pcb Thickness: 0.1-6MM(If<0.6mm Need Jig)
- Nozzle Type: 3014,3528,5050,customized Nozzles
- PCB Length Width: Max:450*350 Min:80*80



More Images

One machine for multiple purposes



Product Description

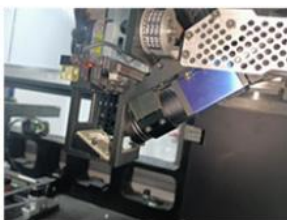
ETON company recommends this RT-1 to you.

As one of our company's best-selling machine, it is a multi-functional high-speed SMT mounter, which can mount components with a model greater than or equal to 0402 with high precision. Under the optimal conditions, the product can be pasted at the speed of 40000 CPH.

In addition to being the main SMT Mounter in the production line, it can also cooperate with other mounting machines to improve production efficiency

**RT-1**

RT-1 Component introduction

**Mounting head****Flight recognition
camera****Drag chain****linear guide rail****Linear motor****Feeder station**

RT-1





Can we customize the machine?

We support the height of custom mounted components

Does your machines have quality certificate?

That's it ,and we have our own industrial park. There are production centre and R&D centre and quality inspection centre to guarantee the machine quality.

Is it hard to use these machines?

Machine is very intelligent and easy to operate, like the intelligent phone, also the software is made by our company, so we know how to make it more intelligent and operate friendly.



Shenzhen Eton Automation Equipment Co., Ltd.



0086 13670197725 (Whatsapp/Wechat)



linda@eton-mounter.com



smtmountingmachine.com

HENGFENG INDUSTRIAL AREA,ZHOUSHI ROAD NO. 739,HEZHOU COMMUNITY,HANGCHENG STREET,BAOAN,SHENZHEN,CHINA