



Shenzhen Eton Automation Equipment Co., Ltd.
smtmountingmachine.com

1200x500MM SMT Mounter Machine High Precision LED SMT Line Pick And Place Machine

Our Product Introduction

for more products please visit us on smtmountingmachine.com

Basic Information

- Place of Origin: CHINA
- Brand Name: ETON
- Certification: CCC/CE/SIRA
- Model Number: HT-E8S-1200
- Minimum Order Quantity: 1 Set
- Packaging Details: wooden box with vacuum package
- Payment Terms: T/T
- Supply Ability: 50 sets per month

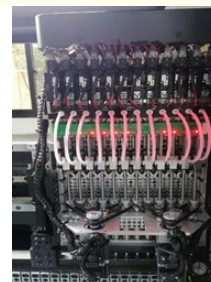
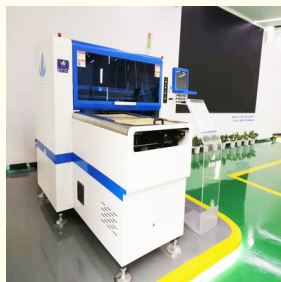


Product Specification

- Dimention: 2550*1650*1550
- Total Weight: 1700kg
- PCB Length Width: Max 1200*500mm Min 100*100mm
- PCB Thickness: 0.5-5mm
- System: Windows 7
- Software: R&D Independently
- No.of Camera: 2 Sets Of Imported Camera
- Mounting Speed: 45000CPH
- Components: LED Chip, Capacitors, Resistor, IC, Shaped Components.etc.
- Electrical Control: Independent Research And Development By Eton.
- Highlight: windows 7 system SMT Mounter Machine, SMT Mounter Machine High precision, SMT Line Pick And Place Machine



More Images



Product Description

1200*500 MM High precision led smt line pick and place machine

SMT placement machine change line operation precautions:

- A. When the order is completed, all feeders should be unloaded from the machine, all materials should be removed, and all materials, sundries and dust of the machine should be cleaned; at the same time, the feeders should be cleaned;
- B. The operator should return all the remaining materials to the material clerk, prepare the new order materials and put them on the feeder;
- C. Technicians or designated personnel will replace the equipment program, re-adjust the equipment (PCB positioning), and the operator will load the material according to the production program. After the material is loaded, it must be confirmed by IPQC for a second time;
- D. The first piece of production will be produced by the technicians and confirmed that there is no quality abnormality (no deviation, missing stickers, wrong iron, etc.), and then the first piece will be checked by IPQC;

1. Production Introduction- HT-E8S-1200

1. Multifunctional pick and place machine.
2. Component: Min size 0402, Max height: 15mm
3. Mounting components: LED chip, capacitors, resistors, lens, shaped components, etc.
4. Application: power driver, lens, electric board, DOB bulb, linear bulb, household appliance, etc.
5. Non-stop material re-loading function

Multi-Functional HT-E8S-1200



45000CPH



ShenZhen ETON Automatic Equipment Co.,Ltd

52000 square meters industrial park

More than 20 years of R & D experience

9 invention patents,12 software copyrights and 112 practical patents

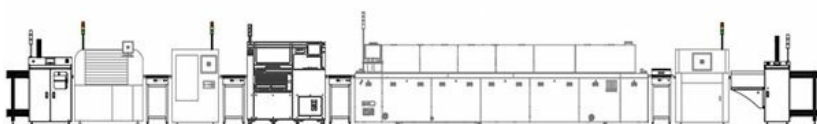


HT-E8S-1200

Application



Main part



2.Company Details

- 1.ETON is a manufacturing and process solution provider focusing on R&D, Production, sales and service of SMT high-speed pick andplace machines and SMT peripheral automation equipment.
- 2.Strong manufacturing capabilities,Product,Patents and Honor,Five star service,Large market share,Exhibition,Packing and Delivery
- 3.Own Industry Park is located in Jiujiang, Jiangxi, with 7 buildings,over 50000 square meters.
- 4.We have pick and place machine:multi-functional, high-speed pick and place machine, SMT Peripheral; our pick and place machine suitable for kinds of product, such as: led bulb, DOB bulb, Tube, power driver, down lights, street lights, led display,household appliance,etc. Machines are widely used in a variety of products.





**CNC workshop
Powder Spraying Polishing**



**Pick and Place Machine
Assembly Workshop**



**Full SMT line
Solution Showroom**



**Powder Spraying
Workshop
Spraying the workpiece**



**Boring & Milling Machine
For rough machining of
large parts**

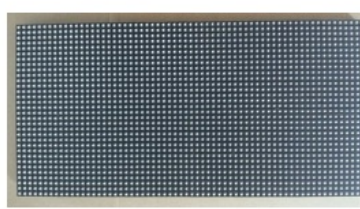


**Laser Cutter
Sawing the workpiece**

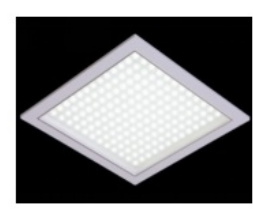
3. Application kinds of product - one machine can do kinds of product



Linear Bulb



LED Display



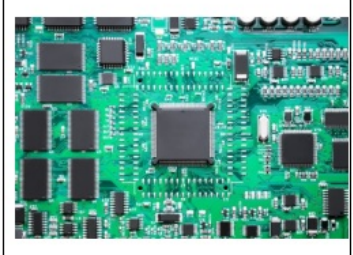
Panel Light



LED Down-light



Street Light



Power Driver



LENS



Corn Lamp

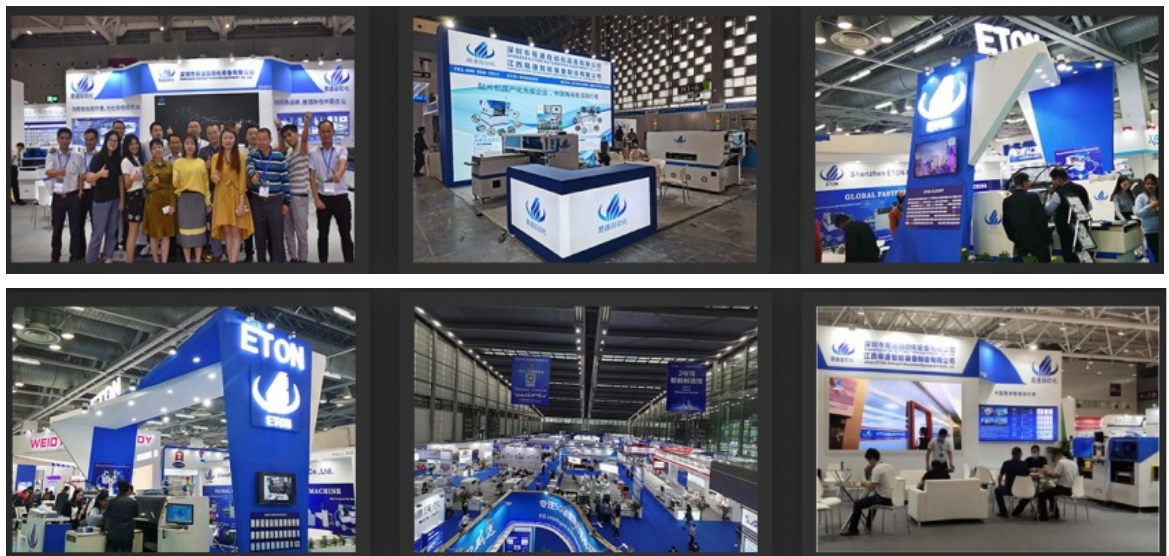


LED Tube

4. Certificate - ETON



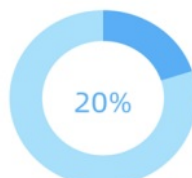
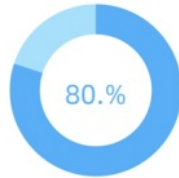
5. Large Market





Market

ETON annual sales volume exceeds 800 million.



Chinese Market

In China, more than 80% of the large listed factories are our partners.

Foreign market

ETON products are exported to more than 20 countries and regions in the world, such as Russia, South Korea, Turkey, Egypt, Brazil, India, etc.

FAQ

Is your software interface in English?

English interface and Chinese interface are both available.

Do you have oversea after sale service?

We can offer technical support abroad. If you have any technical problem, our engineers will support you promptly.

It's hard to use the machine?

Machine is very intelligent and easy to operate, like the intelligent phone, also the software is made by our company, so we know how to make it more intelligent and operate friendly.

Why should you buy from us not from other suppliers?

We are high-tech professional manufacturer of SMT machine with more than 10 years with good quality and reputation. We have rich experience in helping client to start new factory and new line. "Professional, high-effective, cost-saving" are our advantages.

What is your delivery date?

The delivery date is about 20 days upon the full payment.

How is the warranty?

1. Every machine will be checked carefully before shipping out. Buyers should check the package once receiving.
2. The complete machine has a warranty period of 12 months from delivery and lifetime maintenance service.
3. We provide online Q/A and troubleshooting support and technical advice service. Provide one to one after-sale service.

Any details, please feel free contact to me. thanks!

Find me on Whatsapp: +86 19880662073 and let's discuss more. Thank you.



Shenzhen Eton Automation Equipment Co., Ltd.



0086 13670197725 (Whatsapp/Wechat)



linda@eton-mounter.com



smtmountingmachine.com

HENG FENG INDUSTRIAL AREA, ZHOUSHI ROAD NO. 739, HEZHOU COMMUNITY, HANGCHENG STREET, BAOAN, SHENZHEN, CHINA