



Automatic visual pick and place machine led bulb lamp assembly line & led bulb assembly line

Our Product Introduction

for more products please visit us on smtmountingmachine.com

Basic Information

- Place of Origin: CHINA
- Brand Name: ETON
- Certification: CCC/CE/SIRA
- Model Number: HT-E8D-1200
- Minimum Order Quantity: 1 Unit/Units
- Packaging Details: Vacuum packing in wooden case
- Delivery Time: 15-30days
- Payment Terms: L/C, T/T
- Supply Ability: 50 Unit/UNits per month



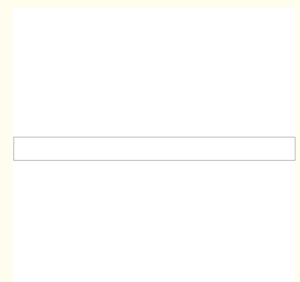
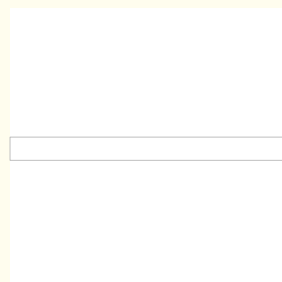
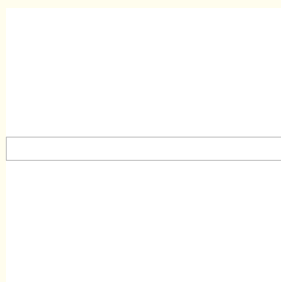
Product Specification

- Dimension (L*W*H): 3150*2250*1650 Mm
- Total Weight: 2500kg
- 2500kg: Max:1200*300mm Min:100*100mm
- PCB Thickness: 0.5-5mm
- No.of Feeders Station: Double Module 48 PCS
- Double Module 48 PCS: Double Module 48 PCS
- Mounting Speed: 90000 CPH
- Conveyor Transmission: Conveyor Transmission

APPLICATION



More Images



Product Description

Automatic visual pick and place machine led bulb lamp assembly line & led bulb assembly line

Product description

Double-module multifunctional pick and place machine

Vision for the flight identification, Mark correction

Components: LED, capacitors, resistors, IC, shaped components, etc(Max:17mm, Min:0402)

Application: power driver, electric board, lens, linear bulb, tube, etc

Features

Dual system, dual module multi-functional pick and place machine

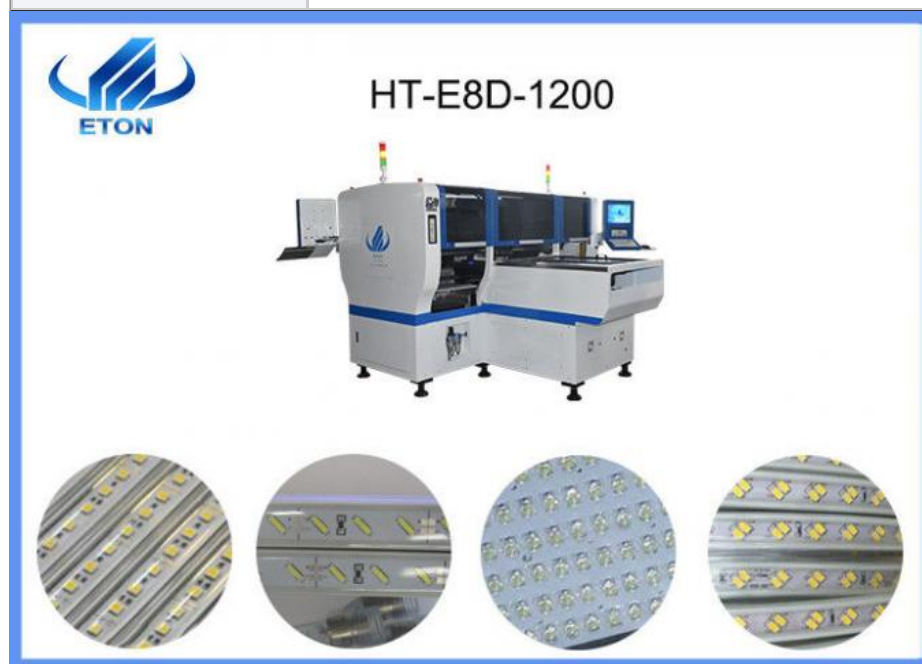
Components: Min. size: 0402, Max. height: 15mm

Mounting components: LED, capacitors, resistors, IC, shaped components, etc.

Exclusive patented technology: electronic feeder feeding system, non-stop material re-loading function

Technical parameter

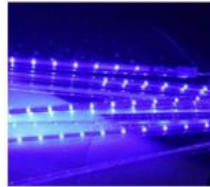
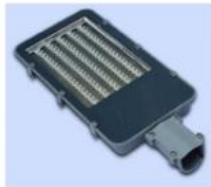
Dimension (L*W*H)	3150*2250*1650 mm
Total weight	2500kg
PCB Length width	Max:1200*300mm Min:100*100mm
PCB thickness	0.5-5mm
PCB clamping	Adjustable pressure pneumatic
No.of feeders station	Double module 48 PCS
No.of head	Double module 24PCS
Mounting speed	90000 CPH
Conveyor transmission	Max length 1200 mm



SMT LED production process

process	step	details
Step1	Solder paste printing	The solder paste is printed on the PCB pad through the stencil of the printer

Step2	Mounting machine	Mount the lamp beads or other components on the designated position on the PCB
Step3	Reflow oven	Melt the solder paste to make it adhere to the mounting components
Step4	conveyor	Inspection of placement and soldering quality



Company information

Shenzhen ETON Automation Equipment Co., Ltd. was established in 2011. It is a national high-tech enterprise dedicated to the research and development, production, sales and after-sales service of SMT high-speed placement machines. The company has always been committed to providing customers with "professional, efficient, and low-consumption" SMT automatic placement machines.



Comprehensive Building



Workshop area



Sheet metal workshop



Rack placement library



Parts warehousing



Assembly workshop

Service

Provide you with a complete SMT solution.

Provide the most professional technical services.

Has extensive experience in SMT factory settings.

Can solve any problems related to SMT.

24 hours free online service

Free installation teaching when engineers arrive

FAQ

1. Do you have any customers in India? How many machines are there in India?

Yes, we have many big clients in India, such as RK, SURYA, FIEM, CALCOM, POLYCRB, etc. We have sold over a hundred machines to India and we go to the exhibition every year.

2. Can I visit the production site of your machines in India?

I have to ask my clients. After all, this is our customer's factory, we can't make decisions for my clients. I think that you wouldn't want your competitors to visit your manufacturing site, please understand.

3. Does the price include the spare parts (feeder and nozzle)?

Different clients have different requirements on spare parts, it is not fair to the clients to add an equivalent price for spare parts. So we don't add the spare parts cost on price, and price is only for machine.

4. What is your machines quality?

We have our own industrial park. There are production centre and R&D centre and quality inspection centre to guarantee the machines quality.



Shenzhen Eton Automation Equipment Co., Ltd.



0086 13670197725 (Whatsapp/Wechat)



linda@eton-mounter.com



smtmountingmachine.com

HENGFENG INDUSTRIAL AREA, ZHOUSHI ROAD NO. 739, HEZHOU COMMUNITY, HANGCHENG
STREET, BAOAN, SHENZHEN, CHINA