



40000CPH SMT Line Chip Mounter 10 Nozzles High Precision PCB Assembly Machine

Our Product Introduction

for more products please visit us on smtmountingmachine.com

Basic Information

- Place of Origin: CHINA
- Brand Name: ETON
- Certification: CE, CCC, SIRA
- Model Number: YT101S
- Minimum Order Quantity: 1 set
- Packaging Details: vacuum adsorption, wooden packing
- Delivery Time: 30 days after receive the down-payment
- Payment Terms: T/T
- Supply Ability: 50 sets per month

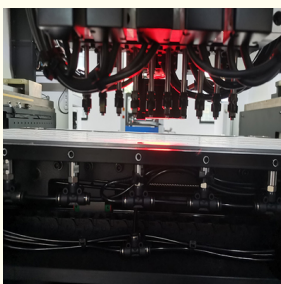


Product Specification

- Name: Pick And Place Machine
- Module: YT101S
- Min. Mount: 0201 Components
- Mounting Speed: Optimal Speed 40000CPH
- No.of Nozzle: 10PCS
- Local Service: India, Egypt, Vietnam
- Highlight: **40000CPH SMT Line chip mounter , double head SMT chip mounter , 10PCS nozzles PCB assembly machine**



More Images



Product Description

SMT Line chip mounter 40000CPH with 10 nozzles high precision PCB assembly machine

Machine features

1. YT 101S is one of the newly launched YT series products from ETON.
1. High-speed Multi Modular Head (non replace modular head).Apply to 0201~40*40mm tape reel package.
2. Improve recognition performance, size up to 40*40mm, apply to BGA or CSP etc.
3. PCB Max size:500*350mm.
4. 10 heads, the optimum speed reached 40000cph.
5. Feeding way: Intelligent double head feeder.

Machine parameter

Model	YT101S
Dimension(L*W*H)	2154*1376*1762mm
Weight	1700kg
PCB length width	Max size:500*350mm
PCB thickness	0.5~4.5mm
Repeat precision	±0.02mm
Mounting height	≤20mm
No.of camera	2PCS
	Vision alignment, Mark correction
Components range	Min 0201~40*40MM Packages and IC etc
Rail	Rail 1 is fixed
Power consumption	380AC50HZ 4KW
Optimum Mounting speed	40000CPH
No. Of feeders station	16 PCS ,tape reel packages 32 PCS
No. Of head	10 PCS
Feeding way	Intelligent double head feeder.

Company introduction

- (1)Shenzhen ETON automation equipment CO.,Ltd. was founded in 2011 and Jiangxi Intelligent industrial Park was used in 2020. So far, ETON has more than 11 years experience.
- (2)ETON is the leading manufacturer of global photoelectric high speed pick and place machine and enjoys a good reputation around the world.
- (3)The produces have exported more than 20 countries and regions, including Egypt, India,Turkey, Russia, Brazil, South Africa and so on.
- (4)ETON has five level management policy:sincere business, focus on R&D, manufacturing intentions, considerate service, customer trust.
- (5)ETON also keep "no worries" after-sales service, and the products are supported to personal customization, specialist sale always track the production and transportation of equipment.

ETON

50000sqm industrial park



ETON Advantages

Efficient team: The best suggestions of full SMT lineequipment according to your budget and site.

Competitive price: We are directly manufacture of the ETON pick and place machine, so we can give you the best competitive price with high quality materials.

High quality: We have strictly quality control during allproduction from raw materials to the finished machine.

High efficiency: All machines parts are made by ourselves, so it's convenient to control the time schedule and quality timely.

Exhibition

Our company participates in many exhibitions at home and abroad every year, You will see ETON's booth in some well-known large-scale exhibitions in China, including large-scale exhibitions held in Shenzhen, Guangzhou, Chongqing, Shanghai and other places. Foreign exhibitions include exhibitions in more than 20 countries including Mumbai, Delhi, Egypt, Turkey, and Vietnam.



For More convenient service may I know your whatsapp or email?

Any details, please feel free contact to me. thanks!

Find me on Whatsapp or wechat: [+8613827425982](https://wa.me/8613827425982) and let's discuss more. Thank you!

Contact me

David whatsapp/wechat/Tel: +86 13827425982

QQ: 3061340868

E-mail: david@eton-mounter.com



Shenzhen Eton Automation Equipment Co., Ltd.



0086 13670197725 (Whatsapp/Wechat)



linda@eton-mounter.com



smtmountingmachine.com

HENGFENG INDUSTRIAL AREA,ZHOUSHI ROAD NO. 739,HEZHOU COMMUNITY,HANGCHENG STREET,BAOAN,SHENZHEN,CHINA