



80000 CPH LED Chip Mounter Double Feeder SMD Pick And Place Machine

Our Product Introduction

for more products please visit us on smtmountingmachine.com

Basic Information

- Place of Origin: China
- Brand Name: ETON
- Certification: CE,CCC,SIRA
- Model Number: YT-202S
- Minimum Order Quantity: 1 set
- Packaging Details: Packing in film package and foam cotton, and covering vacuum bag within sturdy wooden boxes.
- Delivery Time: 30 days
- Payment Terms: T/T
- Supply Ability: 50 sets per month



Product Specification

- Warranty: 1 Year
- Application: SMT Production Line
- Condition: Brand-new
- Weight: 1700KG
- Mounting Speed: 80000 CPH
- Feeders: Double Side: 20 PCS (Single Side: 10 PCS)
- Pcb Thickness: 0.5-4.5 Mm
- Positioning Accuracy: ± 0.02 Mm
- Highlight: double feeder LED chip mounter, 80000 CPH LED chip mounter, 80000 CPH SMD pick and place machine



Product Description

New innovation SMD 80000 CPH LED chip double feeder pick and place machine

Machine main features

Adopt High speed multi modular head, apply to ultra small chip 0201~40*40 mm large chip, wider component range;
 Brand new flight vision camera: Improve recognition performance, size up to 40*40 mm, apply to BGA or CSP etc;
 Vacuum sensing device: Each placement head with independent detection function, which improves the stability of the equipment and the reliability of the product;
 Ultra high speed capability: Adopt high-end magnetic linear motor, servo system and multi function modular head, the capacity increased by 25% compared with traditional machine, optimum speed reach 80000 CPH;
 Combine high accuracy Mark recognition camera with fixed flight vision camera, ensure placement accuracy;
 Off-line programming, save time of changeover cycle;
 Software AI intelligent learning function and automatic optimization function.
 Two gantry, 10 spindles*2 Gantry, total 20 spindles;
 Flexible PCB handling capabilities, double rail, both gantry can mount the same large PCB at the same time, realizing flexible production.

Machine main parameter

Model	YT-202S
PCB size	Max size: 500*450 mm(Single side) 500*300 mm(Double side) Min size: 50*50 mm
Repeat precision	±0.02 mm
Mounting height	≤20 mm
Optimal speed	80000 CPH
Component range	Min 0201~40*40 tape reel packages and IC tray feeder etc.
No.of heads	Double side: 20 pcs Single side:10 pcs

Shipping and Delivery

Shipping Way:

- By air, for sample and small package
- By sea, for large package and quantity;
- Other ways as customer requested.

Delivery Time:

Within 30 Days.



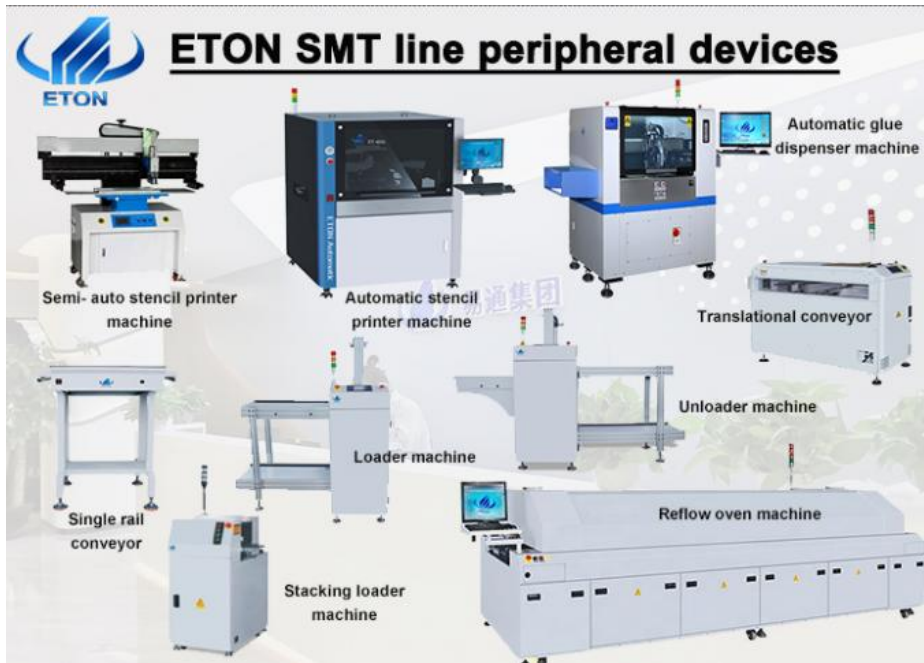
Air freight:
for urgent good, and it is the most expensive transportation way;

Land transportation:
suitable for inland countries and it is affordable;
Noah+8613632769526

Shipping:
It's suitable for heavy goods, and the convenience and lower cost of shipping which is easy for clients to accept the arrival time of the goods.

Related Machine

ETON is a leading SMT high speed pick and place machine manufacturer in China, and we also provide whole line solution with peripheral devices as stencil printer, conveyor, glue dispenser, transitional and reflow oven etc.



Market

Our products had exported to more than 30 countries and regions, including South Korea, India, Vietnam, Tunisia, Egypt, Turkey, Russia, Brazil etc. And here are some of our big customers:

SURYA, POLYCAB, FIEM, RK, GK, TECHNO LED, CALCOM, ACK, KENDAL, RangDong, UNISTAR, and so on.



Machine application



PCB



PCBA



Bulb



street light



Floodlight



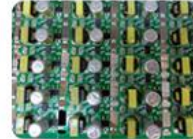
Down light



Lens



Panel light



Power driver

FAQ

Q. What is your actual speed of your products?

A. For the actual speed of the machine which is constrained by many factors, that related to the number of the components, the time to send PCB board and receive the board that will have influence on the speed when in production, and is decide for the actual products and needs.

Q. Can you accept CIF as the quoted price?

A. We only accept EXW as the quoted price for it is convenient and lower cost for both sides.

Q. Can I go and see if you have sold the equipment to India?

A. Yes, we have sold our machine in India, but for the fact we can't decide it for my customer, but I will try to contact my customer. Hope you can understand, because no one wants their competitors to visit their manufacturing site.

Q. How many products can your machine make per day?

A. The capacity of our machine is according to the real products, and the number of components on your PCB board that is important factor to figure out the actual speed of our machine with your products.

Contact me:

Whatsapp/Wechat: +8613632769526

Email: Noah@eton-mounter.com



Shenzhen Eton Automation Equipment Co., Ltd.



0086 13670197725 (Whatsapp/Wechat)



linda@eton-mounter.com



smtmountingmachine.com

HENGFENG INDUSTRIAL AREA,ZHOUSHI ROAD NO. 739,HEZHOU COMMUNITY,HANGCHENG STREET,BAOAN,SHENZHEN,CHINA