



Power Driver SMT Mouter For Min 0402 Components SMD Production Line

Our Product Introduction

for more products please visit us on smtmountingmachine.com

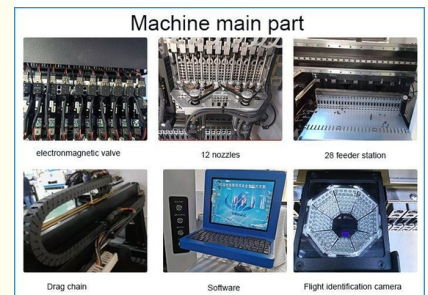
Basic Information

- Place of Origin: CHINA
- Brand Name: ETON
- Certification: CE, CCC, SIRA
- Model Number: HT-E8S-1200
- Minimum Order Quantity: 1 set
- Packaging Details: vacuum adsorption, wooden packing
- Delivery Time: 30 days after receive the down-payment
- Payment Terms: T/T
- Supply Ability: 50 sets per month



Product Specification

- Model: HT-E8S-1200
- Warranty: 1 Year
- Applicable Components: 0402
- Name: SMT Pick And Place Machine
- Application: SMD Production Line
- Condition: New
- Mounting Speed: 40000 CPH
- Feeders: 28
- Highlight: min 0402 SMT mouter,
0402 Components SMT mouter machine,
Power Driver SMT Mouter



More Images



Product Description

SMT mounter Power driver making mounter min.mount 0402 components

Machine Specification

Model	HT-E8S-1200
Dimension(L*W*H)	2550*1650*1550mm
Weight	1700kg
PCB length width	Max:1200*500mm;Min:100*100mm
PCB thickness	0.5~5mm
Mounting mode	Group picking and separately placing, separately picking and separately placing
Mounting height	<15mm(automatic changing)
Mounting speed	45000cph
Power consumption	4KW
No. Of feeders station	28 PCS single module
No. Of head	12 PCS Single module

Products Description

Single module, Automatic multifunctional SMT machine, suitable for PCB length width: max 1200*500mm min 100*100mm
The machine mounting mode is group picking and separately placing, separately picking and separately placing.
Two sets of imported cameras, vision for the flight identification, Mark correction.
Feeding way is electric feeder with double motor.

Products features

Single module magnetic linear motor multifunctional pick and place machine
Mounting components: LED chip, capacitor, resistor, lens, IC, shaped components,etc.
Component: min. Size 0402 max. Height 15mm
Application: Power drive, electric board, lens, DOB bulb, linear blub, household appliance etc.

Our market and clients

ETON is a leading pick and place machine manufacturer in China, and ETON machine have been exported more than 20 countries , such as India, Turkey, Egypt, Thailand, Vietnam, Etc. More than 70% big led lighting company are our clients,such as POLYCAB, ZTS, SKYQUAD, CEPL enterprise etc.

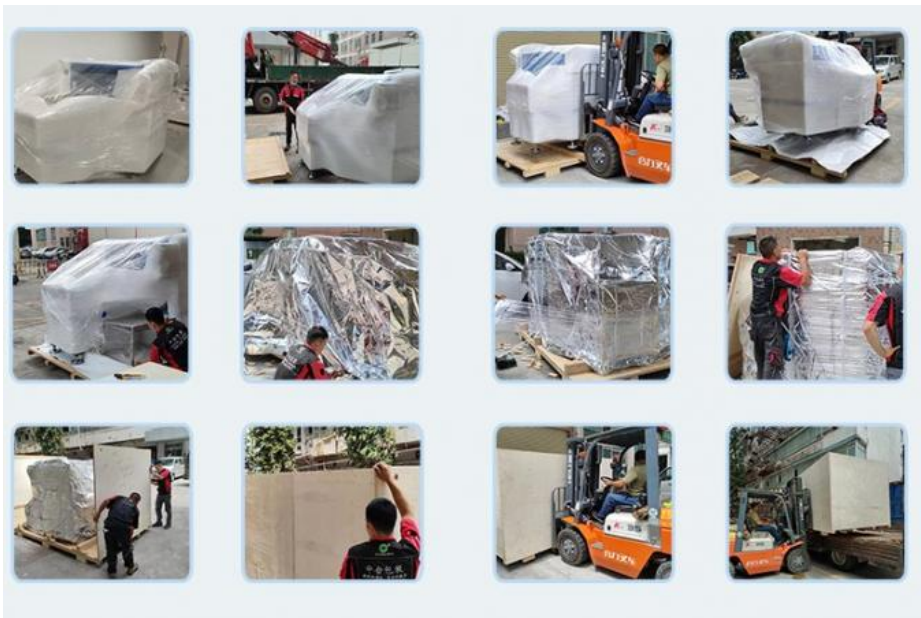


Services

- 1.Visiting customers regularly and gather information.
- 2.Provide latest information about technology and equipment.
- 3.We will provide video training online with you as long as bought machine, Which ensured you you could operate our machine.
- 4.We can send our foreign engineers to buyer's factory to install machine freely.
- 5.Any parts need to be repaired and replaced will be free during warranty(1 year).

Packing and delievery

- Step 1. Film packaging.
- Step 2. Add foam+film packaging.
- Step 3. Unique tin foil packaging.
- Step 4. customized Strong wood carton packing.



FAQ

1. Can you provide whole SMT line with me?

Of course. we can provide whole line solution if you want. We are very professional on SMT field.

2. What is the difference Between full automatic line and semi automatic line ?

SMT production line mainly include stencil printer , pick and place machine, oven machine.

The main difference between a fully automatic production line and a semi-automatic production line is whether the printing machine is a fully automatic or semi-automatic printing machine, which is more expensive than a semi-automatic production line.

3.Can we customize the machine?

Of course. All of our machine can be customized.

4.How to ensure the quality?

Final Inspection and testing before shipment. We have our own industrial park with R&D center and quality control center to ensure the quality of the machines



Shenzhen Eton Automation Equipment Co., Ltd.



0086 13670197725 (Whatsapp/Wechat)



linda@eton-mounter.com



smtmountingmachine.com

HENGFENG INDUSTRIAL AREA,ZHOUSHI ROAD NO. 739,HEZHOU COMMUNITY,HANGCHENG STREET,BAOAN,SHENZHEN,CHINA