

## High Speed SMD Mounter Min 0201 - 40\*40mm Double Module Head Pick And Place Machine

### Our Product Introduction

for more products please visit us on [smtmountingmachine.com](http://smtmountingmachine.com)

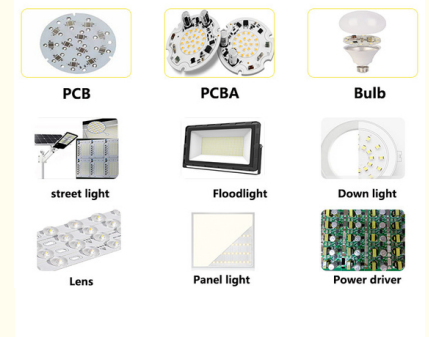
#### Basic Information

- Place of Origin: China
- Brand Name: ETON
- Certification: CE,CCC,SIRA
- Model Number: YT-20
- Minimum Order Quantity: 1 set
- Packaging Details: Packing in film package and foam cotton, and covering vacuum bag within sturdy wooden boxes.
- Delivery Time: 30 days
- Payment Terms: T/T
- Supply Ability: 50 sets per month



#### Product Specification

- Warranty: 1 Year
- Applicable Components: Min 0201~40\*40 Mm Tape Reel Packages And IC Tray Feeder Etc.
- Condition: Brand-new
- Weight: 1700KG
- Mounting Speed: 80000 CPH
- Dimension: 2788\*1686\*1375mm
- Feeders: Double Side Docking Cart Slot 32PCS,tape Reel Packages:64PCS(single Side Docking Cart Slot 16PCS,tape Reel Packages:32PCS),freely Switching Between Docking Cart And IC Tray Feeder(IC Tray Feeder:Option)
- Pcb Thickness: 0.5-4.5 Mm
- Highlight: **Min 0201 SMD mounter, Double Module SMD mounter, Module Head SMT Pick And Place Machine**



## Product Description

### New mounter SMD Min 0201-40\*40mm double module pick and place machine

#### Machine main features

Adopt High speed multi modular head, apply to ultra small chip 0201~40\*40mm large chip, wider component range;  
Brand new flight vision camera improve recognition performance, size up to 40\*40mm, apply to BGA or CSP etc;  
Vacuum sensing device: Each placement head with independent detection function, which improves the stability of the equipment and the reliability of the product;

Ultra high speed capability: Adopt high-end magnetic linear motor, servo system and multi function modular head, the capacity increased by 25% compared with traditional machine, optimum speed reach 80000 CPH;

Brand new self-developed high precision placement head;

Combine high accuracy Mark recognition camera with fixed flight vision camera, ensure placement accuracy;

I Double side docking cart slot 32PCS,tape reel packages:64PCS(single side docking cart slot 16PCS,tape reel packages:32PCS),freely switching between docking cart and IC tray feeder(IC tray feeder:Option)

Smart Double-Head tape feeder: Support YT series double head intelligent electric tape reel feeder, by optically correcting the feeding position of the component, it can achieve stable, accurate and high-speed feeding;

The placement head adopt independent vacuum detection, improve placement performance;

Off-line programming, save time of changeover cycle;

Software AI intelligent learning function and automatic optimization function.

Two gantry, 20 spindles\*2 Gantry, total 40 spindles;

Flexible PCB handling capabilities, double rail, both gantry can mount the same large PCB at the same time, realizing flexible production.

Model	YT-20
PCB size	Max size: 500*450 mm(Single side) 500*300(Double side) Min size: 50*50 mm
PCB thickness	0.5-4.5 mm
PCB clamping	Cylinder clamping, track width adjustable
Rail	2 rail, 2 gantries(Rail 1,4 are fixed rail)
Software	R&D independently
Production management MES system	Customized (Option)
Off-line programming	Available
Camera	Bottom vision camera recognition/ Flight identification camera
Repeat precision	±0.02 mm
Mounting height	≤15mm
Position mode	Optical
Optimal speed	80000 CPH
Component range	Min 0201~40*40 mm tape reel packages and IC tray feeder etc.
Position mode	Optical
No.of heads	Double side docking cart slot 32PCS,tape reel packages:64PCS(single side docking cart slot 16PCS,tape reel packages:32PCS),freely switching between docking cart and IC tray feeder(IC tray feeder:Option)
Feeding way	Intelligent double head feeder
X,Y,Z Axis drive way	High-end magnetic linear motor + Servo motor

#### Packages

Step 1: Wrap with stretch film to prevent the equipment from.

Step 2: Vacuum paper packaging and moisture-proof bag, so that the machine can be kept dry during transportation to prevent moisture.

Step 3: Use straps and triangular wood to fix the machine to prevent damage to the machine during transportation.

Step 4: Each exported machine will be equipped with sturdy export wooden boxes, to ensure that the delivered product is good.



## Package Noah+8613632769526



**Step 1:** Pack the machine in a foam cotton and stretch the film to protect the outside of it. **Step 2:** vacuum paper package and moisture proof bag, to keep dry of the machine during transportation to prevent moisture. **Step 3:** Each exported machine will be equipped with sturdy wooden boxes, to ensure the safety of the machine. **Step 4:** Transportation by trucks to the specified port. For the feeders and some spare parts usually we'll pack it separately with box.

### Market

Our products had exported to more than 30 countries and regions, including South Korea, India, Vietnam, Tunisia, Egypt, Turkey, Russia, Brazil etc. And here are some of our big customers:

SURYA, POLYCAB, FIEM, RK, GK, TECHNO LED, CALCOM, ACK, KENDAL, RangDong, UNISTAR, and so on.



**Our products had exported to more than 30 countries and regions, including South Korea, India, Vietnam, Tunisia, Egypt, Turkey, Russia, Brazil etc.**

### Machine application





**PCB**



**PCBA**



**Bulb**



**street light**



**Floodlight**



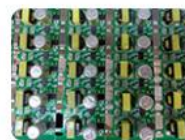
**Down light**



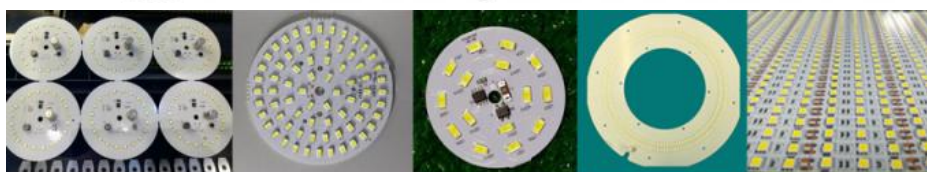
**Lens**



**Panel light**



**Power driver**



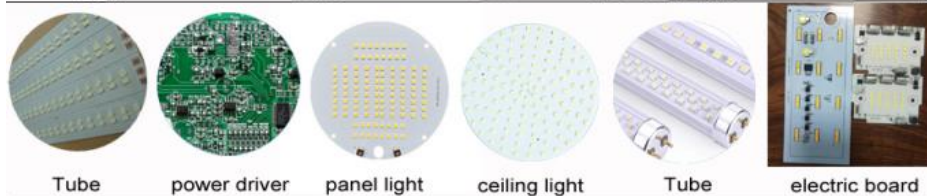
**DOB**

**bulbs**

**bulbs**

**LED Corn Light**

**flexible light strip**



**Tube**

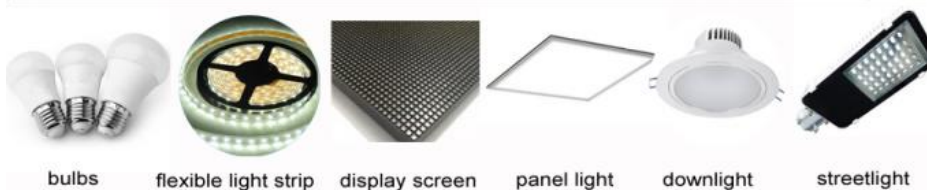
**power driver**

**panel light**

**ceiling light**

**Tube**

**electric board**



**bulbs**

**flexible light strip**

**display screen**

**panel light**

**downlight**

**streetlight**

### Shipping and Delivery

**Land transportation:** suitable for inland countries and it is affordable;

**Air freight:** for urgent good, and it is the most expensive transportation way;

**Shipping:** It's suitable for heavy goods, and the convenience and lower cost of shipping which is easy for clients to accept the arrival time of the goods.



### Air freight:

for urgent good, and it is the most expensive transportation way;



### Land transportation:

suitable for inland countries and it is affordable;

**Noah+8613632769526**



### Shipping:

It's suitable for heavy goods, and the convenience and lower cost of shipping which is easy for clients to accept the arrival time of the goods.

Q. If I need a perfect line of the machine can you supply?

A. Yes, for the requirements of a whole line for production, we have professional equipment to make up for a perfect production line for your products, on account of we have a 50000 square meters of industrial park and excellent R&D staff, which can produce 50 sets of machine per month.

Q. What is your actual speed of your products?

A. For the actual speed of the machine which is constrained by many factors, that related to the number of the components, the time to send PCB board and receive the board, etc. And is decide for the actual products and needs.

Q. How many components can your pick and place machine mount in a PCB board?

A. While this is for our clients needs and the size of the PCB board.

Q. How long is the machine maintenance period, whether it is free?

A. The maintenance period of our machine is 1 year and its free for our clients, after the maintenance period we will arrange our engineers to check and test the machine one or two times a year freely.

**Contact me:**

**Whatsapp/Wechat: +8613632769526**

**Email: Noah@eton-mounter.com**



**Shenzhen Eton Automation Equipment Co., Ltd.**



0086 13670197725 (Whatsapp/Wechat)



linda@eton-mounter.com



smtmountingmachine.com

HENGFENG INDUSTRIAL AREA,ZHOUSHI ROAD NO. 739,HEZHOU COMMUNITY,HANGCHENG  
STREET,BAOAN,SHENZHEN,CHINA