



SMT Pick and place machine 40K capacity with magnetic linear motor automatic PCB assembly

Our Product Introduction

for more products please visit us on smtmountingmachine.com

Basic Information

- Place of Origin: CHINA
- Brand Name: ETON
- Certification: CE, CCC, SIRA
- Model Number: YT101S
- Minimum Order Quantity: 1 set
- Packaging Details: vacuum adsorption, wooden packing
- Delivery Time: 30 days after receive the down-payment
- Payment Terms: T/T
- Supply Ability: 50 sets per month



Product Specification

- Warranty: 1 Year
- Condition: New
- Mounting Speed: 40000 CPH
- Applicable Components: 0201
- Name: SMT Pick And Place Machine
- Usage: SMT Mounting Machine, LED
- Pcb Thickness: 0.5-4.5 Mm
- Nozzles: 10pcs



More Images



Product Description

High Precision SMT chip mounter 40000CPH with 2 sets of camera pick and place machine

Main parameter of machine

PCB thickness	0.5-4.5mm
Repeat precision	±0.02mm
Mounting height	≤20mm
Mounting speed	40000CPH
Components range	Min 0201-40*40mm packages and IC etc
No.of head	10pcs
Feeding way	Intelligent Double head feeder

Production line

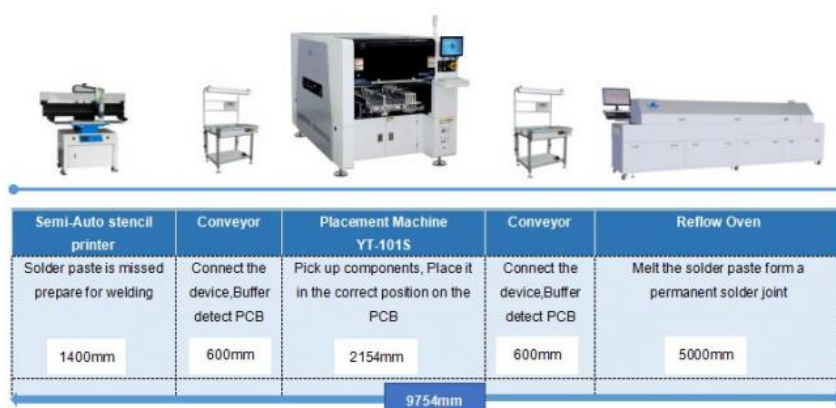
SMT Line mainly included four equipments: Stencil printer machine, Conveyor machine, Pick and place machine, Reflow oven machine. Working step as follow show:

Step 1: Printer machine print solder paste on the PCB

Step 2: Pick and place machine mounting SMD components on the PCB

Step 3: Output PCB, Conveyor convey PCB to Reflow oven machine

Step 4: Reflow oven machine soldering the components with the PCB



ETON supply whole SMT line machine, mainly included : Automatic stencil printer, Semi-automatic stencil printer, Conveyor, Pick and place machine, Reflow oven machine, Loader, Un-loader machine, PCB cleaning machine, stencil printing machine, etc.

Packaging and Delivery

All machines are packed with vacuum and wooden packing like the one in the pictures.

Shipping: --- We ship to world wide from china mainland using air mail by EMS, UPS, DHL or TNT or as your request for parts.
--- Sea shipping for machine.

Step 1. Film packaging

Prevent the machine from dust ,water, crash and shaking

Step 2. Add foam+ film packaging

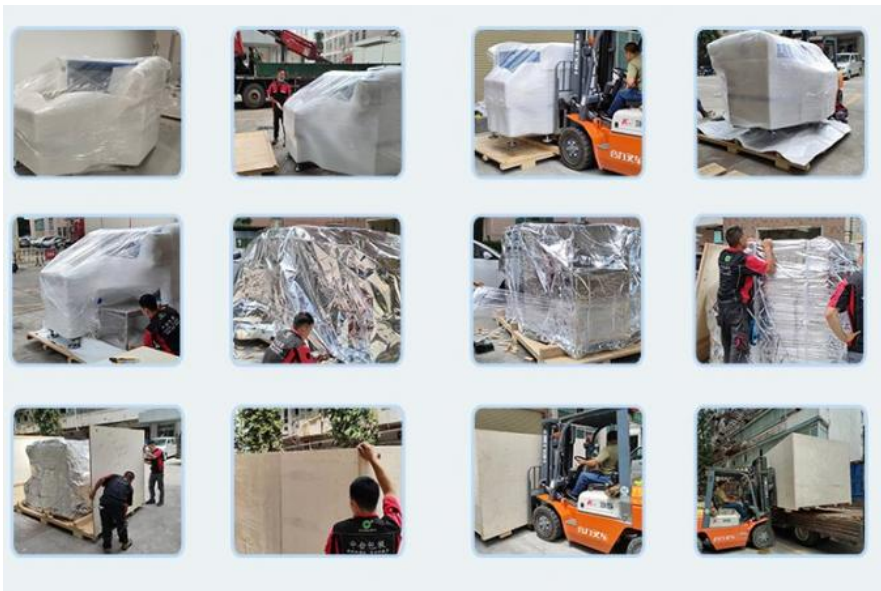
Double safe protection, Prevent the machine from crash and shaking

Step 3. Unique tin foil packaging

Add tin foil packaging can prevent the film from scratch broken.

Step 4. Customized Strong wood carton packing

The customized strong wood packing for ocean ship, The machines are fix ion the wood carton, effectively prevent collision and shock.



Certificate

Since the establishment, ETON focus on technology reach and development, obtains a number of intellectual property technologies, including **9 invention patents**, **112 practical patents**, **12 software copyrights**.

ETON is rated as "Shenzhen High-tech enterprise" "Guangdong high-tech enterprise" "China high-tech enterprise" "2015 LED Technology Innovation Award" "The 4th China LED First Innovation Award" "Industry Special Contribution Award" etc.



FAQ

Q1: What is your machine actual speed?

A1: The actual speed is influenced by many factors, such as the number of the components, the kind of products, the time of send board, etc. So we can't give you the accurate actual production capacity. Such as for RT-1, the speed of led chip mainly around 23000-25000CPH. But for driver will be different.

Q2: Does the price include spare parts(nozzle and feeder)?

A2: Different client has different requirements on spare parts, it is not fair to clients to add in equivalent price for spare parts, so we don't add the spare parts on price. And price is only for machine.

Q3: Can you support whole SMT line?

A3: Yes, we can provide whole line solution if you want. We are very professional on SMT field.

Q4: What is your machines quality?

A4: We have our own industrial park. There are production centre and R&D centre and quality inspection centre to guarantee the machine quality.

Q5: Do you have oversea after sale service?

A5: We can provide technical support abroad. If you have any technical problems, our engineers will provide you with timely support. Abroad, we have India office, Indian engineer, Egyptian office and Egyptian engineer , etc.

Contact me

David

E-mail: david@eton-mounter.com

whatsapp/wechat/Tel: +86 13827425982



Shenzhen Eton Automation Equipment Co., Ltd.



0086 13670197725 (Whatsapp/Wechat)



linda@eton-mounter.com



smtmountingmachine.com

HENGFENG INDUSTRIAL AREA,ZHOUSHI ROAD NO. 739,HEZHOU COMMUNITY,HANGCHENG
STREET,BAOAN,SHENZHEN,CHINA