



12 Heads SMD Mounting Machine Automatic SMT Placement Machine 45000CPH E8S

Our Product Introduction

Basic Information

- Place of Origin: CHINA
- Brand Name: ETON
- Certification: CCC, CE, RoHS
- Model Number: HT-E8S
- Minimum Order Quantity: 1
- Price: FOB USD 30000~50000/sets
- Packaging Details: Our packing is made of wooden box with vacuum package, and we promise to deliver the goods within four weeks after payment.
- Delivery Time: 30 work days after deposit
- Payment Terms: T/T, L/C
- Supply Ability: 50 sets per month



Product Specification

- Dimension: 2550*1650*1550mm
- Feeders: 36 PCS
- Speed: 40000CPH
- Application: PCB, Power Driver, electric Board, lens, linear Bulb, household Appliance Etc.
- Power Consumption: 4KW
- Warranty: 1 Year
- Total Weight: 1250kg
- System: Windows7
- Software: R&D Independently
- Nozzles: 12PCS
- Highlight: **12 Heads SMD Mounting Machine,
Electric Board SMD Mounting Machine,
lens SMT Placement Machine**

Product Description

12 heads smt pick and place equipment 450000cph chip mounter machine

E8S placement machine features

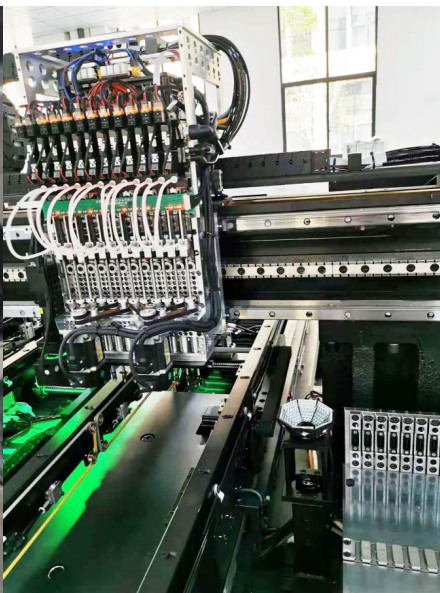
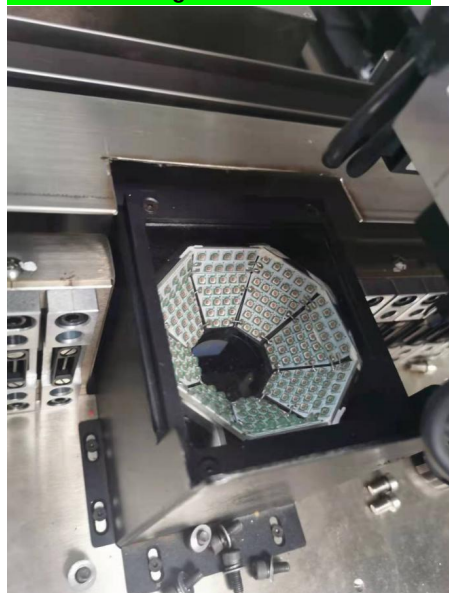
- 1.With the rapid development of the LED industry, the automation equipment products, quality requirements are higher.
- 2.ETON automation launched HT-E8S automatic multi-functional pick and place machine, 3.HT-E8S placement machine imported from Japan precision screw + linear guide rail + servo motor+linear motor.
- 3.equipped with MARK point positioning vision + device recognition function.
- 4.The pursuit of high-speed completion of the mounting, while fully ensuring the stability of high-speed operation of the equipment, is a cost-effective LED multi-functional placement machine.

E8S pick and place machine spare part

12 heads, and 32 feeder station



Vision for the flight identification Camera



Details of E8S pick and place machine

HT-E8S		
PCB	PCB length width	Max:1200*300mm min:100*100mm
	PCB thickness	0.5~5mm
O.S.	system	Windows 7
	software	R&D independently
	No.of camera	2sets of imported camera Vision for the alignment identification,mark correction
	Mounting precision	0.02mm(repeat precision)

Vision system	Mounting height	<36mm
	Mounting speed	40000CPH
	Components space	0.2mm
	No.of feeders station	30PCS
	No.of nozzles	8PCS
	Power	380AC 50HZ
	Power consumption	4KW
	Electrical control	Independent research and development by ETON
	Motion control card module 1set	Independent research and development by ETON
	X,Y,X axis drive way	Servo motor control for X,Y,Z axis
	Feeding way	Electric feeder with double motor

HT-E8S-1200/600

单模组磁悬浮多功能高速贴片机

Single module magnetic linear motor multifunctional pick and place machine



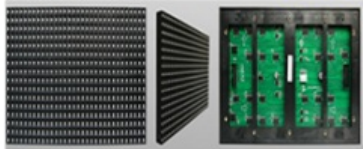
SMT Line solution & Application



SMT MACHINE MANUFACTURER



Machine for all products



LED Display



Downlight



Flexible Strip



DOB Bulb



LED Bulb



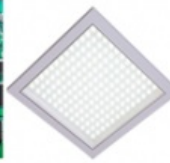
Street Light



LED Lens



Driver



Panel



Tube



Solar lamp

Contact Joy Yao :+8613590151025

After sale service

- Pre-Consultation: provides professional SMT solutions for the full line.
- Factory Warranty: One-year warranty factory service.
- Installation: On-site installation and commissioning, to ensure smooth production.
- Technical Training: provides professional training from Level 1 to Level 3.
- Technical Support: provides 7 * 24 technical support.
- Software Upgrade: offers lifetime free software upgrades for all products Provide latest information about technology and equipment.



FAQ

For future cooperation, if you are also interested in SMT Line, please contact us as soon as possible. Here are some questions as examples:

1. I want to produce LED display, does your machine suitable for produce this product?

A: Yes, we could provide whole SMT Line for LED display manufacturing, include stencil printer machine, pick and place machine, reflow oven machine, conveyor machine, etc

2. We do not have any experience for machine operation, is it difficult for operating?

A: Our machine is very easy! friendly man-machine interface, simple and easy to learn, operator can control machine within a few days of training.

3. I am from India, can I pay in Indian rupees?

A: So sorry, this order only support pay by USD or CNY. And we also support pay by Alibaba directly.

Contact

Mobile: +86 13824337025

Whatsapp: +86 13824337025

Fax: +86 0755 29502066

Skype: live:.cid.d2d6dadf9357778a

wechat: 13824337025

E-mail: ethel@eton-mounter.com



Shenzhen Eton Automation Equipment Co., Ltd.

☎ 0086 13670197725 (Whatsapp/Wechat)

✉ linda@eton-mounter.com

🌐 smtmountingmachine.com

HENGFENG INDUSTRIAL AREA, ZHOUSHI ROAD NO. 739, HEZHOU COMMUNITY, HANGCHENG STREET, BAOAN, SHENZHEN, CHINA